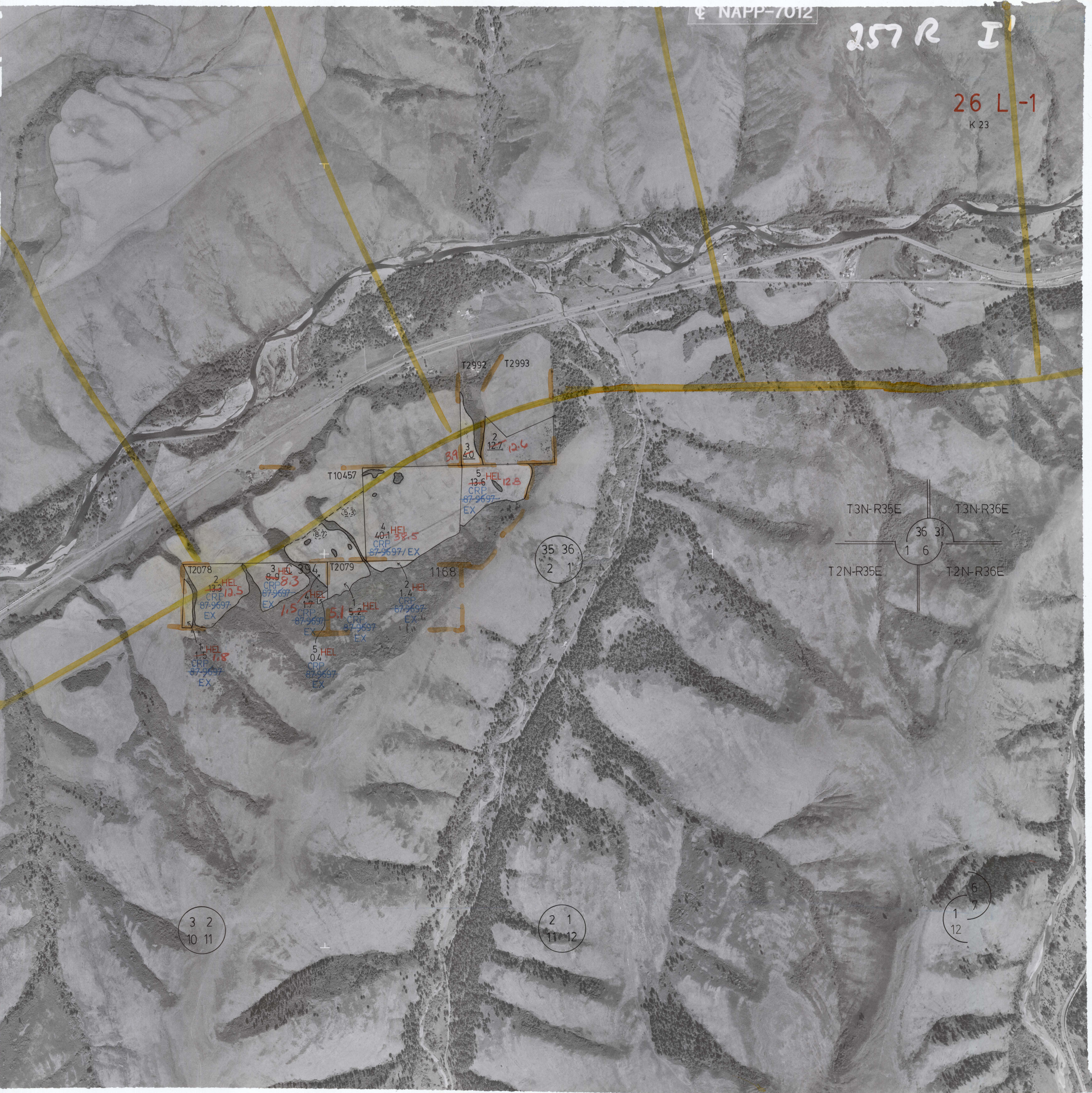


257 R I'

26 L -1
K 23



T2992 T2993

39 40 127 126

T10457

5 HEL 12.8
13.6
CRP
87-9697
EX

4 HEL 38.5
40.1
CRP
87-9697/EX

35 36
2 1

T2078

T2079

1168

2 HEL 13.3
13.3
CRP
87-9697
EX

3 HEL 8.9
8.9
CRP
87-9697
EX

4 HEL 17
17
CRP
87-9697
EX

5 HEL 5.2
5.2
CRP
87-9697
EX

1 HEL 1.5
1.5
CRP
87-9697
EX

5 HEL 0.4
0.4
CRP
87-9697
EX



3 2
10 11

2 1
11 12

6
7
1
12