

10R 6

201-2

H 18

NH-NHEL

27 26
34 35

26 25
35 36

25 30
36 31

T10986

T1161 T1160

T68

(63) (400)

(31.9)

1 NHEL
83.1
83.6

(50.1) (17.4)

(6.9)

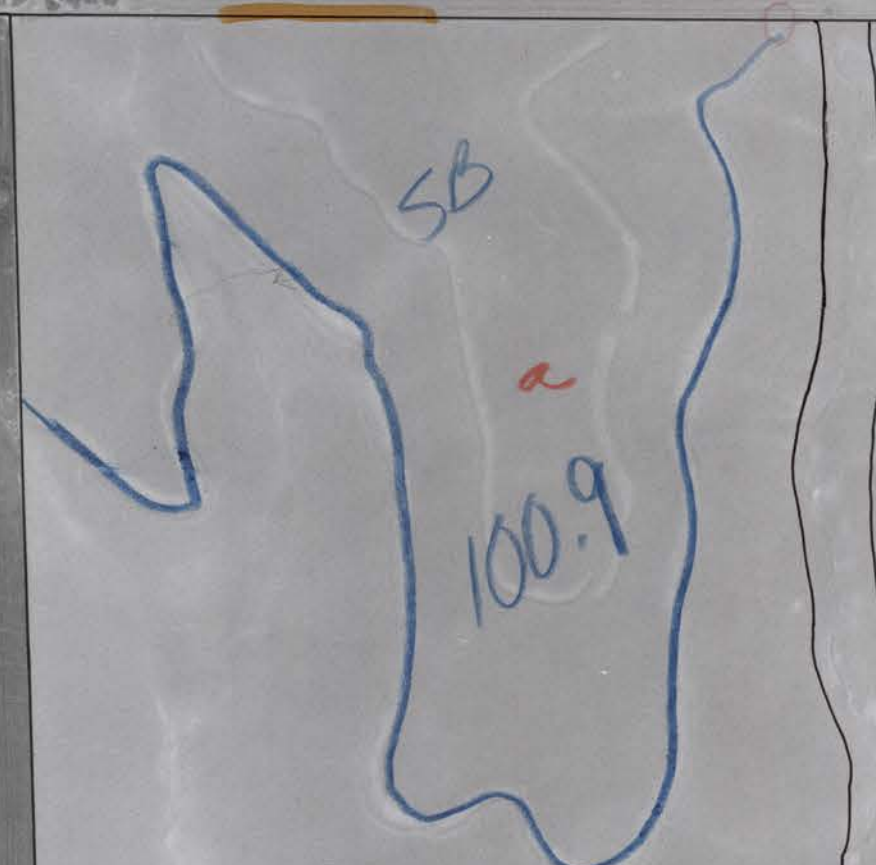
2 NHEL
83.2
82.6

(1.2)

81.87
1 NHEL
82.6
NW

(12)

83.01
1 NH
81.8
NW



T21

T10987

T298

T68

(6.6)

34 35
3 2

T49

1 NHEL
158.2

T1162

(3.4)

2 NHEL
80.1
NW

(26.6)

1 NH
33.2

T2267

(14.1)

2 NH
32.3
82.6

T2281

(26.2)

1 NHEL
89.2

(12.7)

3 NHEL
95.4

T2281

(50.9)

1 NHEL
164.0

T2281

(3.1)

2 NHEL
74

T2281

(9.0)

3 NHEL
95.4

T2281

T4N-R33E

(3.1)

2 NHEL
373.0

T2281

(26.2)

5
50.9

T2281

(12.7)

2 NHEL
55.1
NW

T2281

(50.9)

1 NHEL
100.0
NW

T2281

(3.1)

3 NHEL
215
22.0

T2281

(9.0)

1 NHEL
101.1

T2281

(22.2)

1 NHEL
158.2

T2281

(29.6)

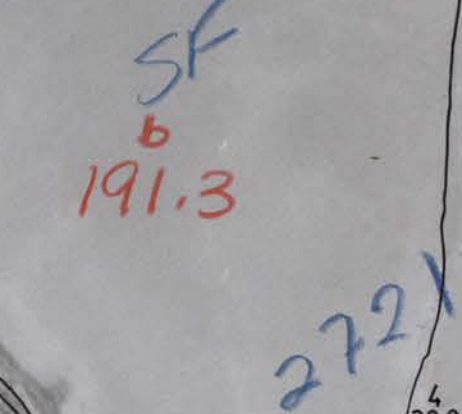
2 NHEL
78.0

T2281

(25)

1 NHEL
79.0

T2281



2721

29.9
CCRIP
2002 2012

80.9 18.1

74.5

15

(766)

(740)