

13 R

20 E

E 18

22 23

27 26

T1206

23 24

26 25

T1211

24 19

25 30

1 NHEL
141.4 140.76

2 NHEL
178.1 73.52

1 NHEL
155.9 NW 4.6

5 NHEL
168.9 158.07

T10002

T1144

T2345

6 NHEL 104.78
153.9

8 NHEL
48.57
51.6

27 26

34 35

1 NHEL
180.0
180.5

1 NHEL
166.4
164.86

26 25

35 36

1 NHEL
164.4
163.3

T2344

4 NHEL
330 32.89

9 NHEL
37.8 36.21

25 30

36 31

T5N-R33E

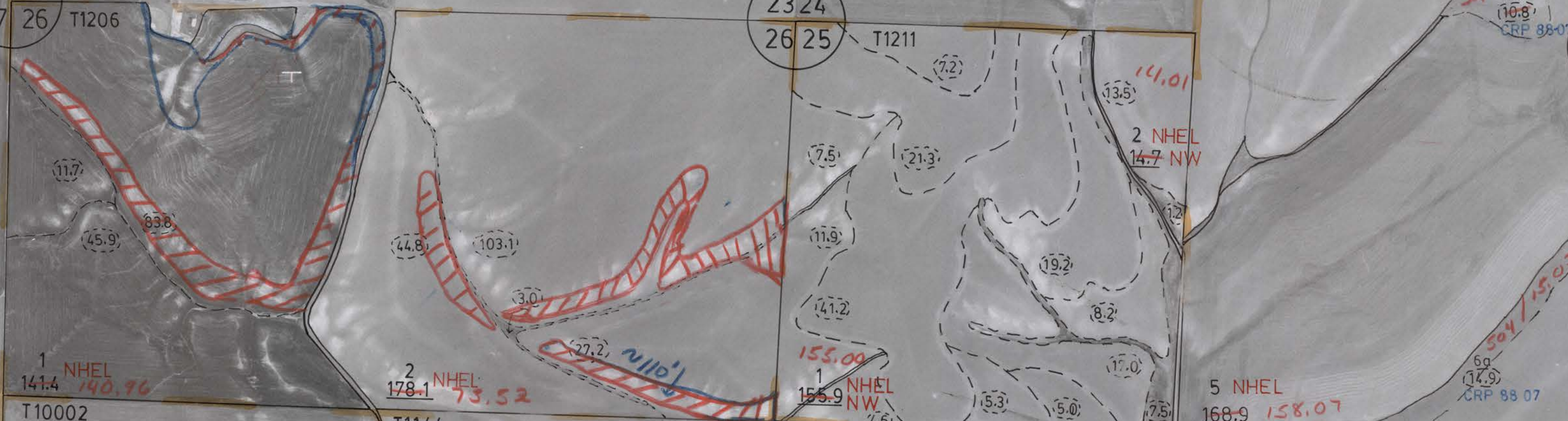
T5N-R34E

1 NHEL
115.2
115.6

T2346

1 NHEL
115.2
NW

T299



SEE MAP
21 E