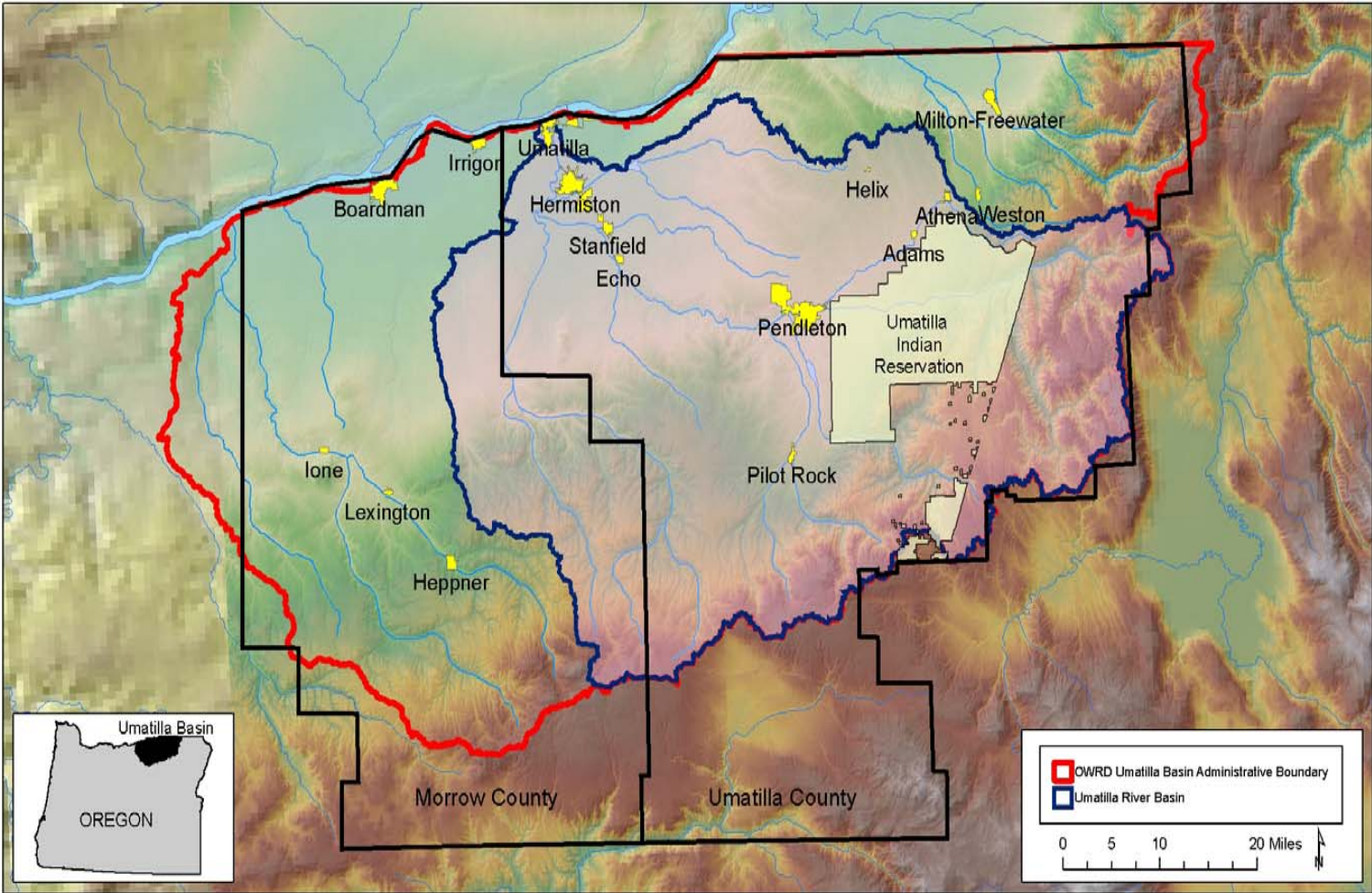


Umatilla Sub-Basin 2050 Water Management Plan

Umatilla Basin



Map developed by Confederated Tribes of the Umatilla Indian Reservation, Water Resources Program, 2005.

OGALLALA - "While in the beginning the farmer tapped groundwater only as a last resort and often applied the water when it was too late, irrigation was integrated into the farming routine most important activity to guarantee big yields." Aquifer Manjula V. Guru, et al

Miss.-Tenn. water rights case before 5th Circuit

August 2008

U.S. Water News Online

HERNANDO, Miss. — The state of Mississippi hopes to win a federal appeals court to reinstate its lawsuit against the city of Memphis, Tennessee, is **stealing Mississippi's water from a major groundwater aquifer.**

Australian farmers trade water to survive

October 2008

U.S. Water News Online

SYDNEY, Australia — For farmer Malcolm Holm, water now is just like a new shovel or tractor — **he has to buy it.**

U.S. Water News Online

HENDERSONVILLE, N.C. — Hendersonville has imposed mandatory water restrictions because officials **didn't heed a plea last year for voluntary conservation.**

Georgia – "Drought conditions across Georgia have worsened dramatically since the beginning of August. Widespread triple-digit high temperatures and low humidity have caused soil moisture levels to plummet, and they approach record lows **and groundwater and lake levels drop sharply.**" *Georgia Faces*, August 23, 2008

Dreams Dry Up in Klamath Basin

By [Deborah Schoch](#)

[July 23, 2001 LA Times](#)

They overbooked the plane. There's only so much water, and they've given it too many times....**The defining fact about the West is aridity."**

Australia to spend \$2.9 billion to buy water from farmers

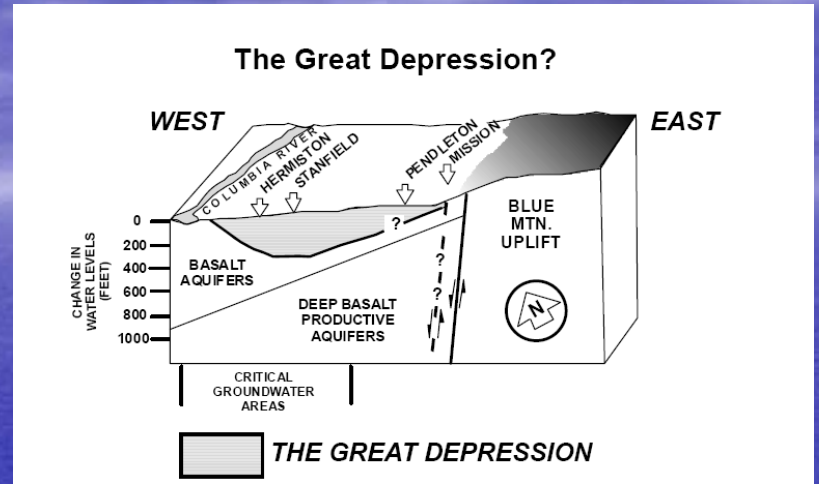
May 2008

U.S. Water News Online

Look out, Oregon, for a global warming land rush

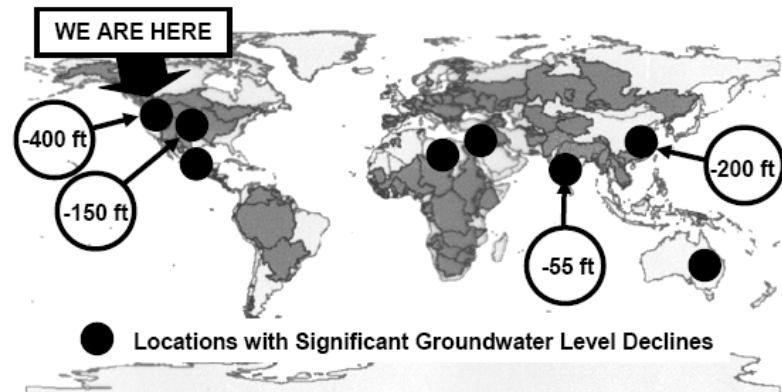


by Eric Mortenson, The Oregonian
Sunday October 05, 2008, 9:45 PM



"...Maybe it's a call to action."
[Lorna] Stickel has another way of
putting it: **"Plan, plan, plan."**

We are not alone: groundwater declines are a world problem



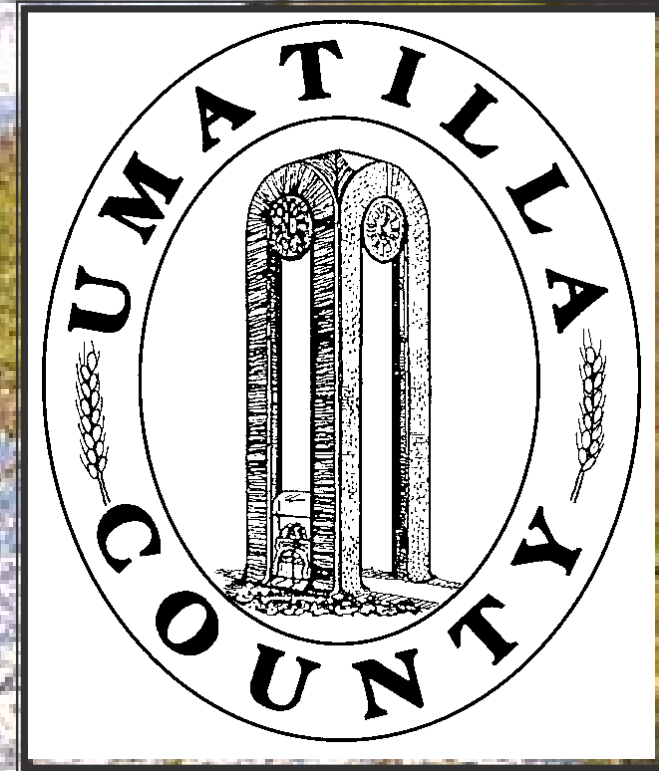
Umatilla Sub-Basin Has Options *But they are Running Out*

- Umatilla River over-appropriated (more rights than water)
- Groundwater Supplies Declining
 - 4 Designated Critical Groundwater Areas
 - Declines identified in Pendleton, Pilot Rock, Adams, Athena, etc.
 - Groundwater quality problems in lower basin
- Some Columbia River supply still remains
- Martian water is even claimed!!!
 - "Two veterans of the Great Plains water wars staked a legal claim recently to a new source of water — on Mars." *US Water News Online*

Purpose of PC Meeting

- PC recommendation required by Organizational Status
- A chance to dialogue with PC
- Additional outreach with the public
- Overview of what may lie ahead

Task Force Presentation 10-16-2008



Focus of Presentation

- Brief background of Task Force and 2050 planning process – Kent Madison
- 2050 Plan outreach – Jaime Clarke
- 2050 Plan Management Alternatives – Rick Colgan
- Linkage and opportunities with CTUIR – Bill Quaempts and/or John Barkley
- Connection with the Walla Walla Basin – John Zerba
- Exempt Wells – David Hadley
- Final thoughts – Kent Madison

WHY THE TASK FORCE

- 1855 Treaty with the Walla Walla, Cayuse and Umatilla Tribes
- 1916 Adjudicated decree of water rights to use waters of Umatilla River and its tributaries
- 1954 Pendleton Project Investigation by BoR. Concluded that potential irrigable land far exceeded available water supply
- **1958 First reports of water table decline in Butter Creek area**
- 1966 BoR reports that any significant increase in pumping from basalt aquifers would likely result in accelerated decline of water tables
- **1976 OWRD designates Butter Creek a Critical Groundwater Area (remanded until 1986)**
- **1976 Critical Groundwater Area designated by OWRD for Ordinance Basalt and Gravel**
- 1977 Lost Lake/Depot well owners initiated project to artificially recharge shallow gravel aquifer using existing canal system
- 1983 Umatilla County Comprehensive Plan recognizes that availability of water is a key resource for economic growth
- **1986 Critical Groundwater Area designated by OWRD for Buttercreek Basalt**
- 1988 Umatilla Basin Project authorized and funded by Congress -- allows irrigators to exchange Umatilla River water for Columbia River water)
- 1990 ODEQ declares 352,000 acres in Umatilla and Morrow counties as a groundwater management area (GWMA) due to nitrate contamination
- **1991 Critical Groundwater Area designated by OWRD for Stage Gulch Basalt**
- 2004 Umatilla County Critical Groundwater Task Force created by Board of Commissioners to address water limitations
- 2005 Board of Commissioners of Umatilla County adopt Exempt Well Resolution until 2050 plan is authorized

Umatilla Area Representatives:

Larry Chucas
Sam Nobles
Kim Puzey
Lyle Smith

Hermiston Area Representatives:

Rick Colgan
David Hadley
Tyler S. Hansell
Jim Klukkert
Ray Kopacz
Chuck Miller

Echo Area Representative:

Kent Madison - Chairperson

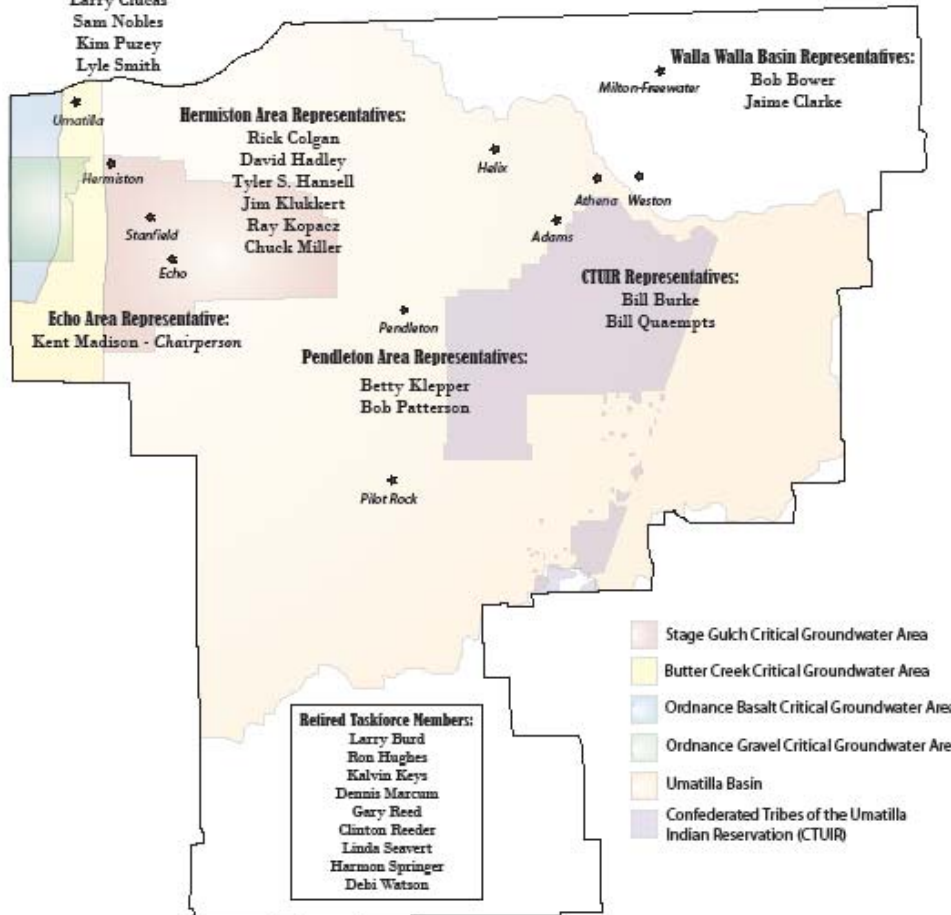
Pendleton Area Representatives:

Betty Klepper
Bob Patterson

Walla Walla Basin Representatives:

Bob Bower
Jaime Clarke

Milton-Freewater



- Stage Gulch Critical Groundwater Area
- Butter Creek Critical Groundwater Area
- Ordinance Basalt Critical Groundwater Area
- Ordinance Gravel Critical Groundwater Area
- Umatilla Basin
- Confederated Tribes of the Umatilla Indian Reservation (CTUIR)

Retired Taskforce Members:
Larry Burd
Ron Hughes
Kalvin Keys
Dennis Marcum
Gary Reed
Clinton Reeder
Linda Seavert
Harmon Springer
Debi Watson

TASK FORCE MISSION

“Identify and implement technically and economically feasible measures to enhance and protect groundwater quantity and quality, as an essential natural resource necessary to assure continued economic development in Umatilla County, especially in designated Critical Groundwater Areas.”

Task Force Objectives

1. Review and evaluate previous studies, plans and actions taken
2. Gather, organize and analyze available information
3. Inventory anticipated needs through 2050
4. Develop a consensus for a sustainable plan, that is technically and economically feasible, to protect and enhance groundwater quantity, as an essential natural resource
5. Coordinate with entities working simultaneously on plans to protect groundwater quality (e.g., LUBGWMA Committee)
6. Develop lines of communication and coordination to reduce obstacles and broaden the base of support
7. The Task Force may develop and advance such other consensus objectives as it determines
8. Identify and promote development of projects with known beneficial use (Added to Charter in 2005)

Develop a consensus for a sustainable plan, that is technically and economically feasible, to protect and enhance groundwater quantity, as an essential natural resource

- Technically Feasible

- Plan addresses the projects that the Task Force believes are technically feasible

- Economically Feasible

- The conclusions of the Task Force are based on economics (e.g. why do we need to protect our groundwater supplies)

- Politically Feasible ?

Continuing On!!!

Projects Team

- Kent Madison
- Jim Klukkert
- Bob Bower

Outreach Team

- Jaime Clarke
- Betty Klepper
- Lyle Smith
- Sam Nobles

Bridge Group

- Dennis Doherty
- Rick Colgan
- Bill Quaempts
- Bill Burke
- John Zerba
- Bob Patterson
- Ray Kopacz
- Chuck Miller