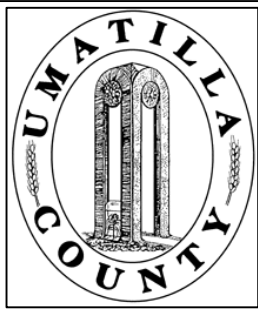


This map was prepared for Assessment purposes only.



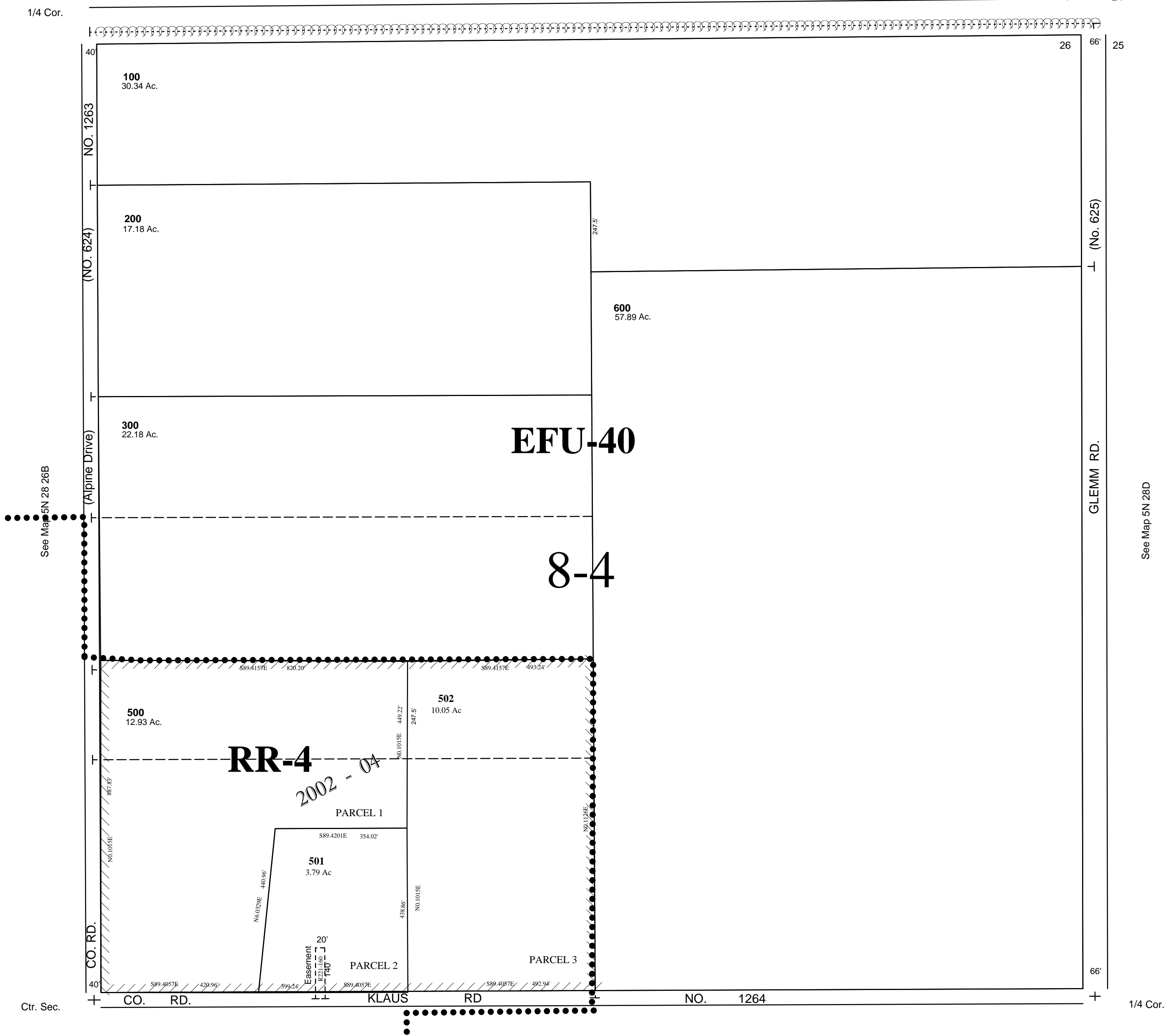
NE 1/4 SEC 26 T 5N R 28 E WM  
UMATILLA COUNTY, OR  
SCALE: 1"200'

9/24/03

5N2826A  
AERIAL PHOTO NO. 1P-103

See Map 5N 28D

1/4 Cor.



CANCELLED NOS.  
400

See Map 5N 28D

5N2826A