

This map was prepared for assessment purposes

4/6/06

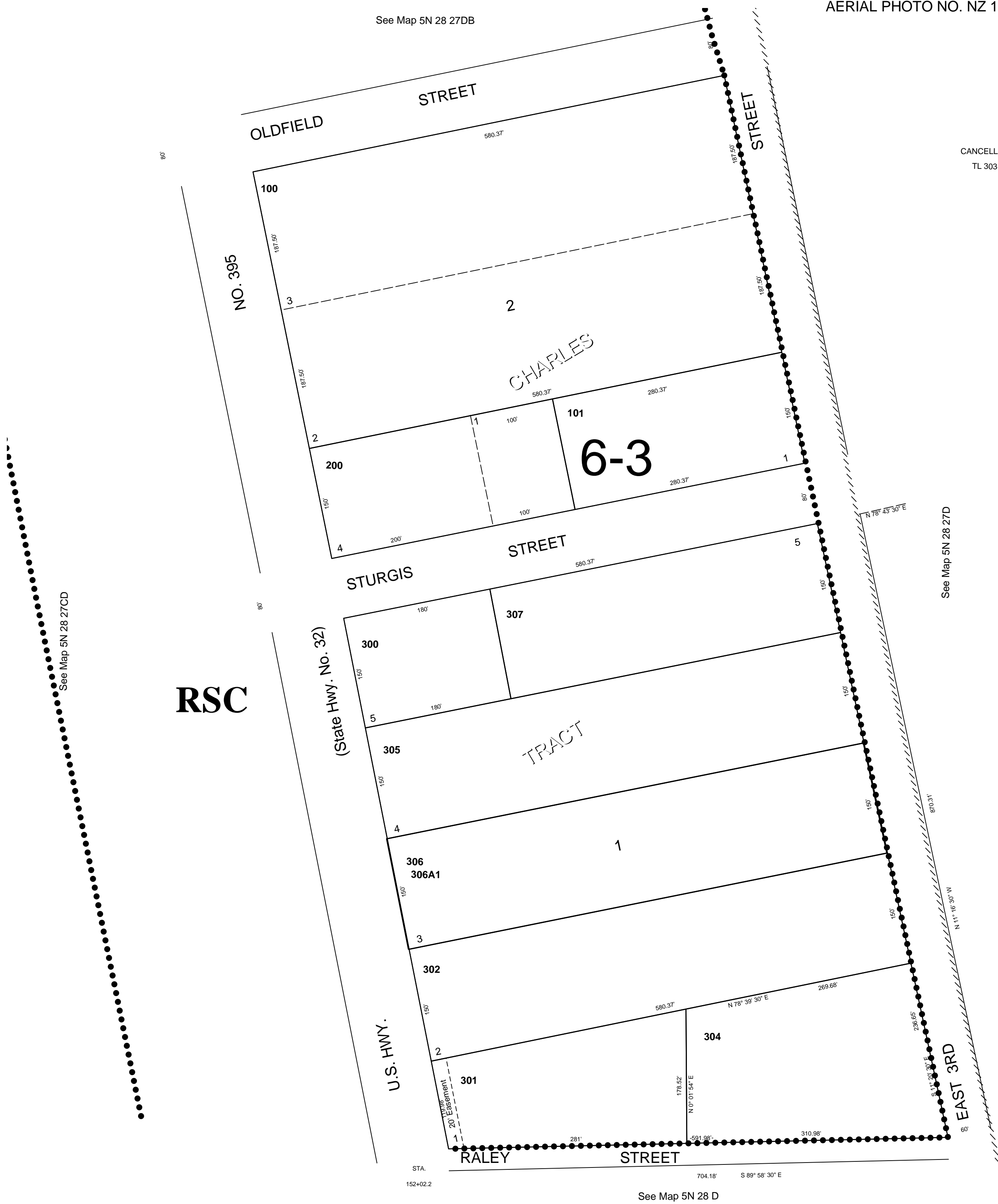
5N 28 27DC
AERIAL PHOTO NO. NZ 1P-104

See Map 5N 28 27DB

SW1/4 SE1/4 SEC 27
T5N R28E WM
UMATILLA COUNTY

SCALE 1"=100'

CANCELLED
TL 303



5N 28 27DC