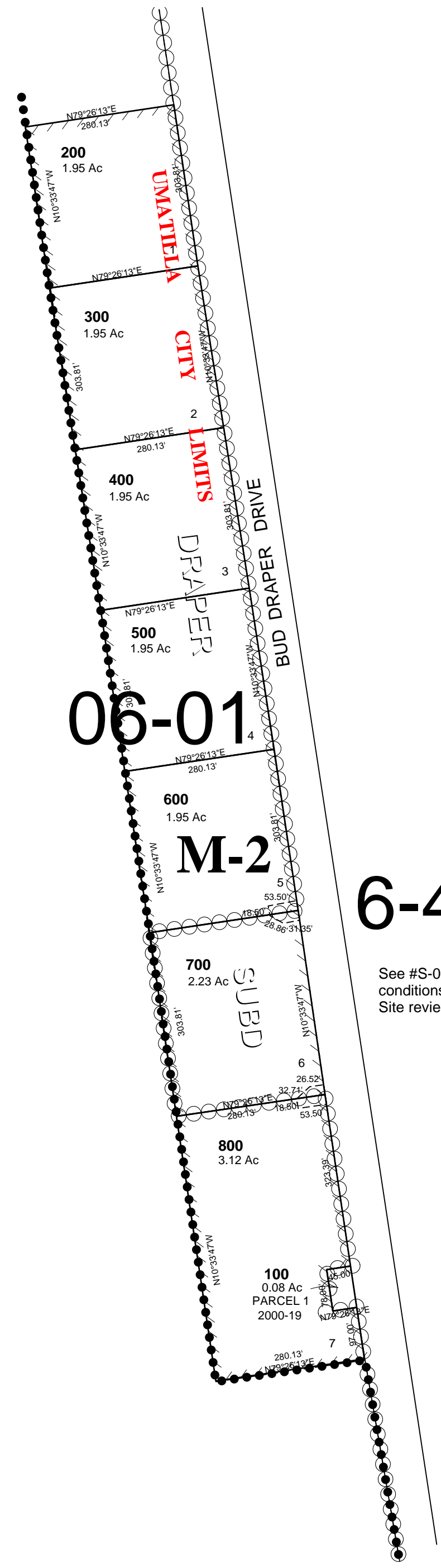
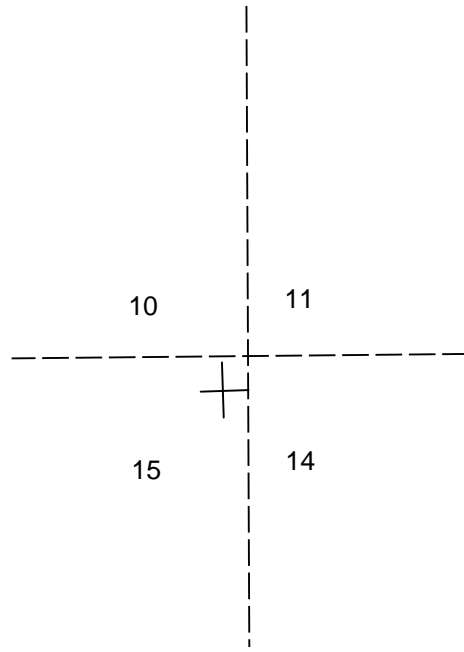


This map was prepared for Assessment & Taxation purposes only and was NOT prepared nor is it suitable for legal, engineering or surveying purposes.

NW1/4 SEC 14 T5N R28E WM  
UMATILLA COUNTY  
SCALE 1"=200'

5N 28 14B  
Aerial Photo No. NZ 1P-58-60  
102-103



6-4  
See #S-051-06 for conditions on subdivision Site review, shared access

Revised: 8/7/09  
5N 28 14B