

This map was prepared for assessment purposes

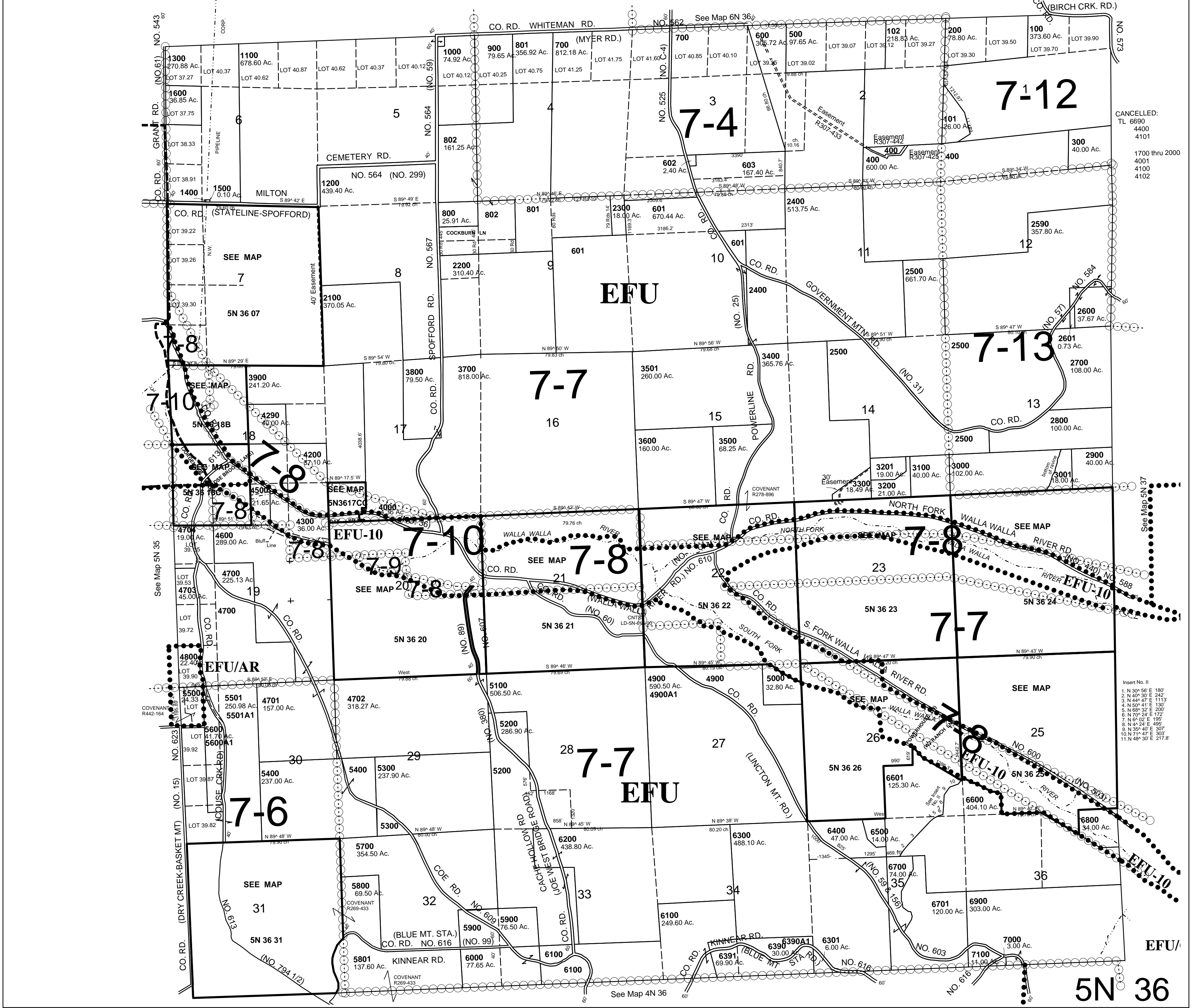
1"=2000'

T5N R36E WM UMATILLA COUNTY

3/23/05

5N 36

AERIAL PHOTO NO. 5P 12-16, 6P 120-123, 11P 51-53



CANCELLED:
TL 6890
4400
4101
1700 thru 2000
4001
4100
4102

Insert No. II
1. N 30° 56' E 190'
2. N 89° 35' E 342'
3. N 44° 47' E 113'
4. N 89° 35' E 200'
5. N 89° 35' E 137'
6. N 89° 35' E 172'
7. N 64° 02' E 195'
8. N 89° 35' E 485'
9. N 35° 47' E 307'
10. N 71° 47' E 303'
11. N 48° 30' E 217.8'

5N 36