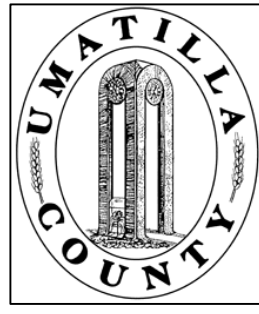


This map was prepared for Assessment purposes only.



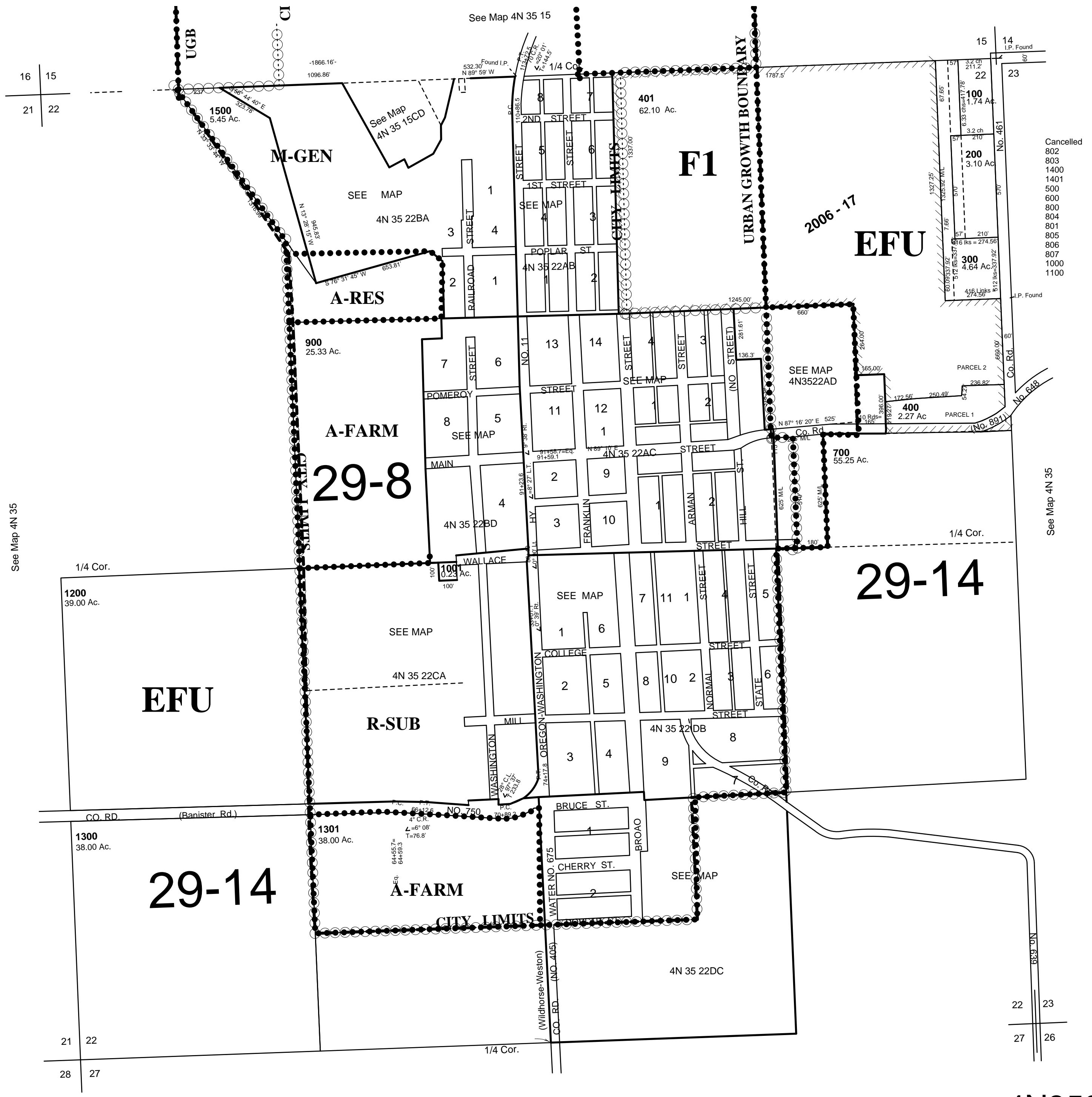
SEC 22 T4N R35E WM UMATILLA COUNTY, OR

12/01/04

4N3522

Weston City and UGA

SCALE: 1" = 400'



- Cancelled
- 802
- 803
- 1400
- 1401
- 500
- 600
- 800
- 804
- 801
- 805
- 806
- 807
- 1000
- 1100

4N3522