

This map was prepared for Assessment and Taxation purposes only and has NOT been prepared for legal, engineering or surveying purposes.

SE1/4 SW1/4 SEC 19 T4N R35E WM  
UMATILLA COUNTY  
SCALE 1"=100'

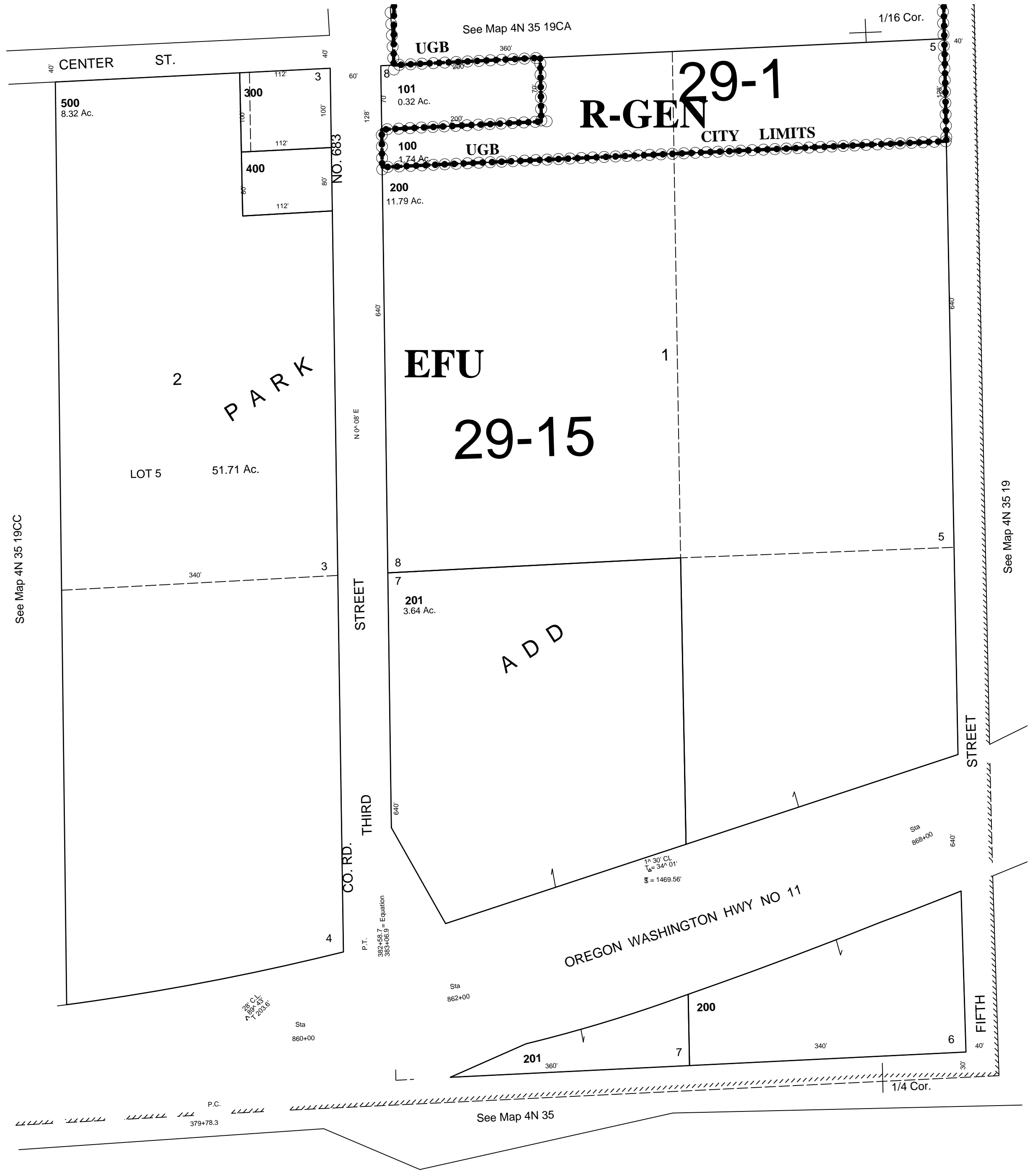
9/19/06

4N 35 19CD

AERIAL PHOTO NO. 5P-100

See FIRM for areas subject to flooding

1/16 Cor.



1/16 Cor.

4N 35 19CD