

This map was prepared for Assessment & Taxation purposes only and was NOT prepared nor is it suitable for legal, engineering or surveying purposes.

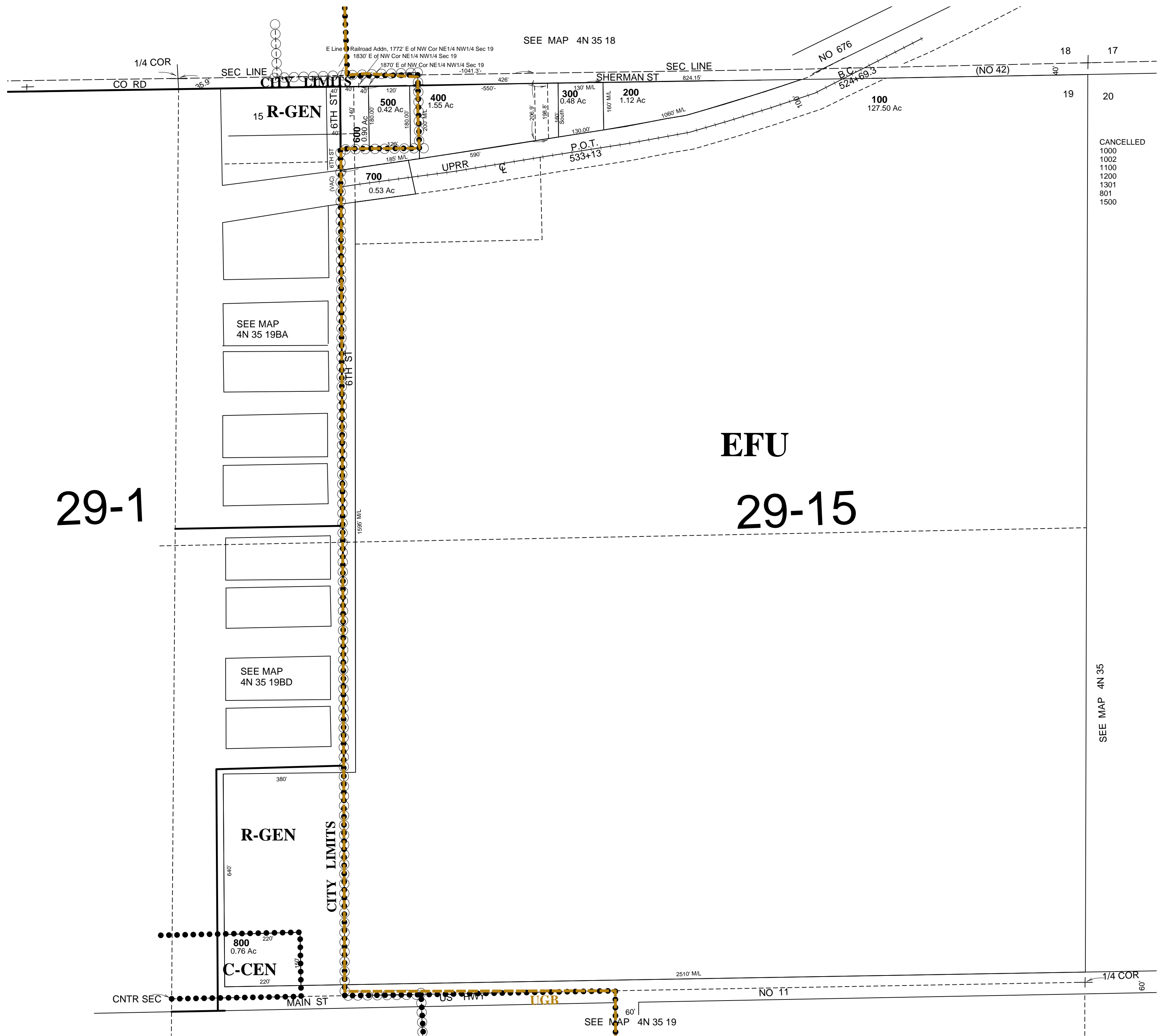
NE1/4 SEC 19 T4N R35E WM

UMATILLA COUNTY

SCALE 1" = 200'

4N 35 19A

AERIAL PHOTO NO 5P-99



CANCELLED
1000
1002
1100
1200
1301
801
1500

SEE MAP 4N 35

29-1

EFU 29-15

Revised: 9/2/10

4N 35 19A