

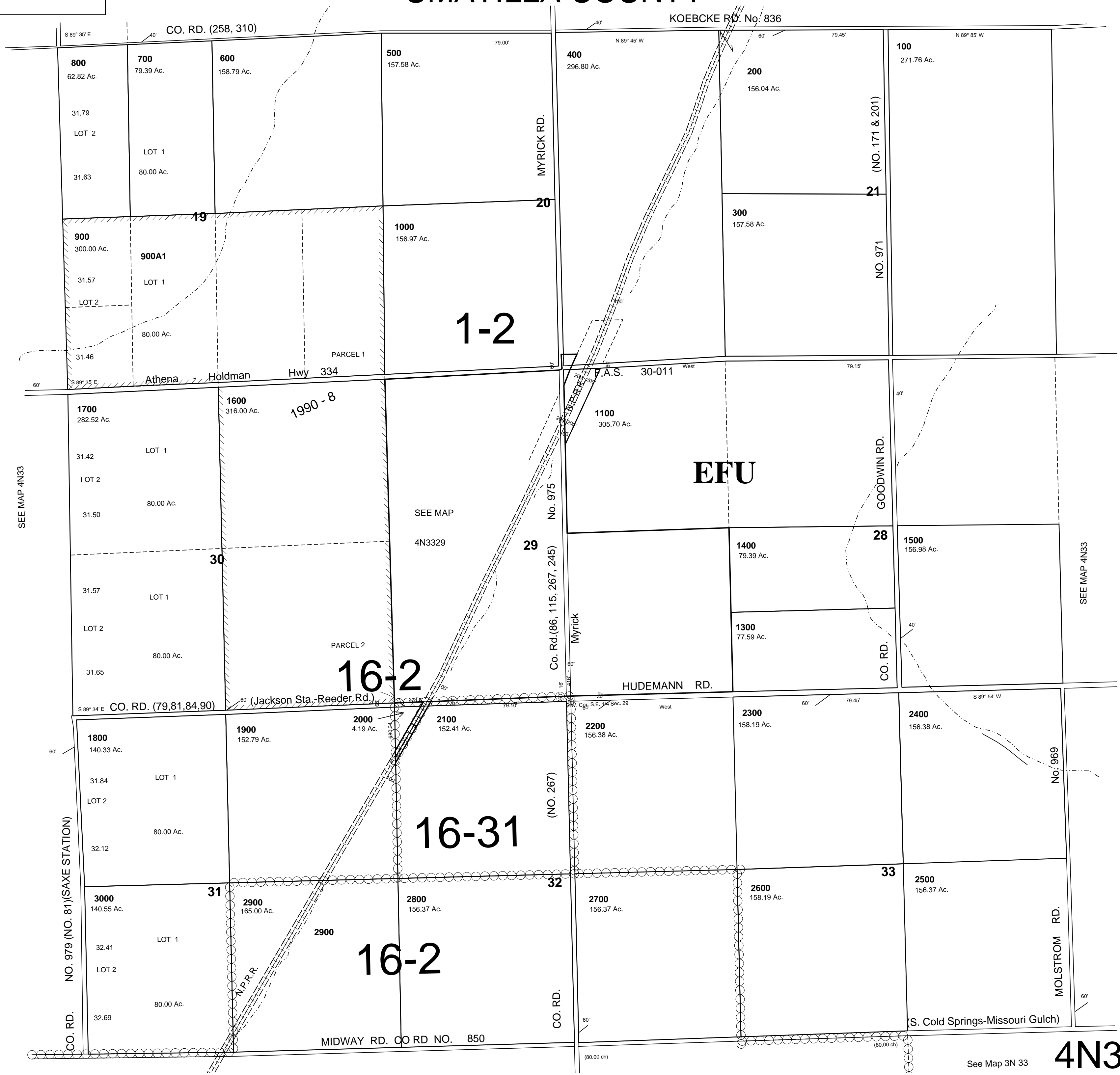
This map was prepared for assessment purposes

SW 1/4 T4N R33 E WM
UMATILLA COUNTY

11-13-06

4N33C

SCALE 1"=1000'



SEE MAP 4N33

SEE MAP 4N33

CO. RD. NO. 979 (NO. 81) (SAXE STATION)

See Map 3N 33

4N33C