

This map was prepared for Assessment purposes only.

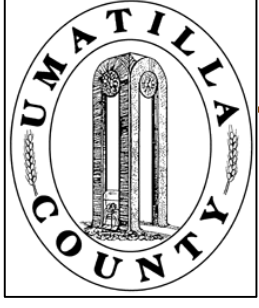
SE1/4 T4N R28E WM UMATILLA COUNTY, OR

4N 28D

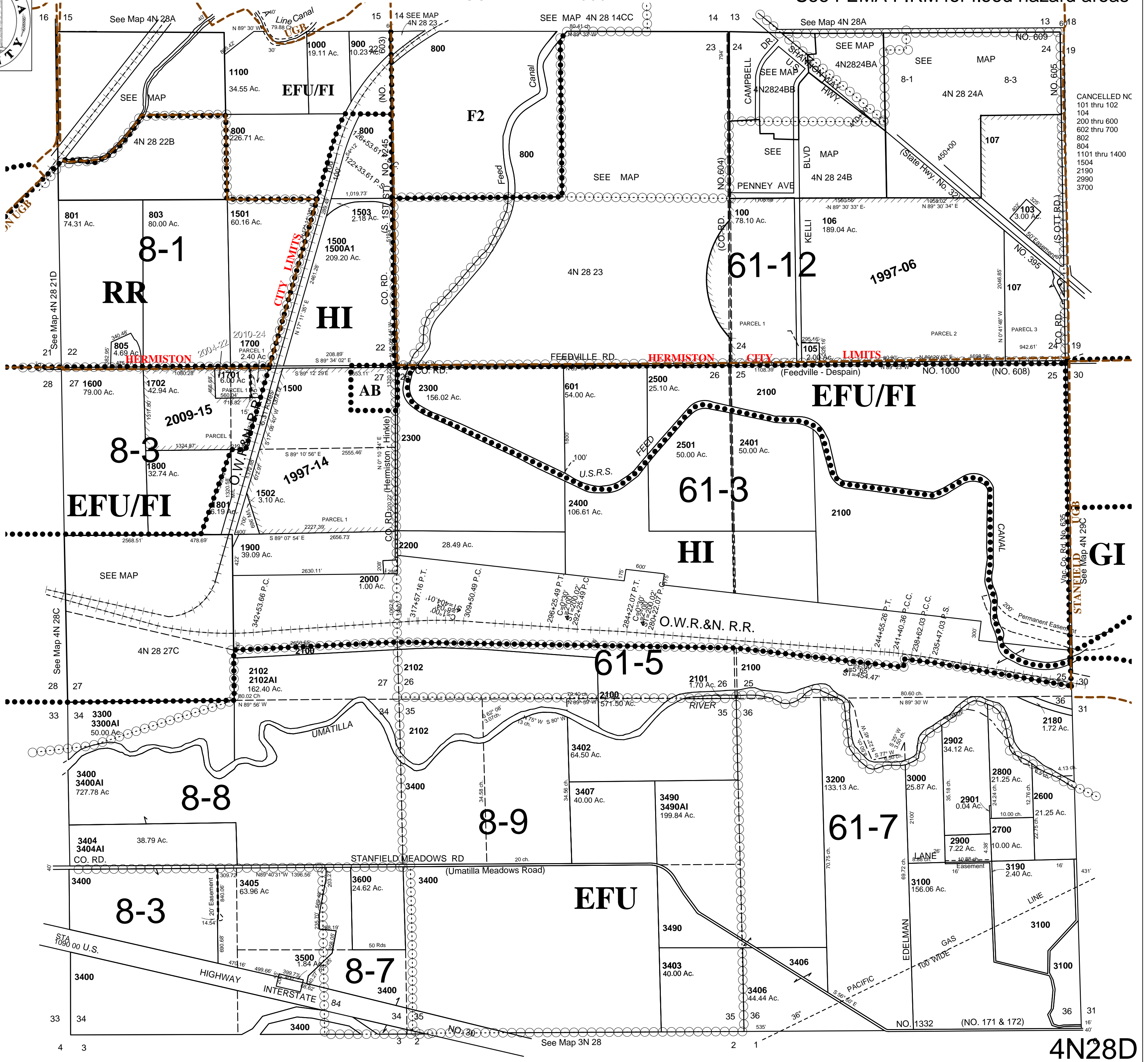
AERIAL PHOTOT NO. NZ-2P-21-24 & 41-42

Hermiston City & Urban Growth Area
See FEMA FIRM for flood hazard areas

SCALE: 1" = 1000'



All in Critical Ground Water Areas



4N28D