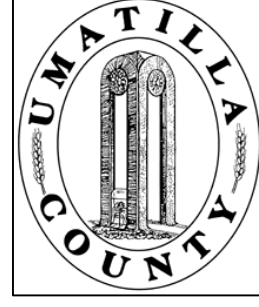


This map was prepared for Assessment & Taxation purposes only and has not been prepared or is suitable for legal, engineering or surveying purposes.



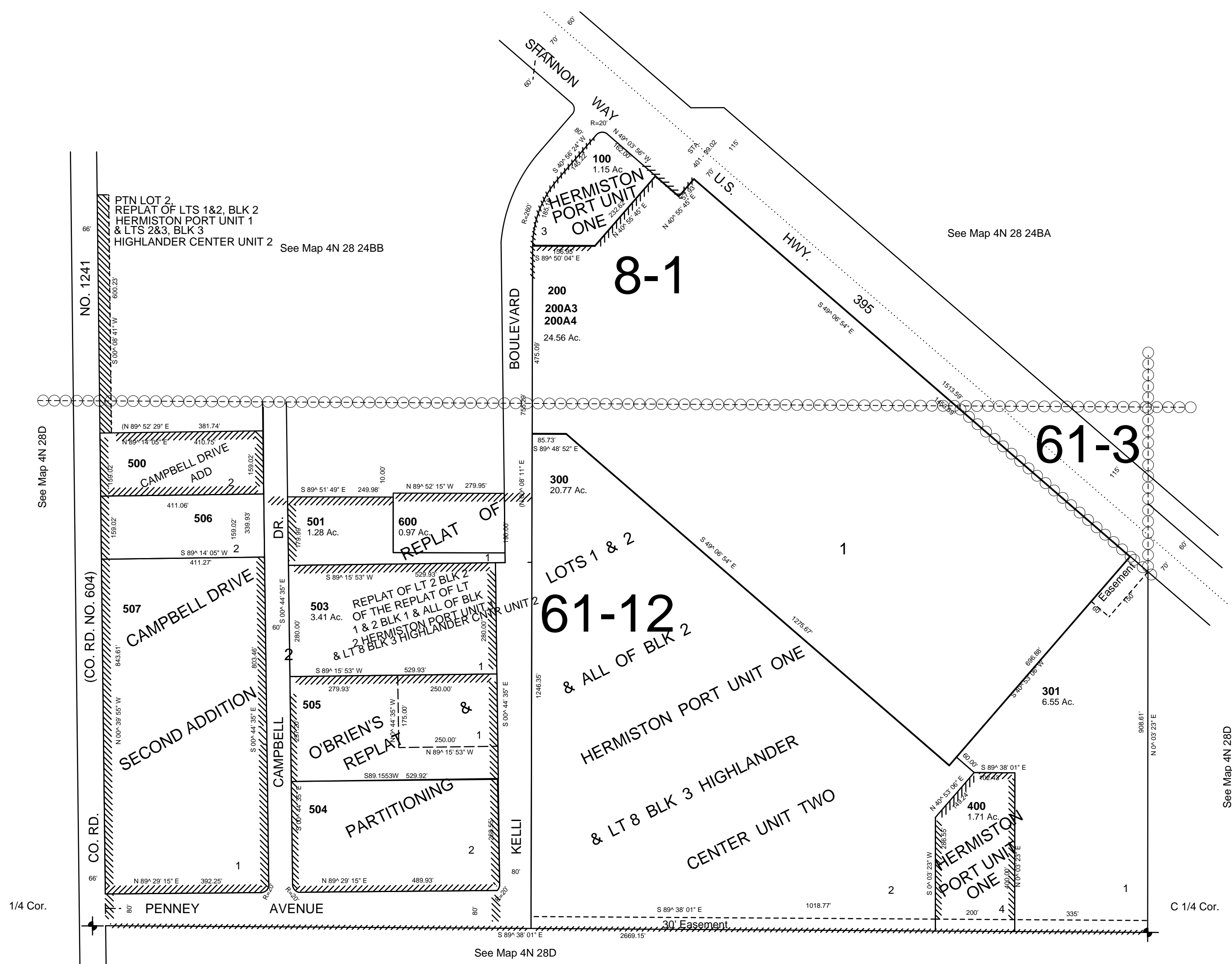
NW1/4 SEC 24 T4N R28E WM UMATILLA COUNTY, OR

SCALE: 1" = 200

1/30/07

4N 28 24B

CITY OF HERMISTON



4N 28 24B