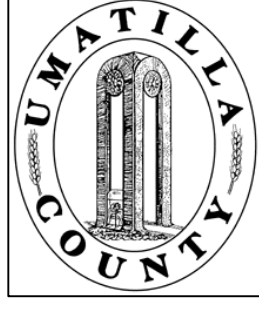


This map was prepared for Assessment purposes only.



NW1/4 SEC 22 T4N R28E WM UMATILLA COUNTY, OR

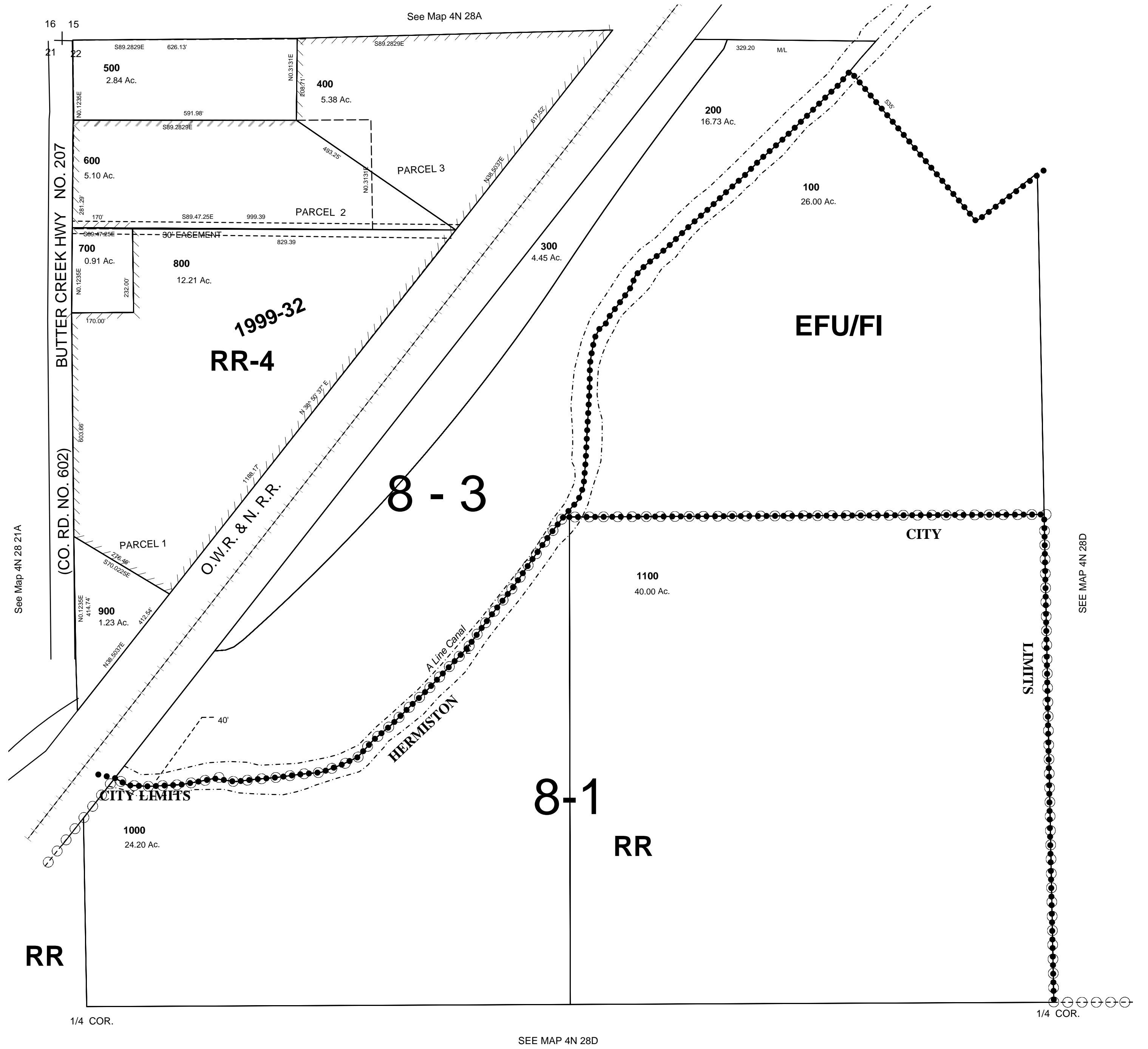
SCALE: 1" = 200

7/8/04

4N 28 22B

AERIAL PHOTO NO. NZ-2P-21-24
2P-41-42

HERMISTON CITY & URBAN GROWTH AREA ALL IN BUTTER CREEK CGWATER AREA



4N 28 22B