

This map was prepared for Assessment & Taxation purposes only and was NOT prepared, nor is it suitable for legal, engineering or surveying purposes.

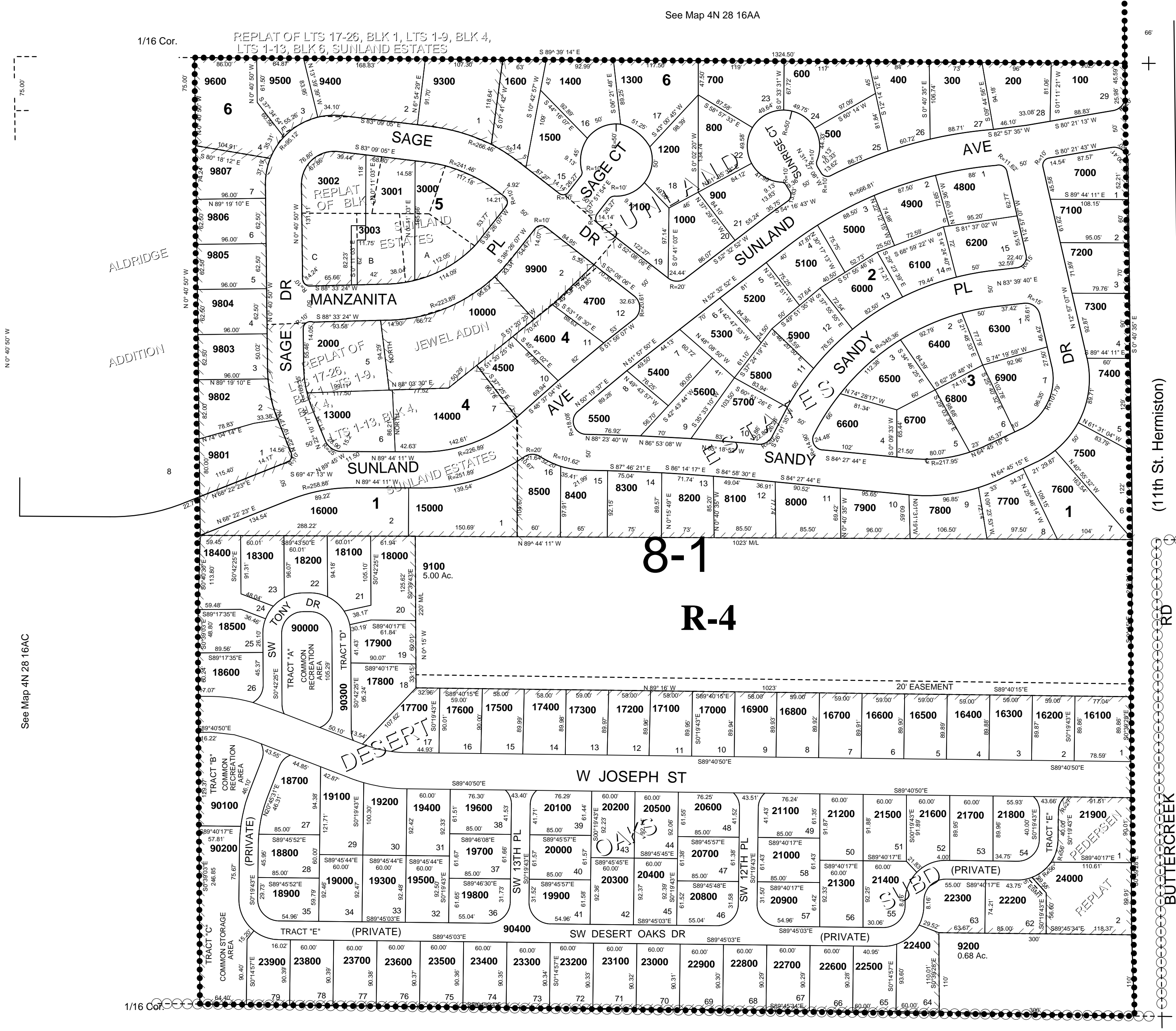
SE 1/4 NE 1/4 SEC 16 T4NR28E WM UMATILLA COUNTY

4N2816AD

AERIAL PHOTO NO NZ 2P-25
CITY OF HERMISTON

SCALE 1"=100'

See Map 4N 28 16AA



- CANCELLED
- TL 3601
 - 3100
 - 3200
 - 3300
 - 3400
 - 3500
 - 3600
 - 3700
 - 3800
 - 3900
 - 4000
 - 4100
 - 4200
 - 4300
 - 4400
 - 4500
 - 4600
 - 4700
 - 4800
 - 4900
 - 5000
 - 5100
 - 5200
 - 5300
 - 5400
 - 5500
 - 5600
 - 5700
 - 5800
 - 5900
 - 6000
 - 6100
 - 6200
 - 6300
 - 6400
 - 6500
 - 6600
 - 6700
 - 6800
 - 6900
 - 7000
 - 7100
 - 7200
 - 7300
 - 7400
 - 7500
 - 7600
 - 7700
 - 7800
 - 7900
 - 8000
 - 8100
 - 8200
 - 8300
 - 8400
 - 8500
 - 8600
 - 8700
 - 8800
 - 8900
 - 9000
 - 9100
 - 9200
 - 9300
 - 9400
 - 9500
 - 9600
 - 9700
 - 9800
 - 9900
 - 1000

See Map 4N 28 15BC

See Map 4N 28 16D

REVISED: 3/16/11

4N2816AD