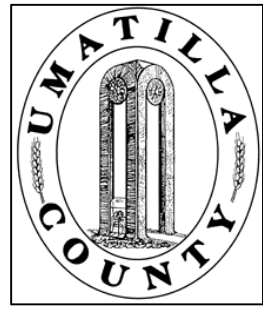


This map was prepared for Assessment purposes only.



SEC 16 T4N R28E WM UMATILLA COUNTY, OR

8/04/04

4N 28 16 CITY OF HERMISTON & UGA

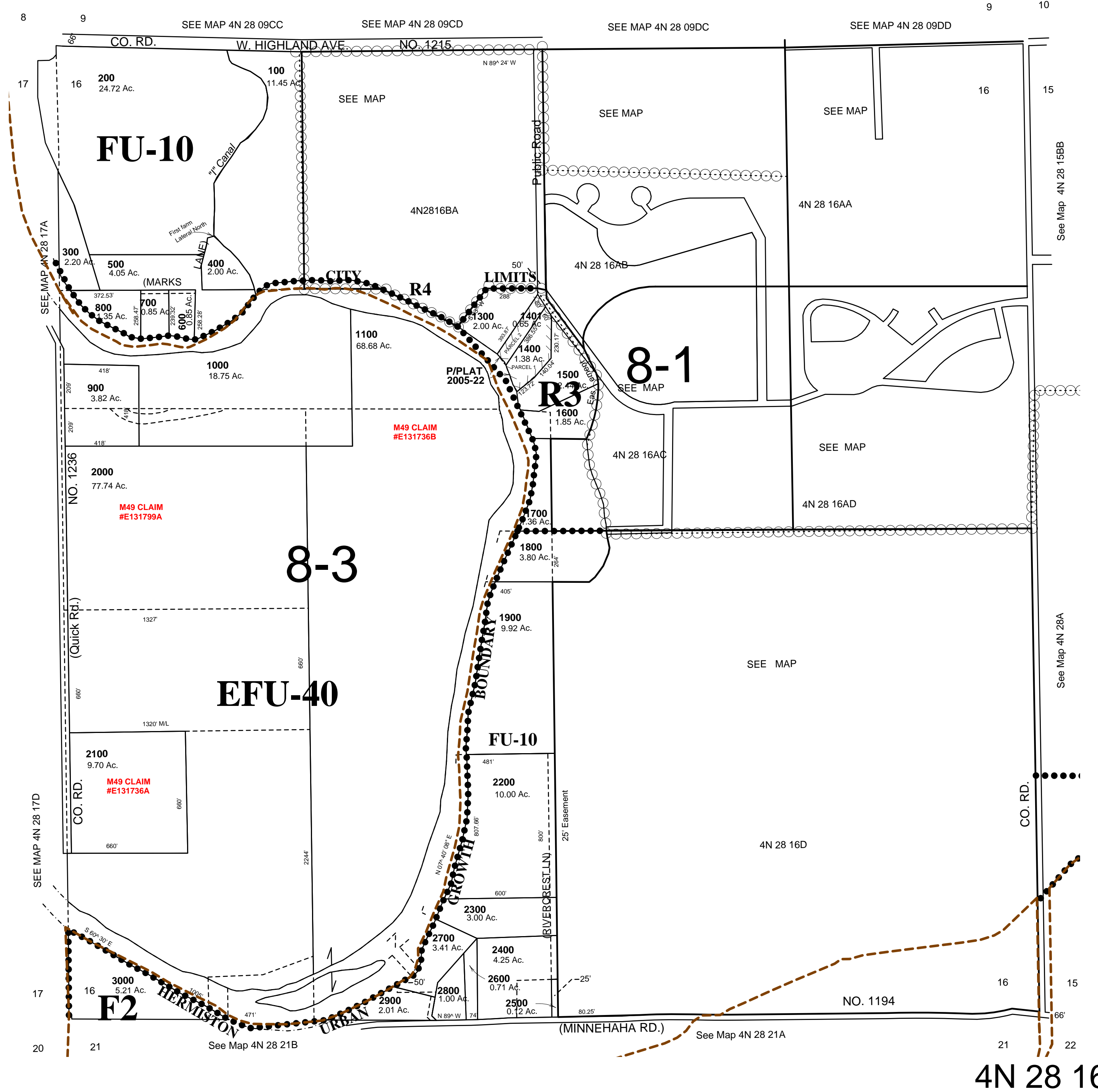
AERIAL PHOTO NO. NZ-2P-25-26

1P-119-120

All in Critical Ground Water Areas

See FEMA FIRM for areas subject to flooding

SCALE: 1" = 400'



4N 28 16