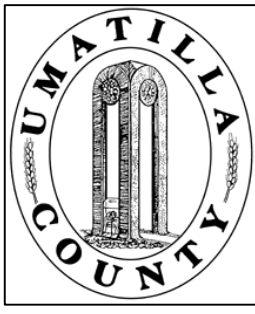


This map was prepared for Assessment purposes only.



SE 1/4 SEC 14 T4N R28E WM UMATILLA COUNTY, OR

SCALE: 1" = 200'

8/10/04

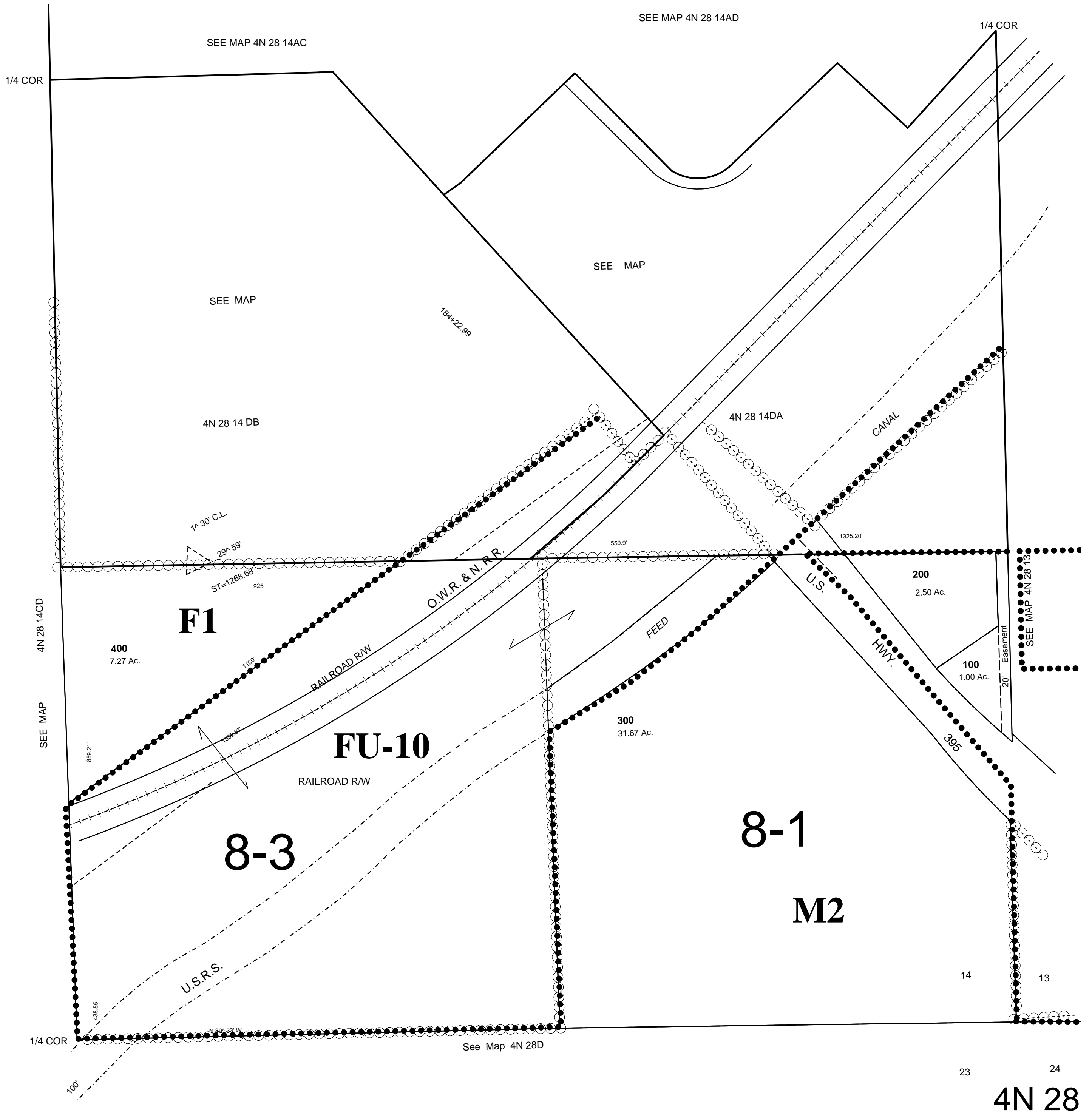
4N 28 14D

AERIAL PHOTO NO. NZ-2P 21-24
1P 121-123

Hermiston City & UGA

All in Airport Hazard Overlay Zone

All in Stage Gulch Critical Ground Water Area



4N 28 14D