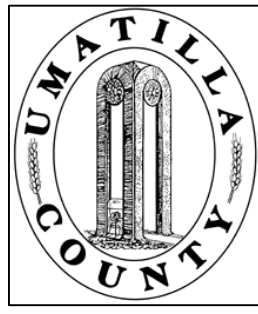


This map was prepared for Assessment purposes only.



# SEC 13 T4N R28E WM UMATILLA COUNTY, OR

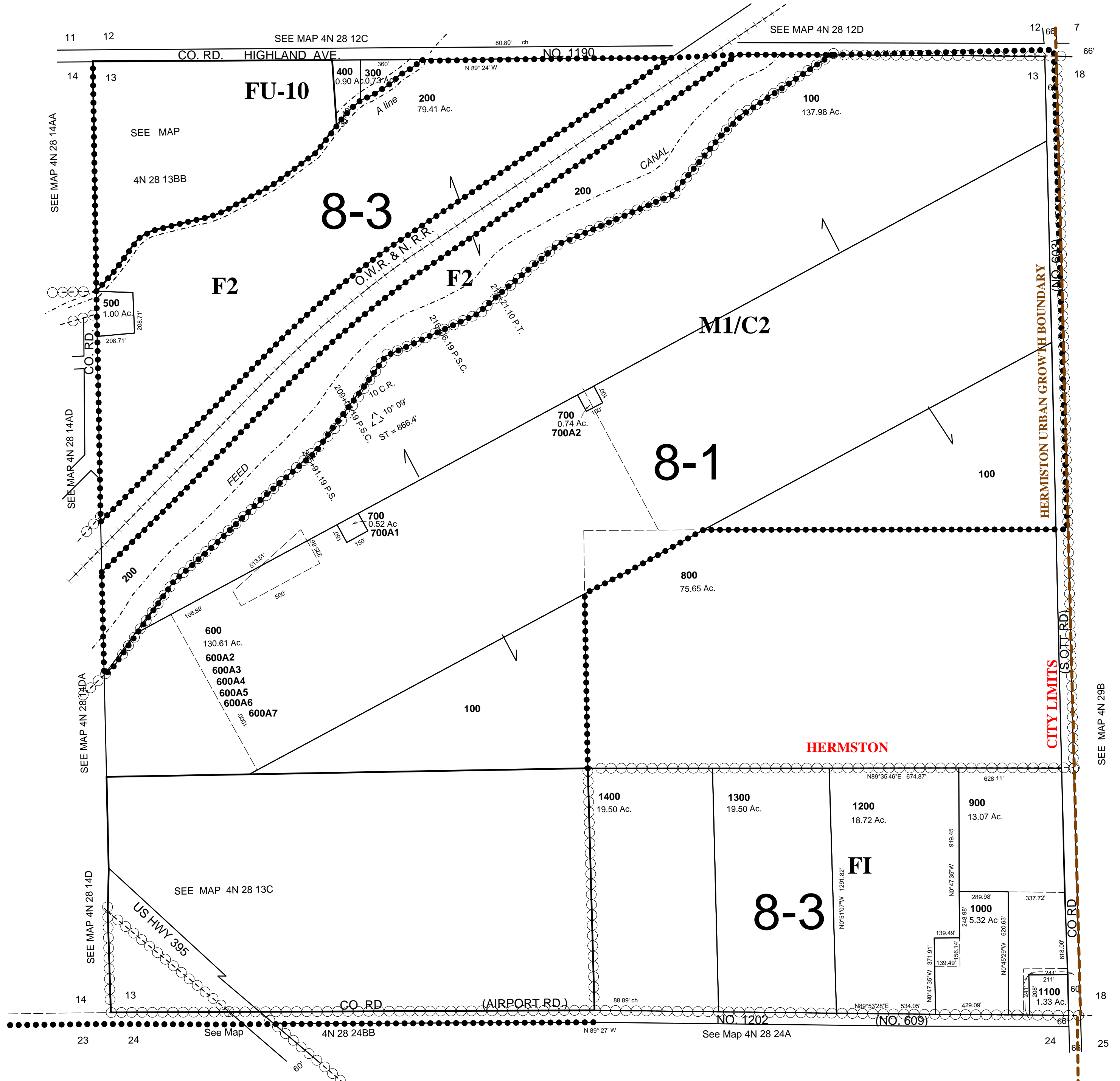
SCALE: 1" = 400'

## 4N 28 13

Hermiston City & Urban Growth Area

All in Hermiston Airport Hazard Overlay Zone

All in Stage Gulch Critical Ground Water Area



## 4N 28 13