

This map was prepared for assessment purposes

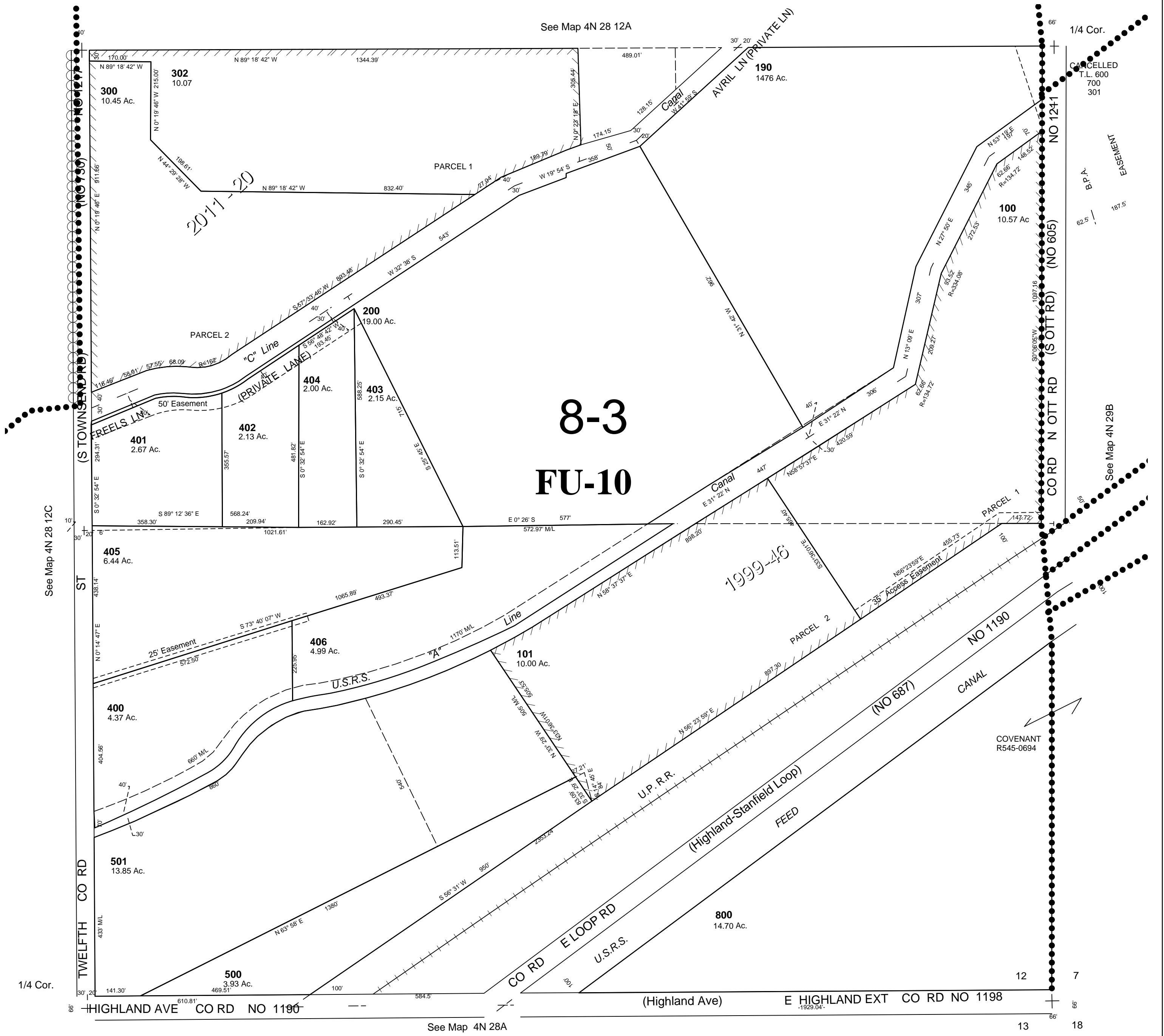
SE1/4 SEC 12 T4N R28E WM
UMATILLA COUNTY
SCALE 1"=200'

9/14/06

4N 28 12D

AERIAL PHOTO NO. 1P-123

All in Hermiston Airport Hazard Area
All in Stage Gulch Critical Ground Water Area



4N 28 12D