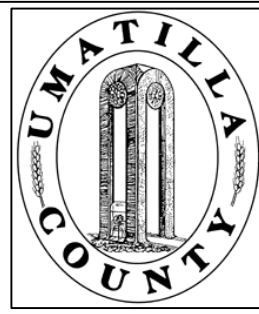


This map was prepared for Assessment purposes only.



SW1/4 SEC 12 T4N R28E WM UMATILLA COUNTY, OR

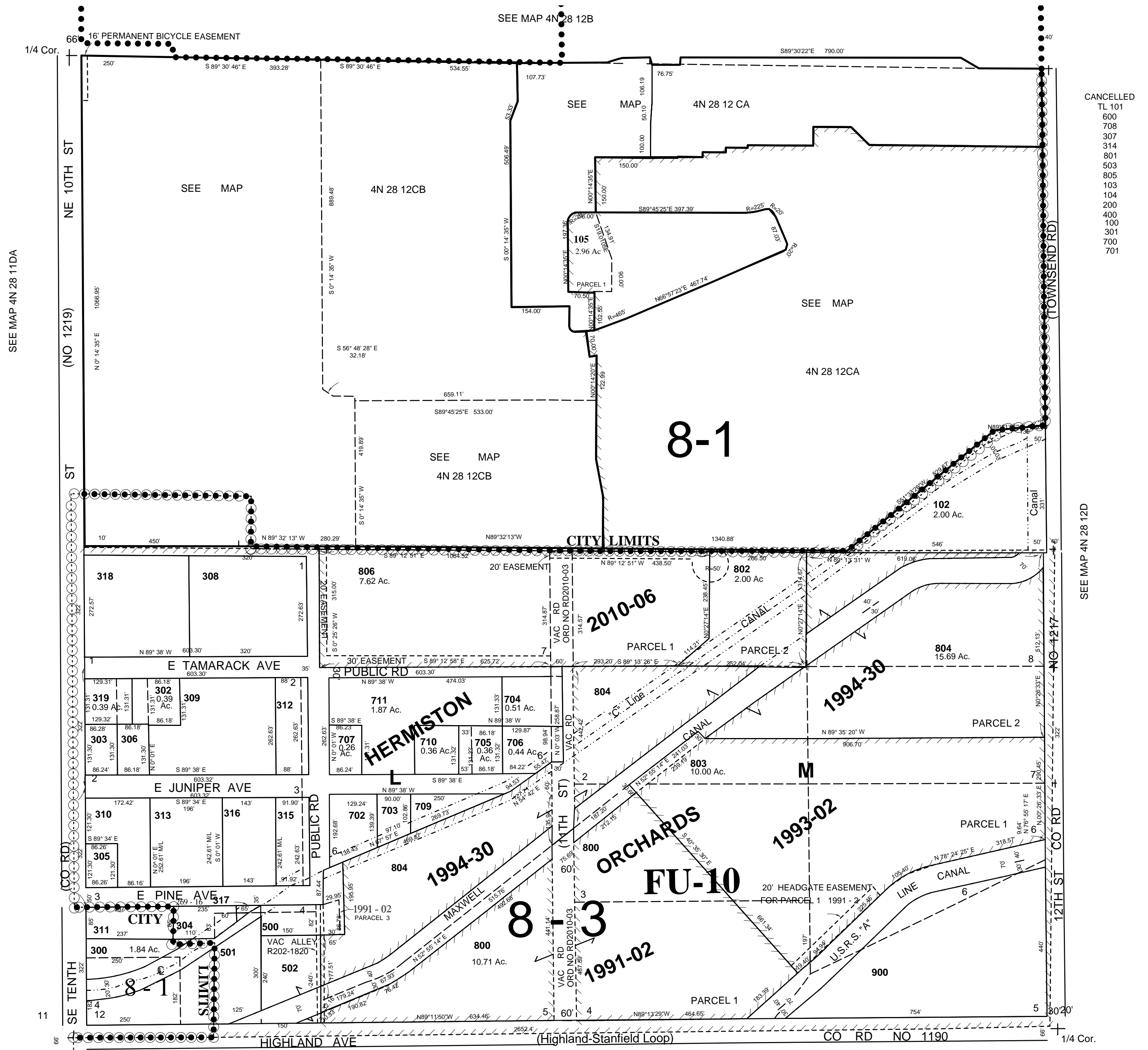
04/17/06

4N 28 12C

Hermiston City & Urban Growth Area

SCALE: 1" = 200'

All in Stage Gulch Critical Ground Water Area
All in Hermiston Airport Hazard Overlay Zone



CANCELLED
 TL 101
 600
 708
 307
 314
 801
 503
 805
 103
 104
 200
 400
 100
 301
 700
 701

4N 28 12C