

This map was prepared for assessment purposes

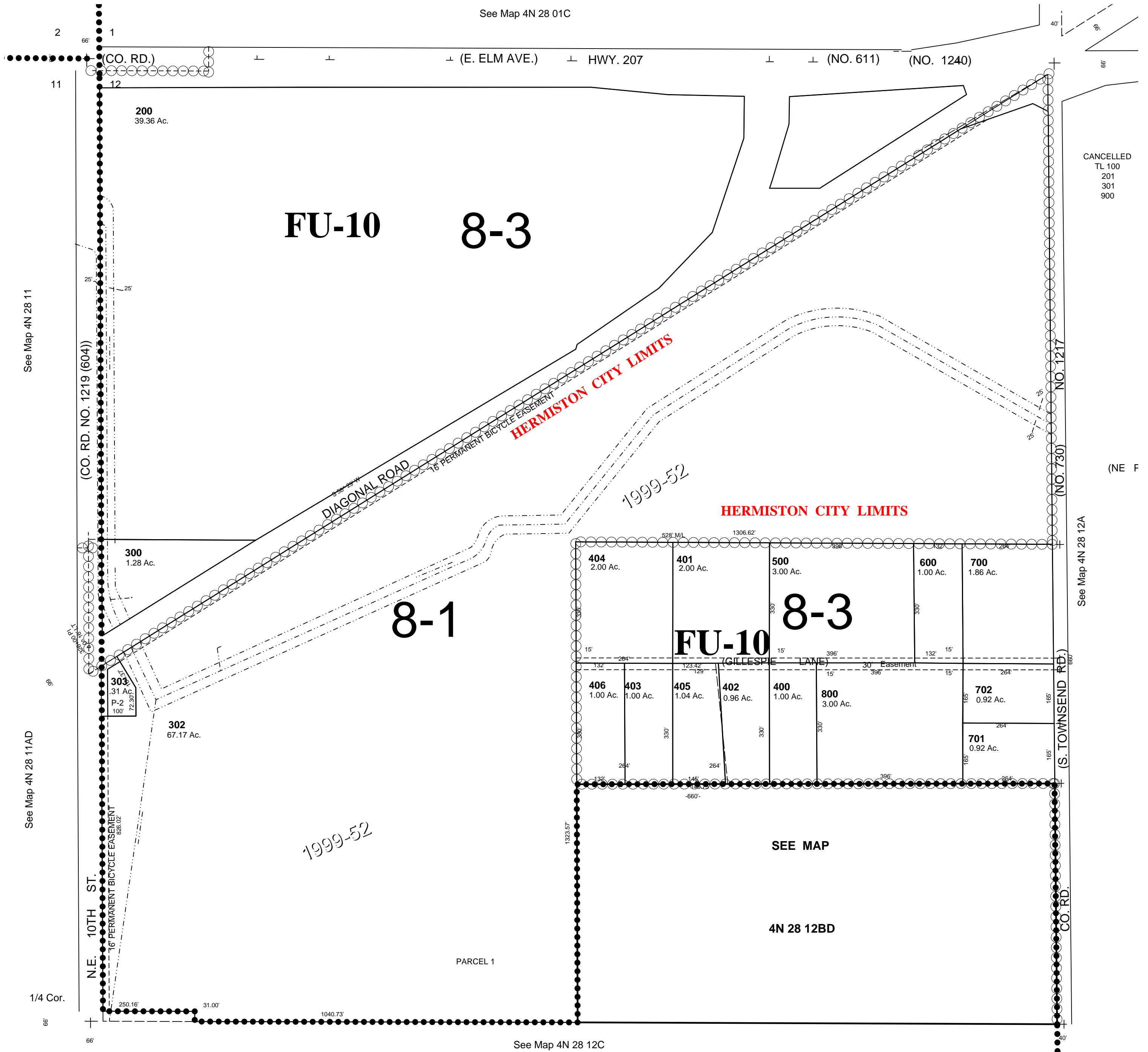
NW1/4 SEC12 T4N R28E WM
UMATILLA COUNTY
SCALE 1"=200'

2/12/07

4N 28 12B

AERIAL PHOTO NO. NZ 1P-125
HERMISTON URBAN GROWTH AREA

All in Stage Gulch Critical Ground Water Area
All in Hermiston Airport Hazard Zone



4N 28 12B