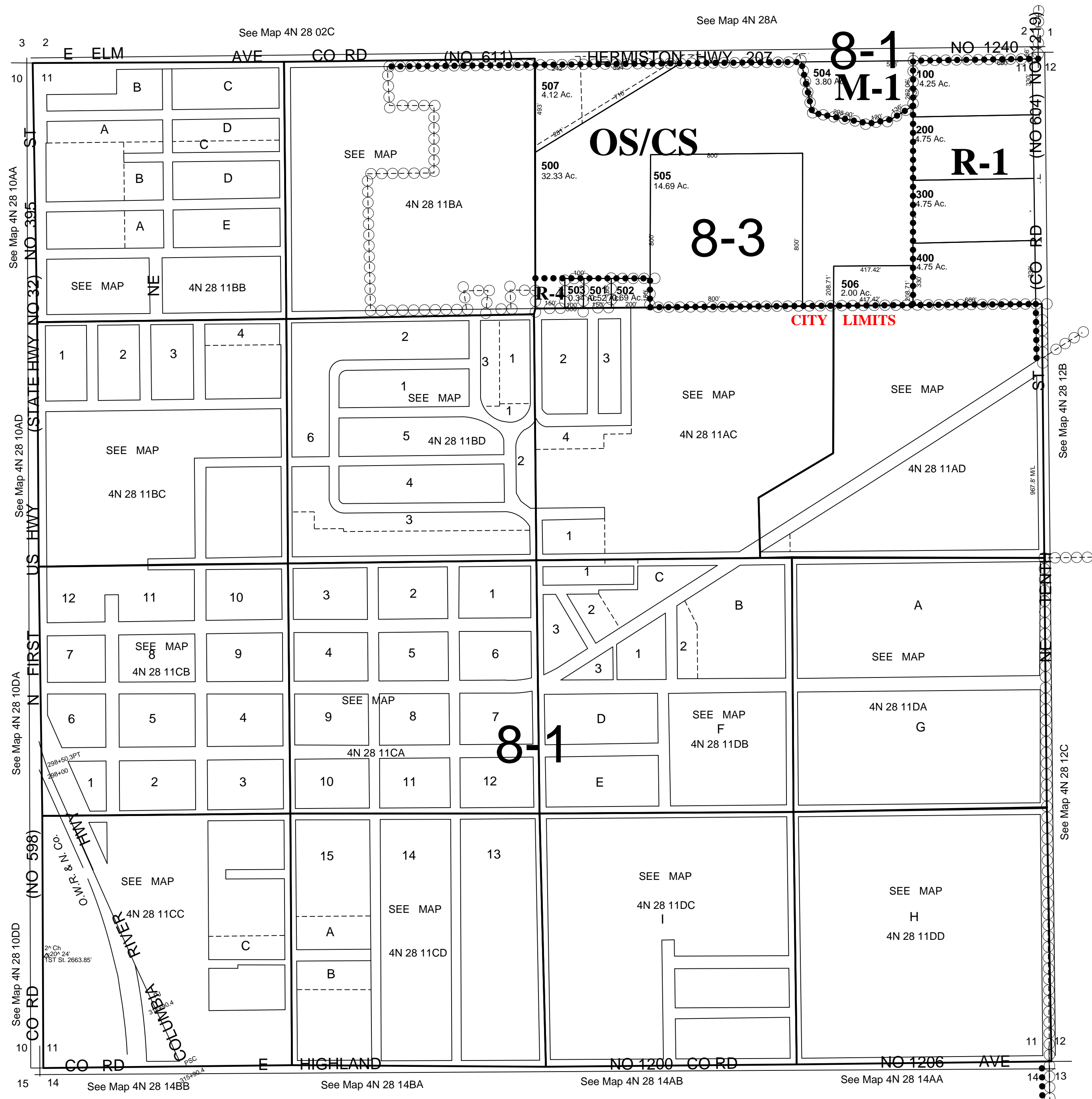


This map was prepared for Assessment & Taxation purposes only and has not been prepared for legal, engineering or surveying purposes.

Sec.11 T4N R28E WM
UMATILLA COUNTY
SCALE 1"=400'

5-8-07

4N2811
HERMISTON CITY & UGA
All in Stage Gulch Critical Ground Water Area



4N2811