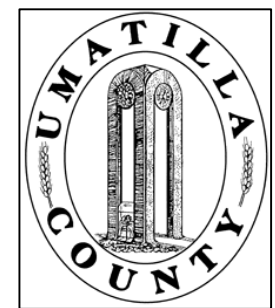


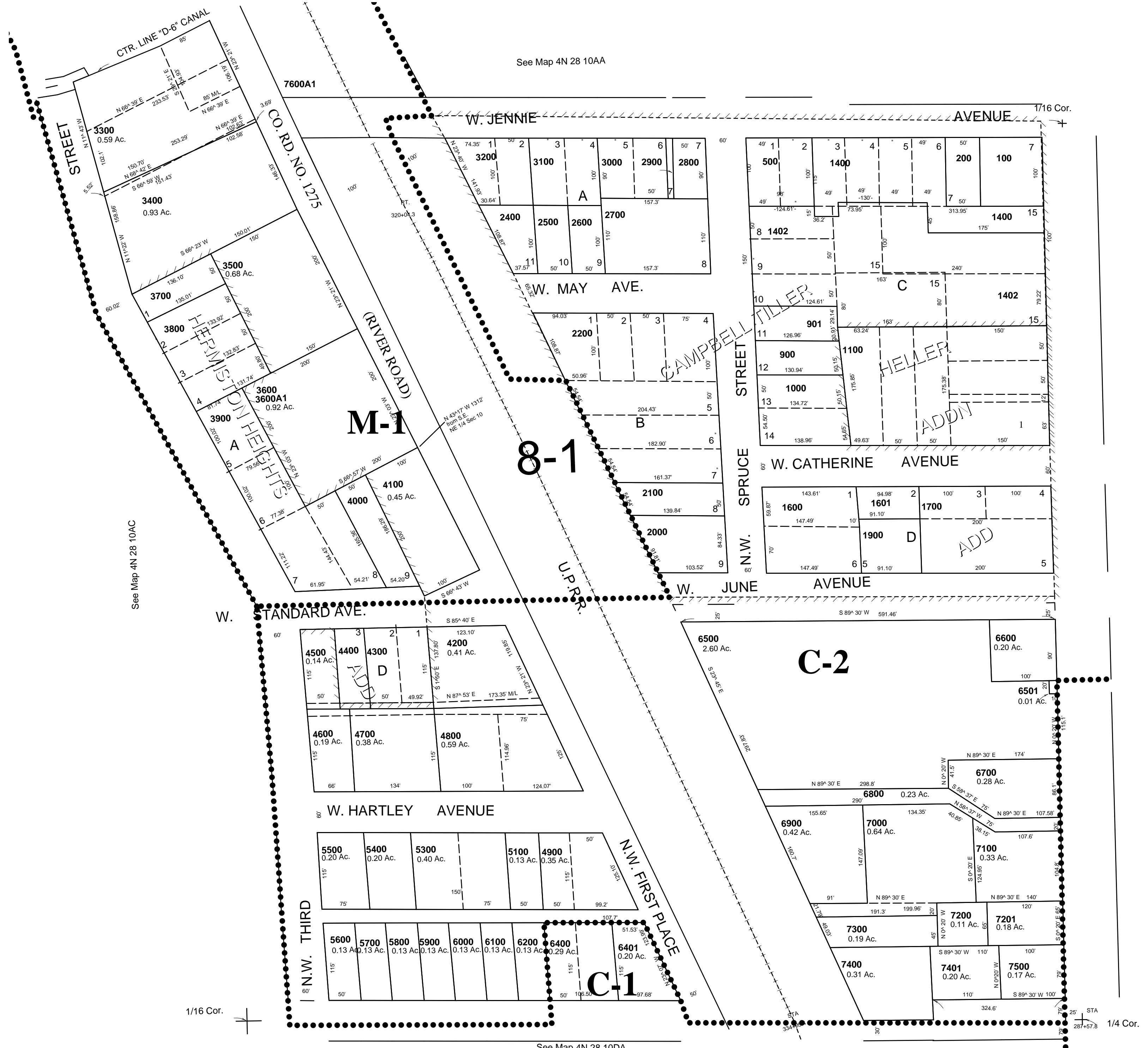
This map was prepared for Assessment & Taxation purposes only and was NOT prepared nor is it suitable for legal, engineering or surveying purposes.



SE1/4 NE1/4 SEC 10 T4N R28E WM UMATILLA COUNTY

4N2810AD
CITY OF HERMISTON

SCALE: 1" = 100'



CANCELLED
TL 1500
TL 7402
3401
6502
1800
2300
2301
2302
2303
2304
2305
7700
300
600
700
800
1401
5200
4201
6300
5000
400
1300
1300
5302

See Map 4N 28 11BC

1/16 Cor.

See Map 4N 28 10DA

4N2810AD