

This map was prepared for assessment purposes

# SE1/4 SW1/4 SEC 2 T4N R28E WM UMATILLA COUNTY

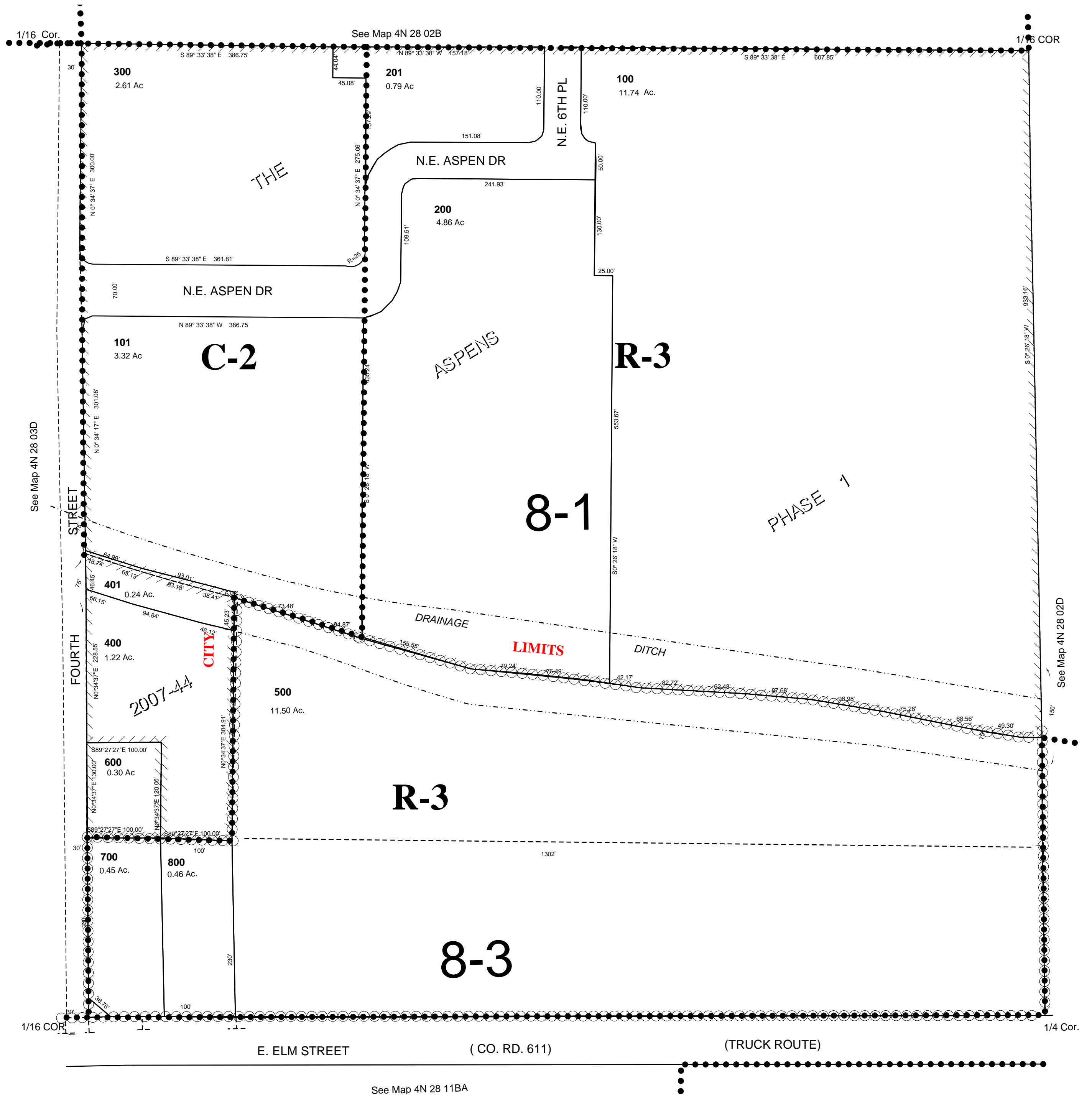
3/20/06

## 4N 28 02CD

AERIAL PHOTO NO. NZ 1P-122

Hermiston City & Urban Growth Area

SCALE 1"=100'



## 4N 28 02CD