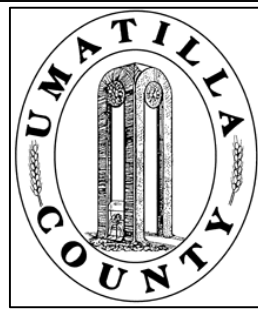


This map was prepared for Assessment purposes only.



SE1/4 NW1/4 SEC 2 T4N R28E WM UMATILLA COUNTY, OR

4/11/06

4N2802BD

City of Hermiston

Alora Heights Subd

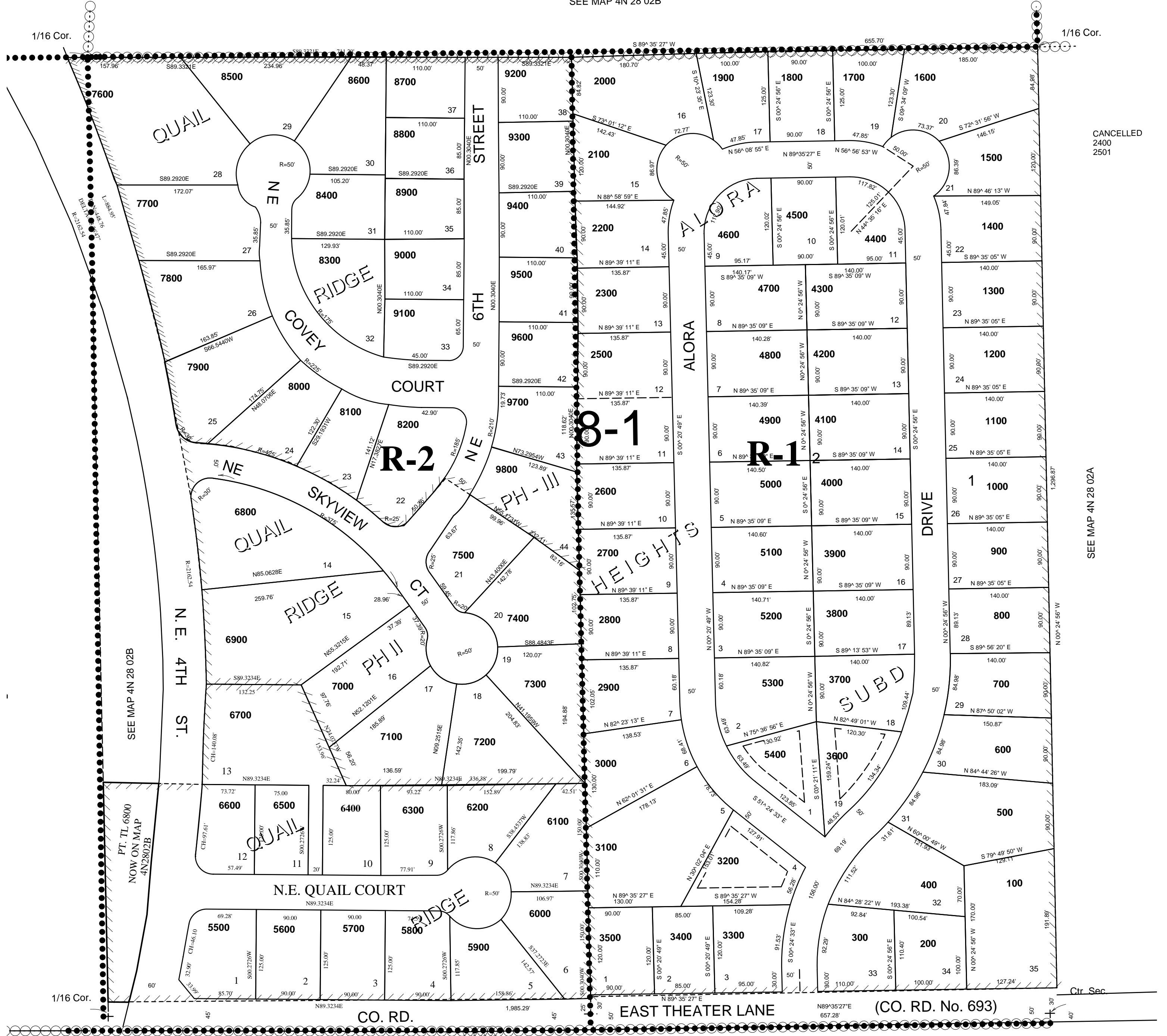
Quail Ridge

Quail Ridge Phase II

Aerial Photo No. NZ-1P-122

SCALE: 1" = 100'

SEE MAP 4N 28 02B



SEE MAP 4N 28 02B

PT. TL. 6800
NOW ON MAP
4N2802B

SEE MAP 4N 28 02C

SEE MAP 4N 28 02A

4N2802BD