

This map was prepared for Assessment & Taxation purposes only and has not been prepared or is suitable for legal, engineering or surveying purposes.

NW1/4 SW1/4 SEC 1 T4N R28E WM

11/03/06

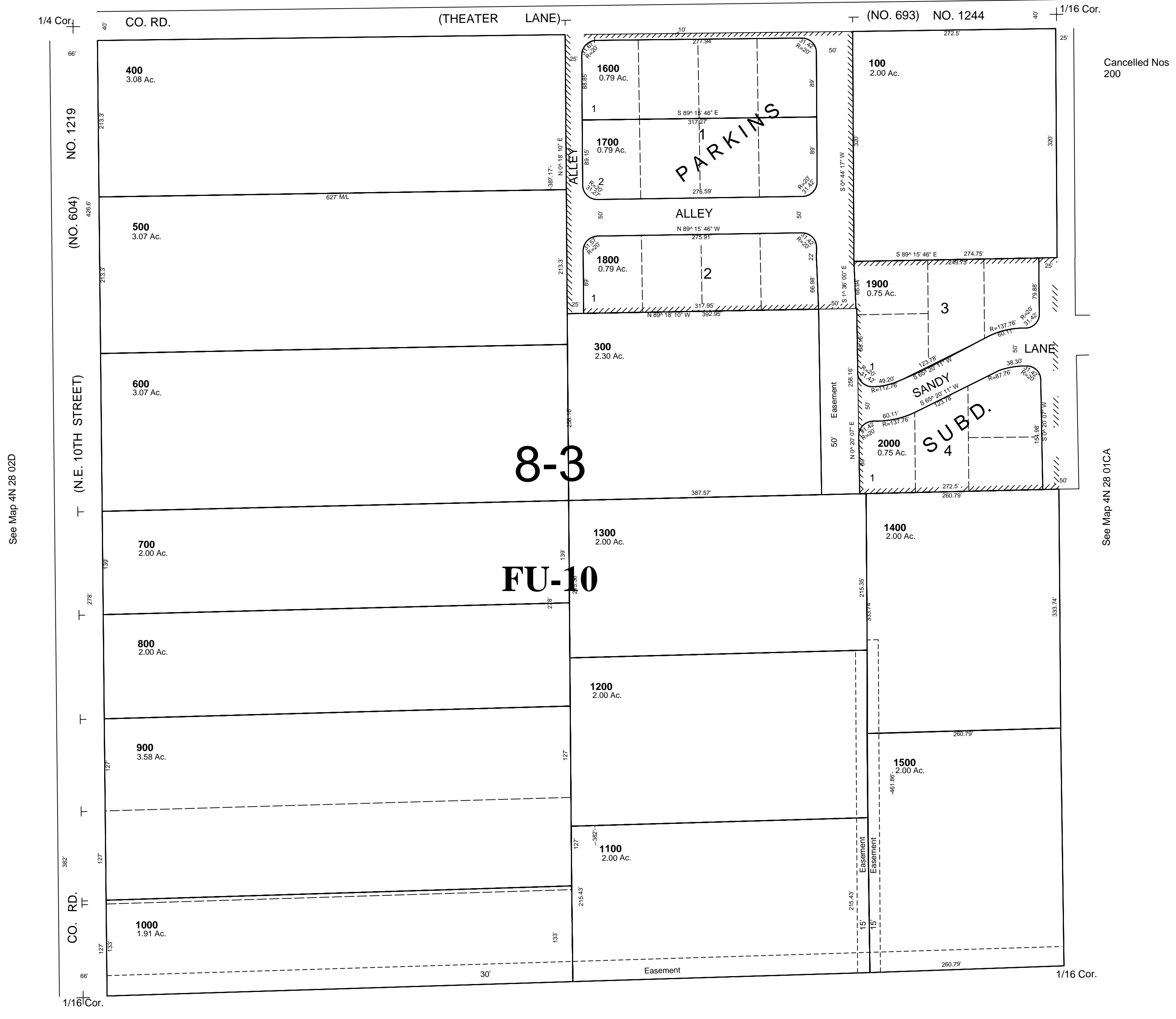
4N 28 01CB  
AERIAL PHOTO NO 1P-123

UMATILLA COUNTY

SCALE 1"=100'

Urban Growth Area  
All in Hermiston Airport Hazard Zone

See Map 4N 28 01B



See Map 4N 28 02D

See Map 4N 28 01CA

See Map 4N 28 01C

4N 28 01CB