

This map was prepared for assessment purposes

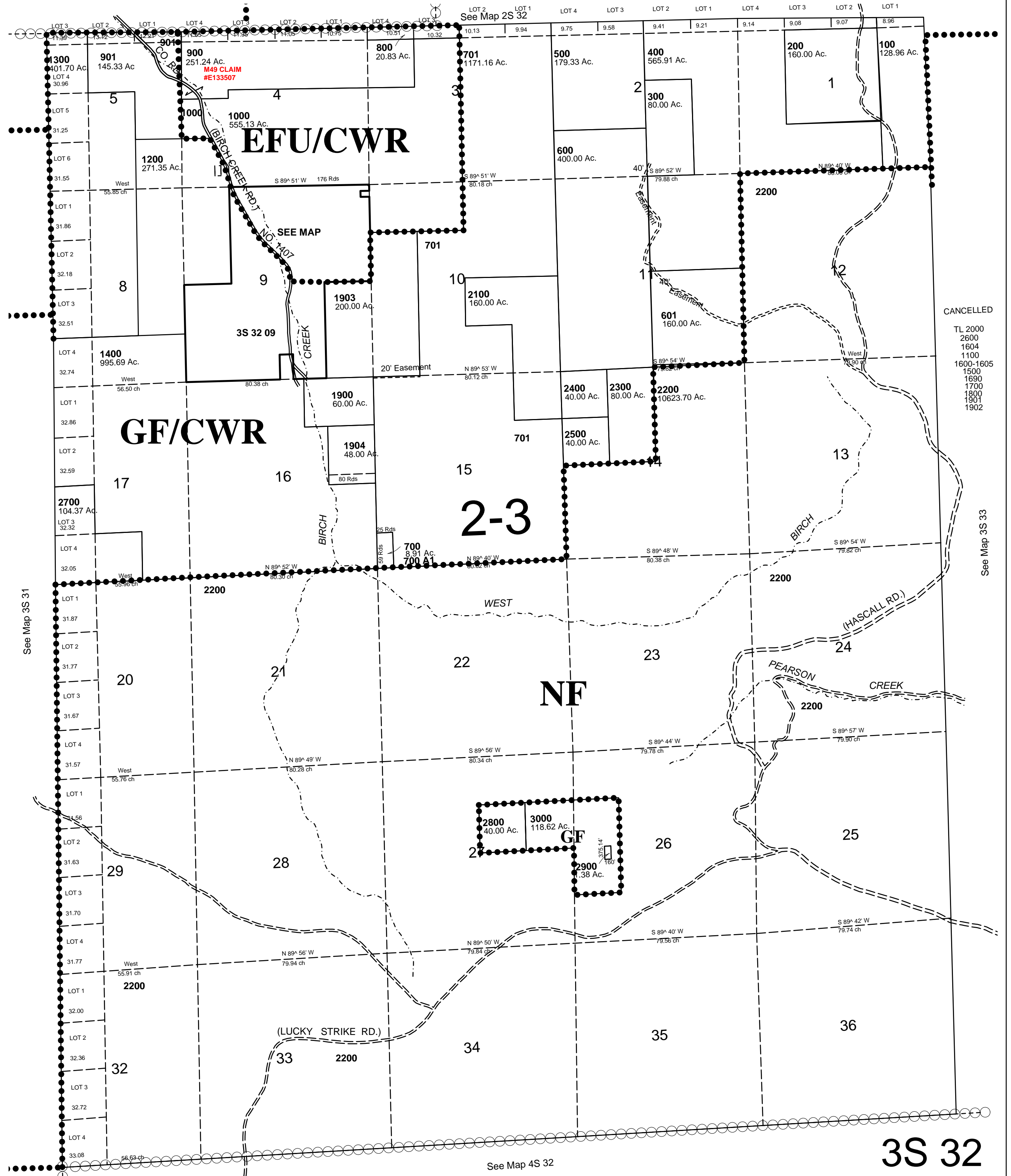
1"=2000'

# T3S R32E WM UMATILLA COUNTY

4/6/05

## 3S 32

AERIAL PHOTO NO. 1 P 18-24 & 9P 93-100



CANCELLED  
TL 2000  
2600  
1604  
1100  
1600-1605  
1500  
1620  
1700  
1800  
1901  
1902

See Map 3S 33

See Map 3S 31

See Map 4S 32

## 3S 32