

This map was prepared for Assessment and Taxation purposes only and has NOT been prepared for legal, engineering or surveying purposes.

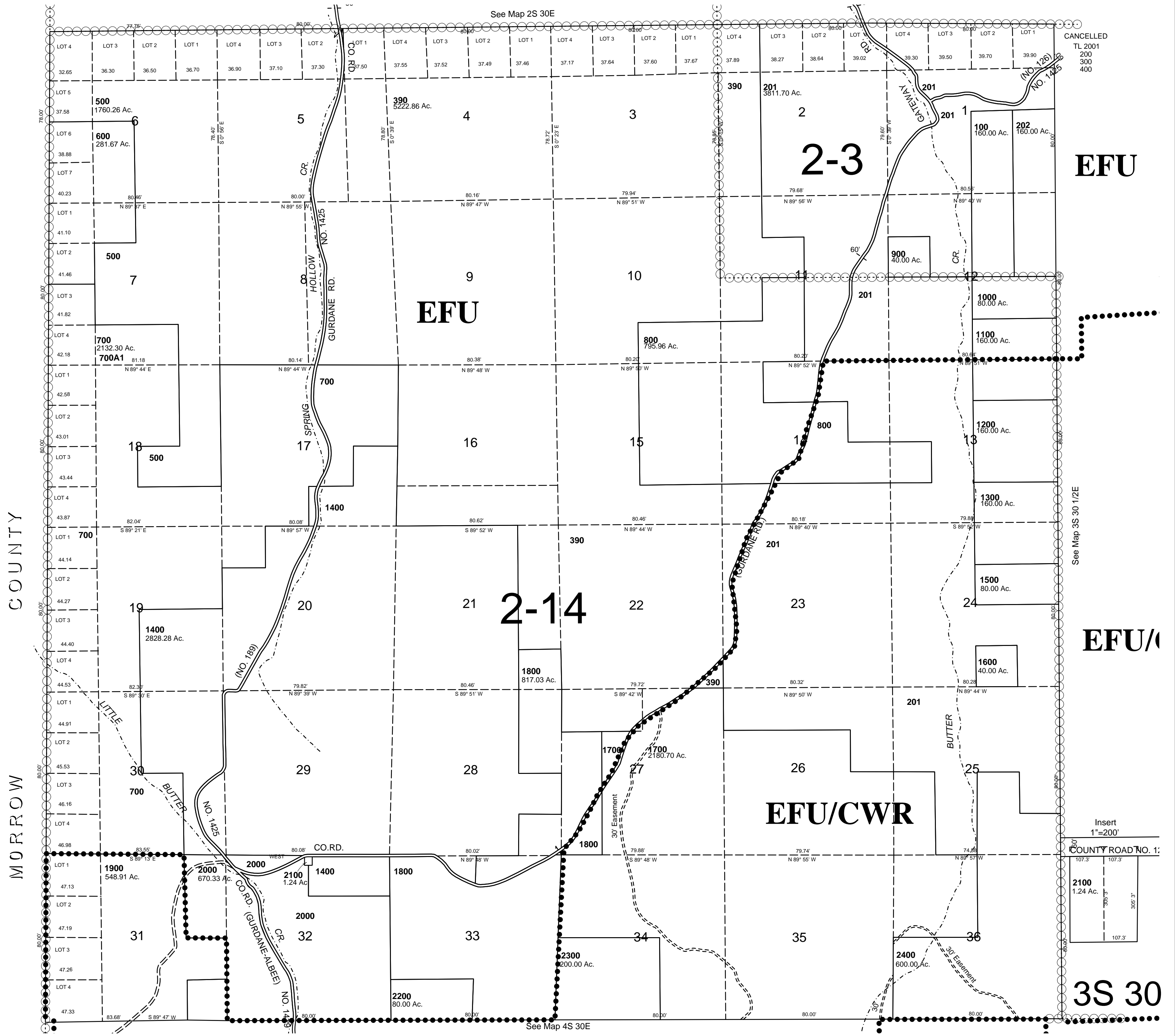
T3S R30E WM UMATILLA COUNTY

3S 30

AERIAL PHOTO NO. NZ 9P 67-72, 10P 4-10, 9P 79-83

SCALE 1" = 2000'

See Map 2S 30E



EFU

EFU

2-14

EFU/

EFU/CWR

3S 30

MORROW COUNTY

See Map 3S 30 1/2E

Insert
1"=200'
COUNTY ROAD NO. 1:
107.3 107.3
2100
1.24 Ac.
300.0'
107.3'

See Map 4S 30E