

This map was prepared for assessment purposes

# SE1/4 SE1/4 SEC 4 T3N R34E WM UMATILLA COUNTY

6/20/05

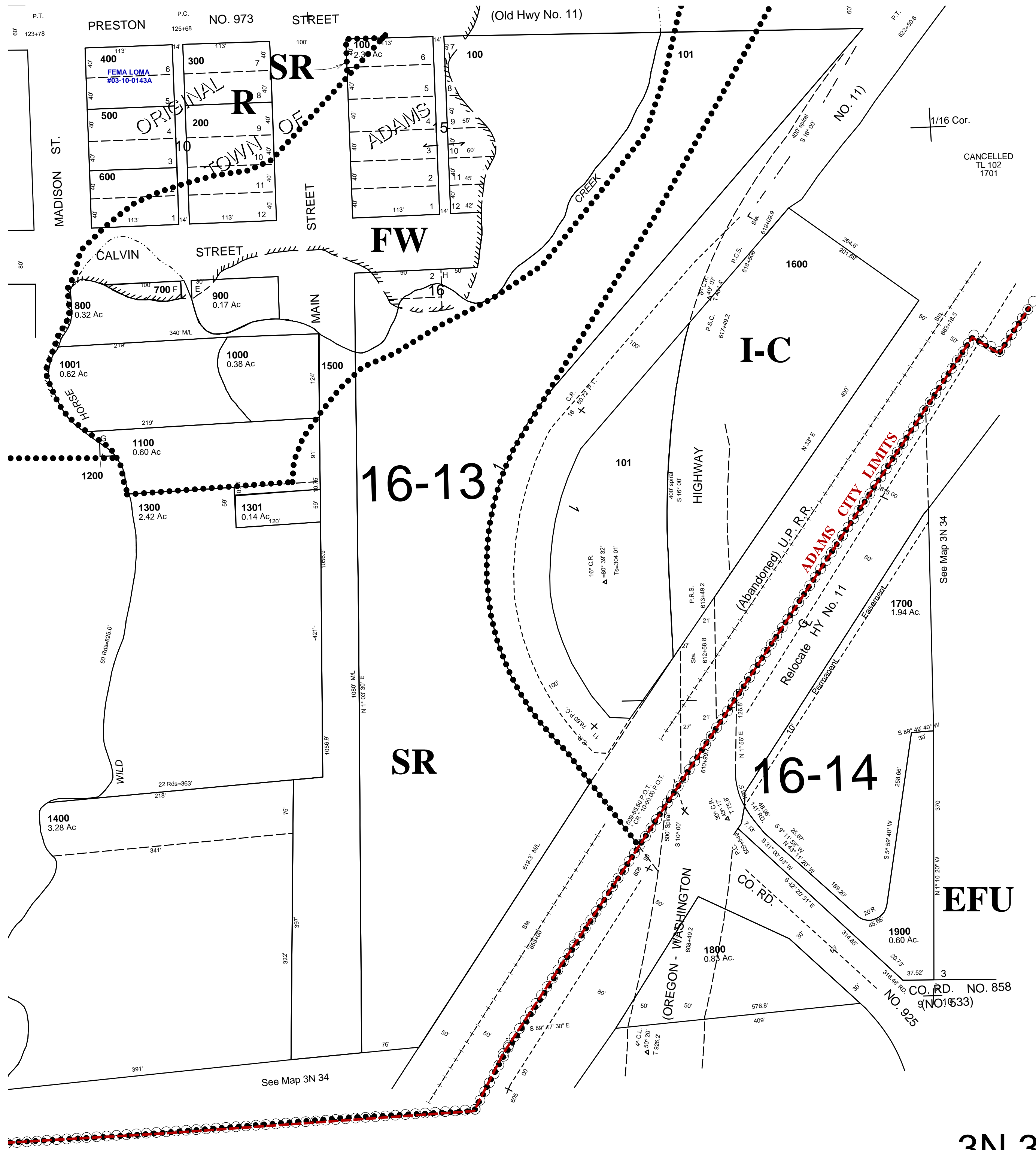
## 3N 34 04DD

AERIAL PHOTO NO. 5P - 169

CITY OF ADAMS

See FIRM for areas subject to flooding

SCALE: 1" = 100'



## 3N 34 04DD