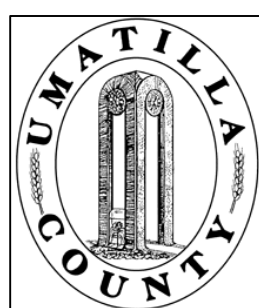


This map was prepared for Assessment purposes only.



SEC 34 T3N R31E WM UMATILLA COUNTY, OR

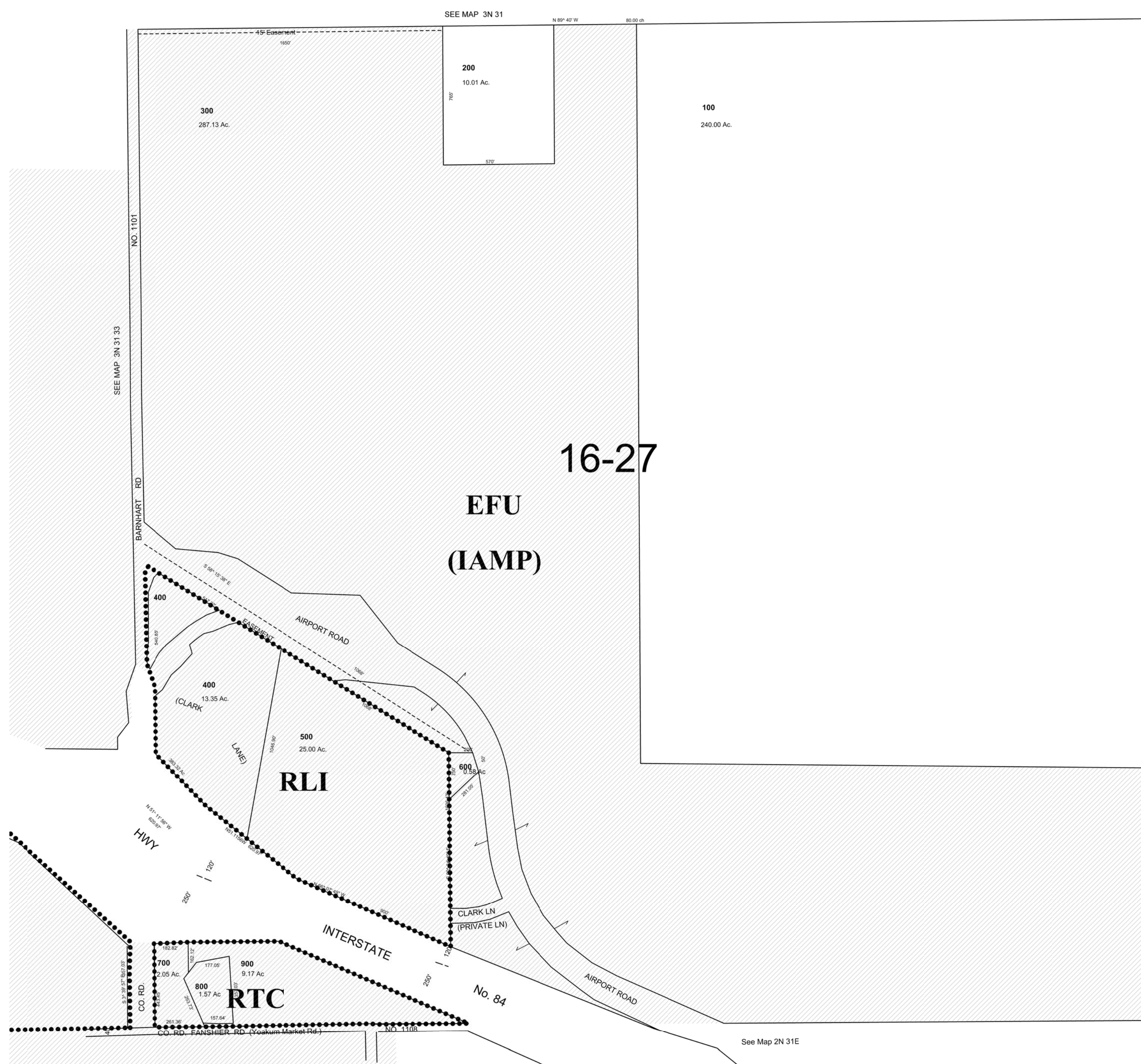
SCALE: 1" = 400'

10/04/04

3N 31 34

AERIAL PHOTO NO. 2P 69-70, 72, 121-124, 132
2P 134 & 136

IAMP - I-84/Barnhart Road Interchange Area Management Plan Overlay Zone



3N 31 34