

This map was prepared for assessment purposes

SW1/4 SEC 9 T3N R29E WM UMATILLA COUNTY

SCALE 1"=200'

9/13/06

3N 29 09C

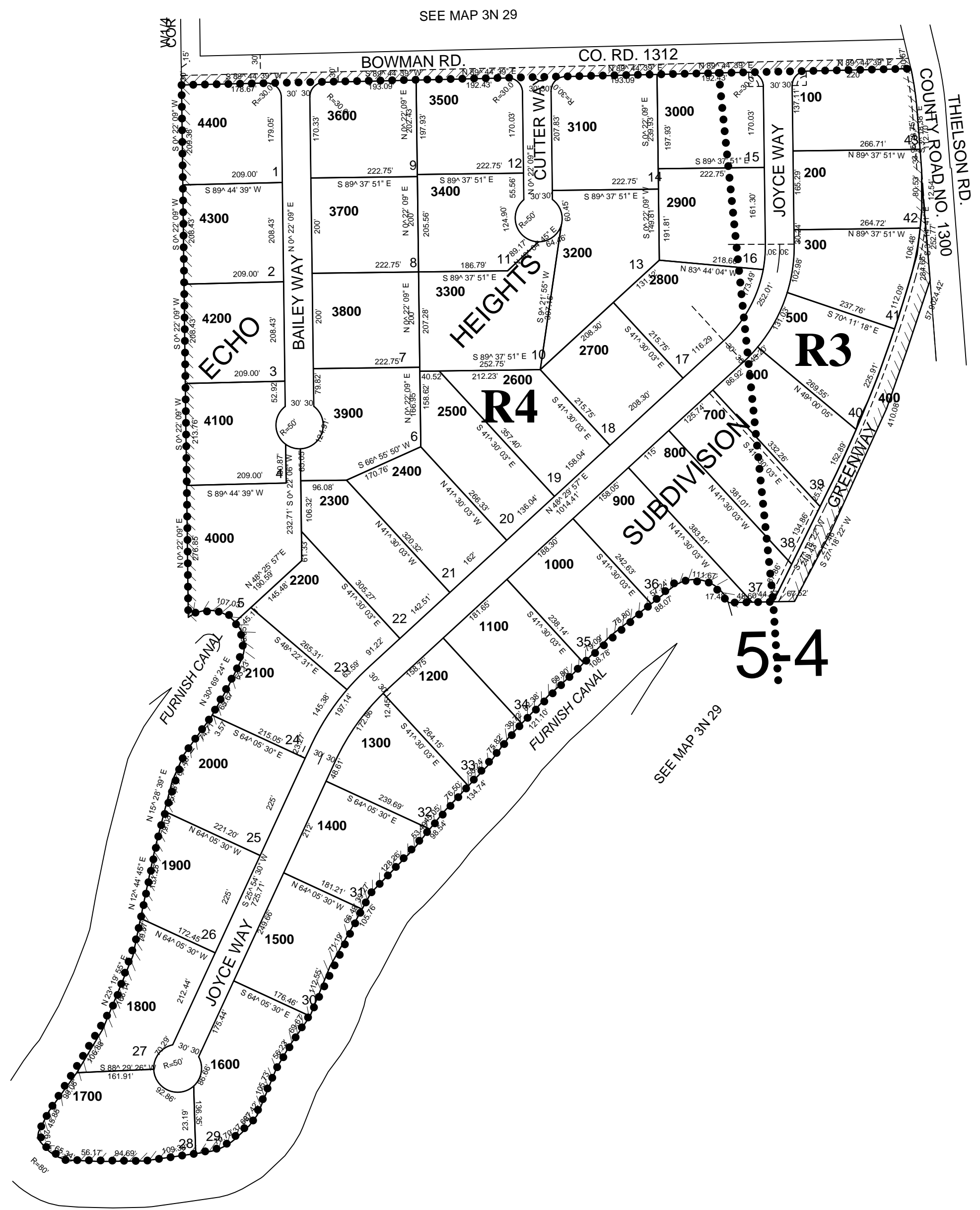
ECHO URBAN GROWTH AREA

All in Stage Gulch Critical Ground Water Area

NOTE: Per subdivision approval by the County and contained within the recorded CCR setbacks will meet City of Echo standards found in 9-4A-3 and 9-4B-4

City R-1 Zone
9-4A-3: SFD & MultiFamily Dwellings
(Other setbacks apply to accessory structures)
Side setback = 10' (see exceptions)
Side setback corner lot = 15' (see details)
Rear setback = 15'
Front setback = 15'

City R-2 Zone
9-4B-4: Dwellings
(Other setbacks apply to accessory structures)
Side setback = 10' (see exceptions)
Side setback corner = 15'
Rear setback = 20'
Front setback = 20'



SEC 8 SEC 9

3N 29 09C