

This map was prepared for assessment purposes

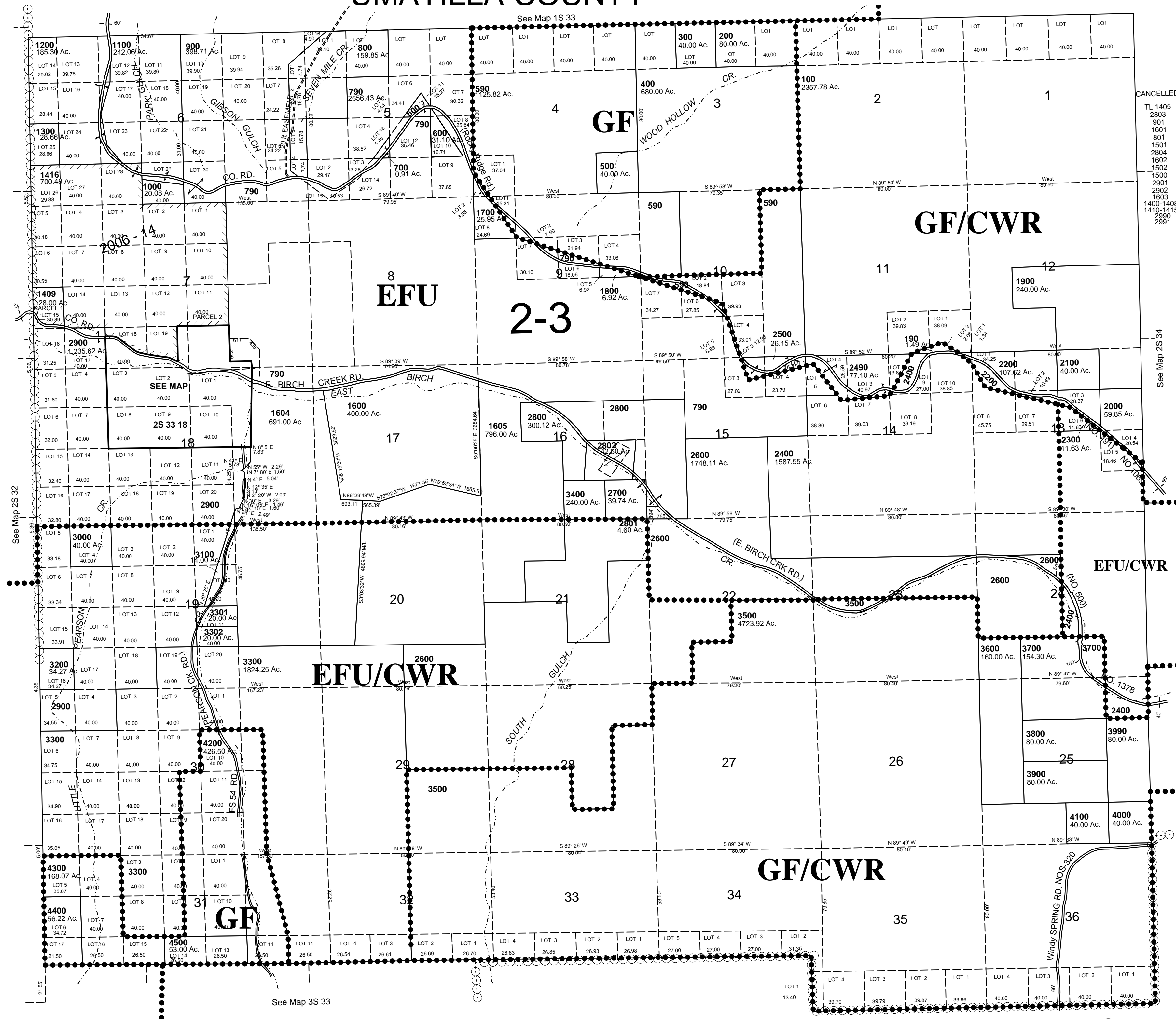
1"=2000'

# T2S R33E WM UMATILLA COUNTY

4/5/05

## 2S 33

AERIAL PHOTO NO. NZ 8P 15, 17 & 7P-155



CANCELLED  
TL 1405  
2803  
901  
1601  
1601  
2804  
1602  
1502  
1500  
2901  
2902  
1603  
1400-1408  
1410-1415

See Map 25 34

See Map 25 32

See Map 3S 33

UNION

COUNTY

## 2S 33