

This map was prepared for Assessment & Taxation purposes only and was NOT prepared nor is it suitable for legal, engineering or surveying purposes.

T2N R34E WM UMATILLA COUNTY

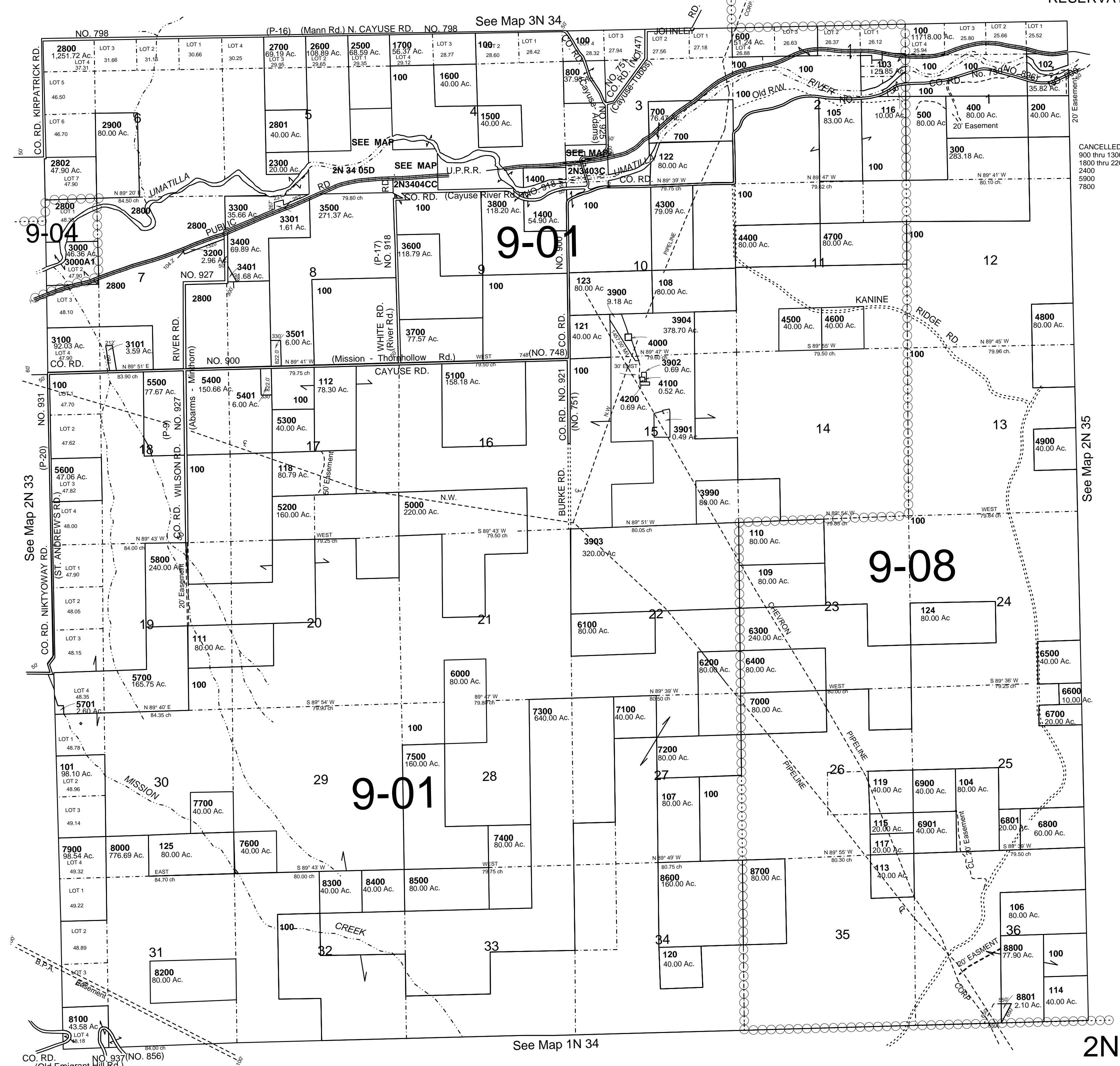
1" = 2000'

Revised: 12/17/07

2N 34

AERIAL PHOTO NO. NZ 4P 39-41, 68-71 & 91-95

RESERVATION



See Map 2N 35

See Map 2N 33

See Map 1N 34

2N 34