

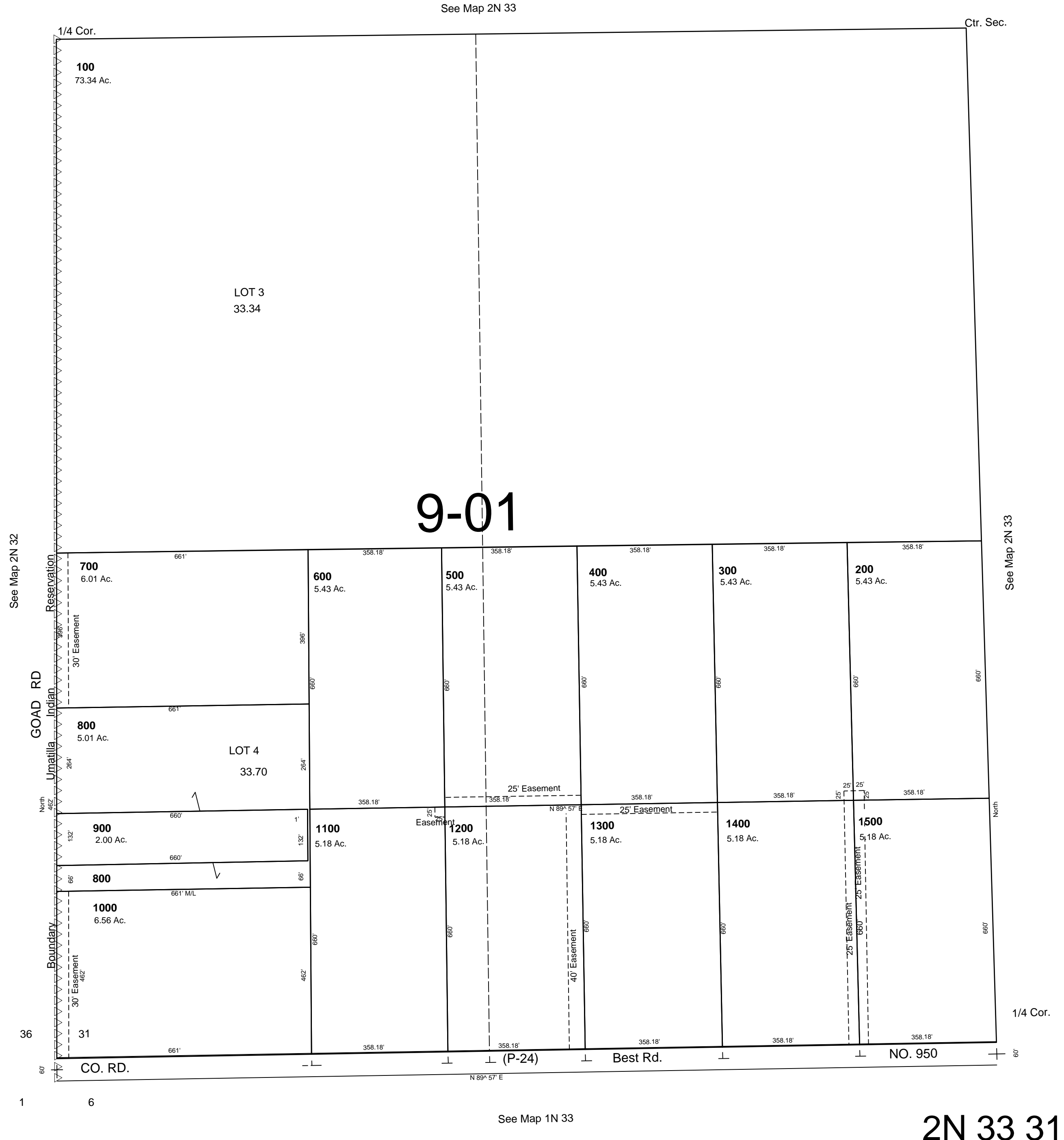
This map was prepared for Assessment and Taxation purposes only and has NOT been prepared for legal, engineering or surveying purposes.

SW 1/4 SEC 31 T2N R33E WM
UMATILLA COUNTY
SCALE 1"=200'

2/12/07

2N 33 31C

AERIAL PHOTO NO. NZ 4P-47
RESERVATION



2N 33 31C