

This map was prepared for assessment purposes

SE1/4 SW1/4 SEC 6 T2N R33E WM
UMATILLA COUNTY
SCALE 1"=100'

10/26/06

2N 33 06CD

AERIAL PHOTO NO 4P-101

RESERVATION

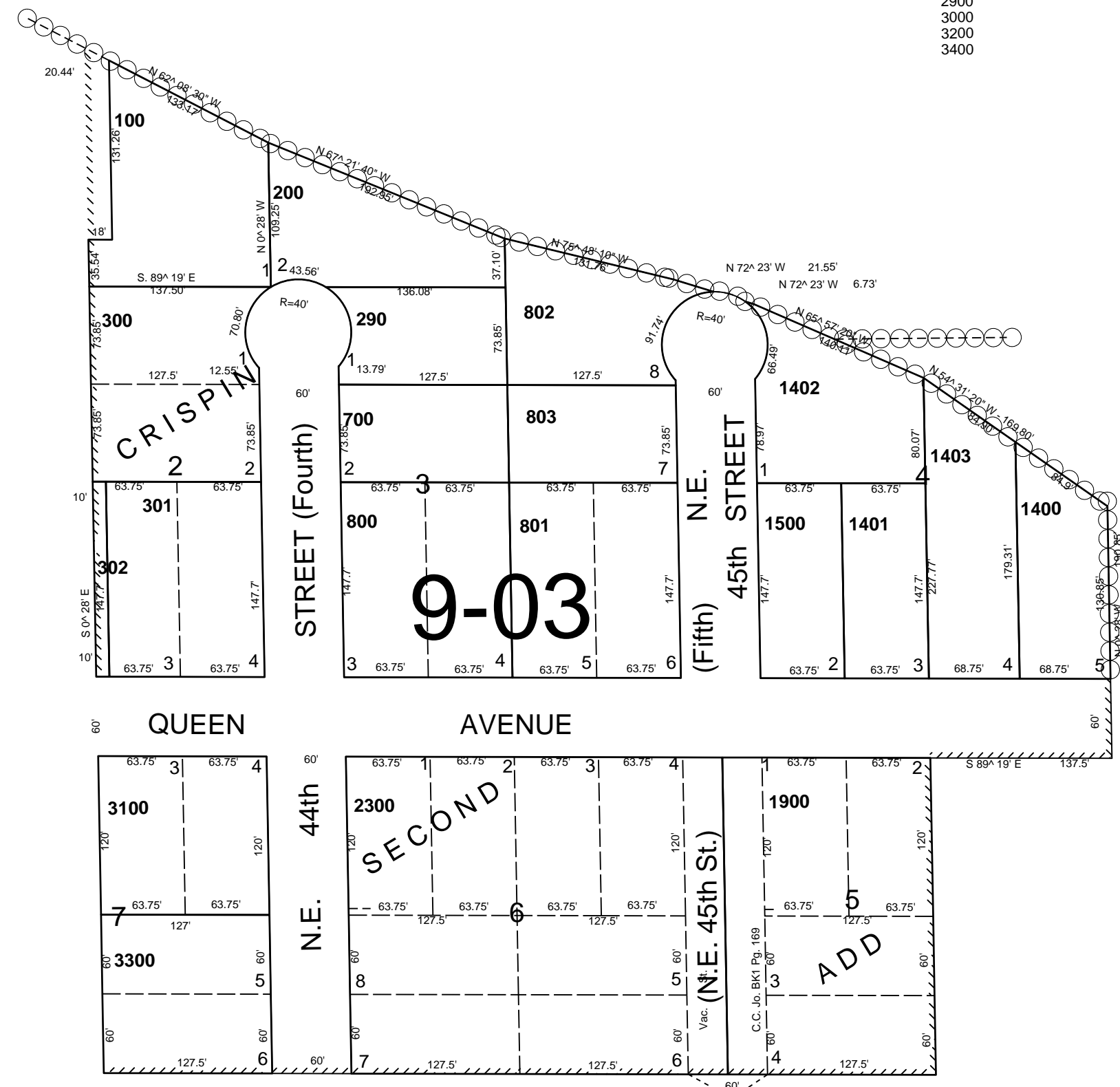
See Map 2N 33 06

- CANCELLED
- TL 400
- 500
- 600
- 700
- 800
- 900
- 1000
- 1100
- 1200
- 1300
- 1400
- 1500
- 1600
- 1700
- 1800
- 1900
- 2000
- 2100
- 2200
- 2300
- 2400
- 2500
- 2600
- 2700
- 2800
- 2900
- 3000
- 3100
- 3200
- 3300
- 3400

See Map 2N 33 06CC

See Map 2N 33 06

1/16 Cor.



See Map 2N 33 07

2N 33 06CD