

This map was prepared for assessment purposes

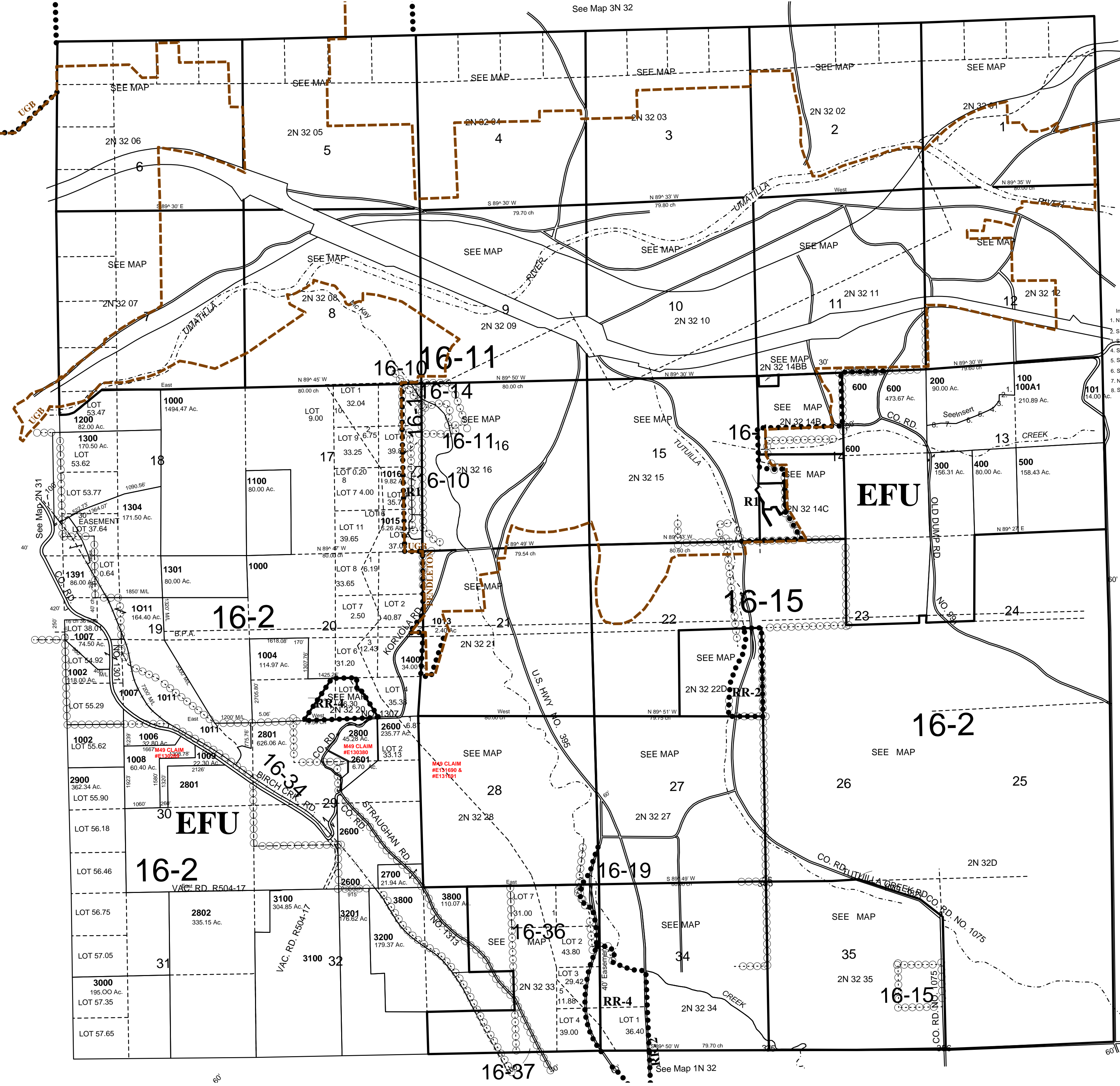
SCALE 1"=2000"

T2N R32E WM UMATILLA COUNTY

3/15/05

2N 32 & INDEX

See Map 3N 32



Cancelled No
 401
 501
 700 thru 705
 800 thru 802
 900 thru 905
 1001 1003
 1005 1010
 1012 1014
 1302 1303
 1390 1392
 1393
 1500 thru 1502
 1600 thru 1609
 1700 thru 2200
 2300 thru 2302
 2400
 2500 thru 2508
 3101
 3300 thru 3305
 3400 thru 3404
 3500 3600
 3700 3900
 4000
 4001 thru 4300
 4100 4200
 4300

Insert No. 1
 1. N 84° 0' W 415.9'
 2. S 1° 0' W 203.9'
 3. S 89° 28' W 277.6'
 4. S 53° 17' W 147.8'
 5. S 73° 56' W 424.0'
 6. S 71° 37' W 924.0'
 7. N 85° 29' W 431.2'
 8. S 82° 47' W 227.2'

See Map 2N 33

2N 32