

This map was prepared for Assessment & Taxation purposes only and has not been prepared for legal, engineering or surveying purposes.

SEC 21 T1S R32E WM UMATILLA COUNTY

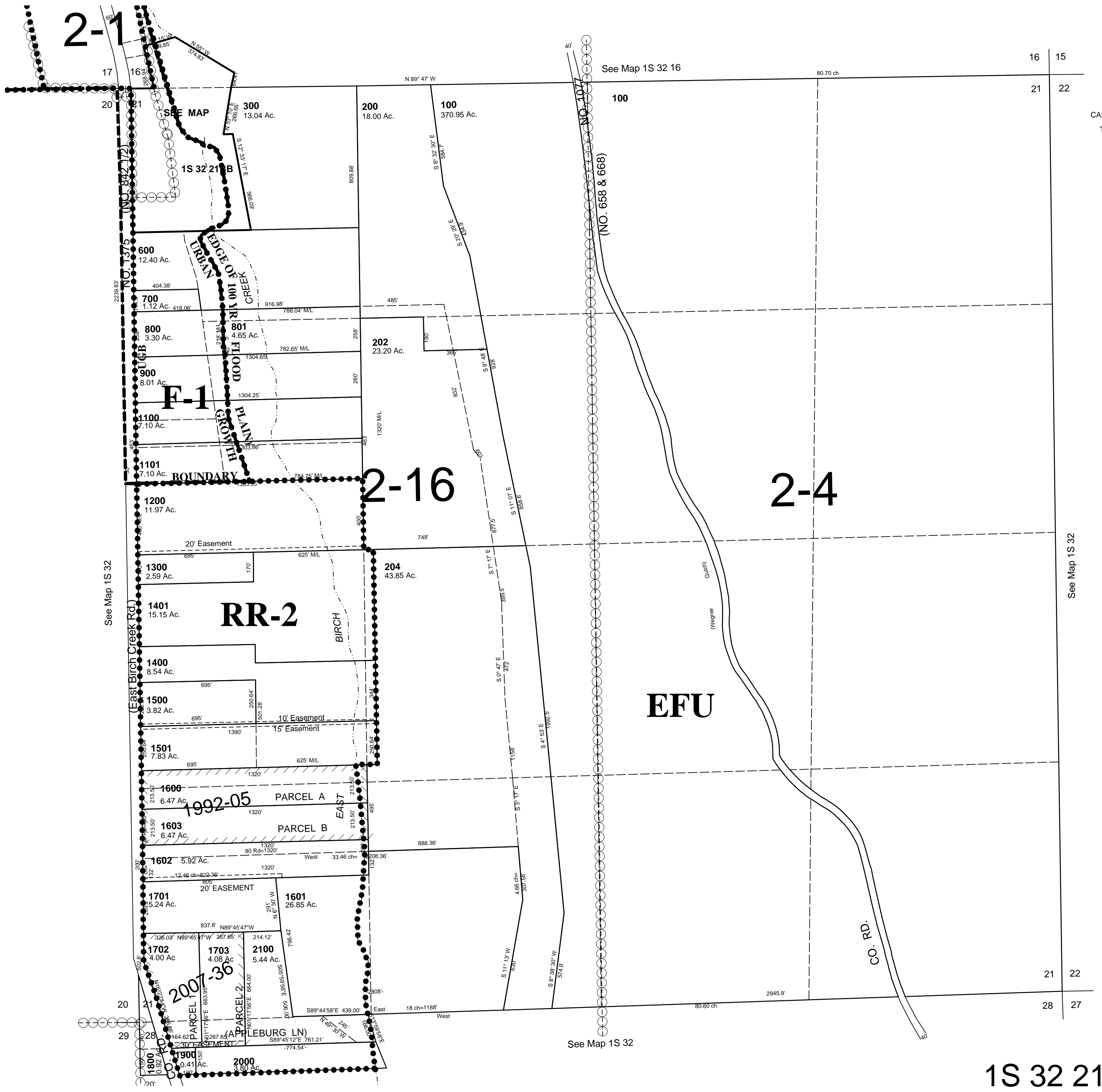
SCALE 1"=400'

11/20/07

1S 32 21

AERIAL PHOTO NO 7P-70
P/O Pilot Rock Urban Growth Area

See FIRM for areas subject to flooding



CANCELLED
TL 1000
203
201
205
1700
301
400
401
402
500
501
502

1S 32 21