

This map was prepared for Assessment purposes only and was not prepared nor is it suitable for legal, engineering or surveying purposes.

# SEC 17 T 1S R 32E WM UMATILLA COUNTY, OR

Revised: 7-3-08

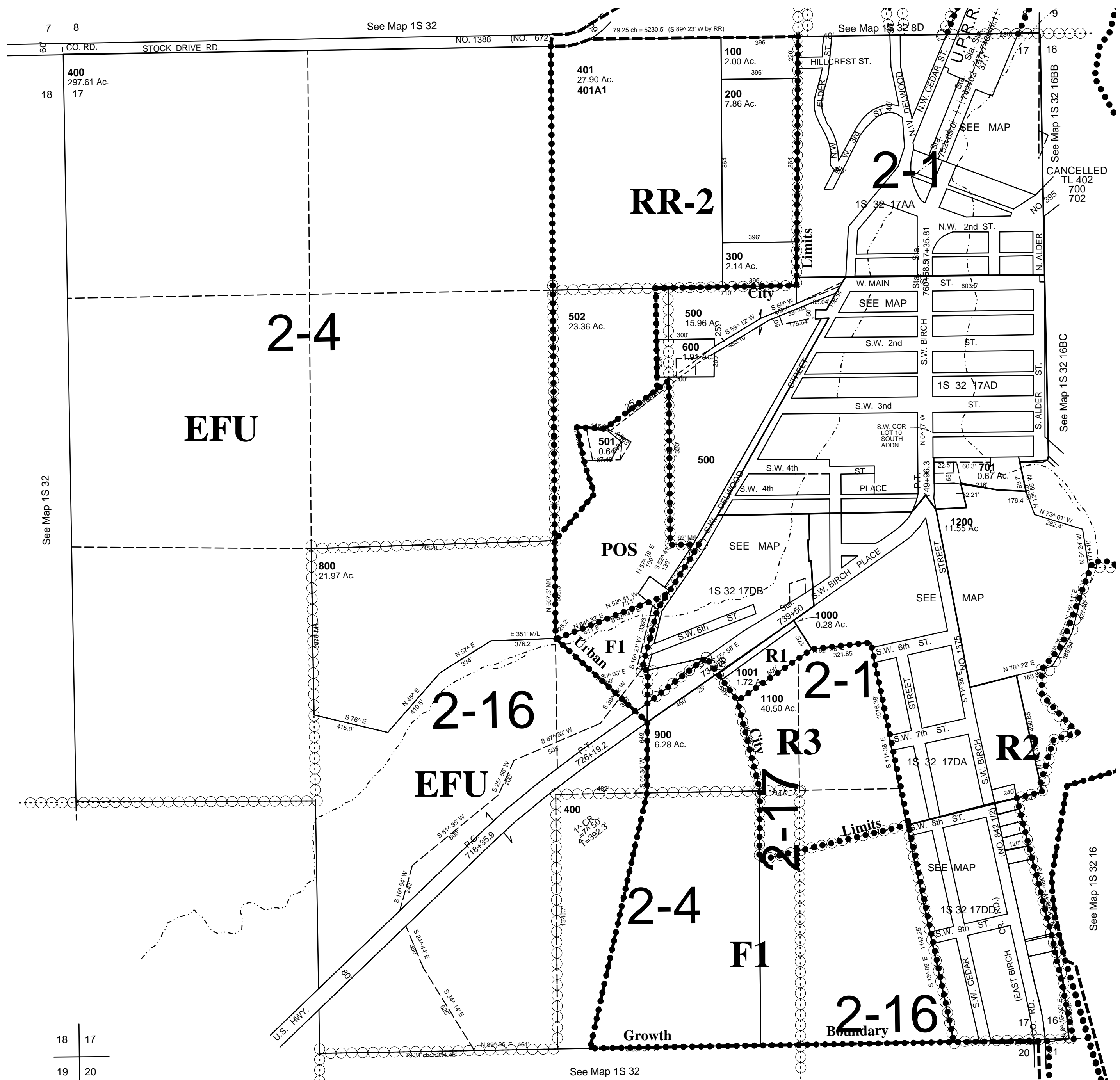
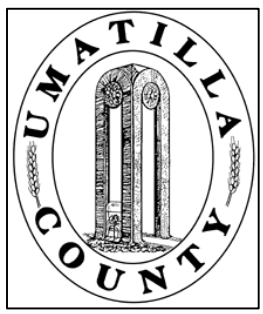
## 1S 32 17

AERIAL PHOTO NO. 7P-69

### CITY OF PILOT ROCK

SCALE: 1" = 400'

See FEMA FIRM for areas subject to flooding



1S3217