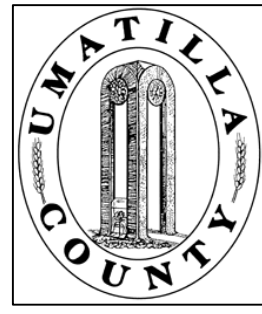


This map was prepared for Assessment purposes only.



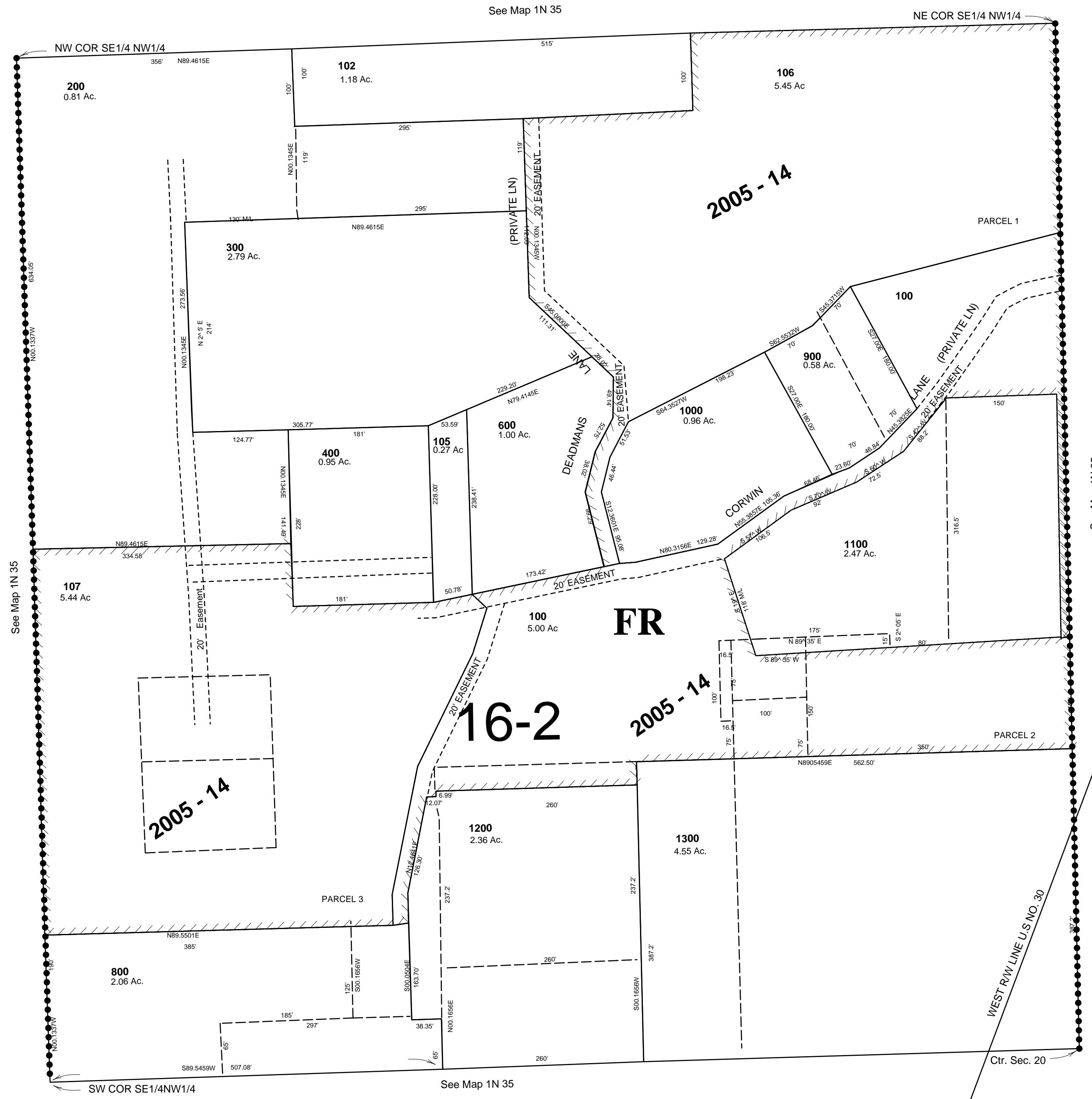
SE1/4 NW1/4 SEC 20 T 1N R 35 E WM UMATILLA COUNTY, OR

6/28/05

1N 35 20BD

SCALE: 1" = 100'

AERIAL PHOTO NO. 3P-166



CANCELLED
TL 700
104
103
500
101

1N 35 20BD