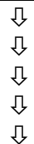
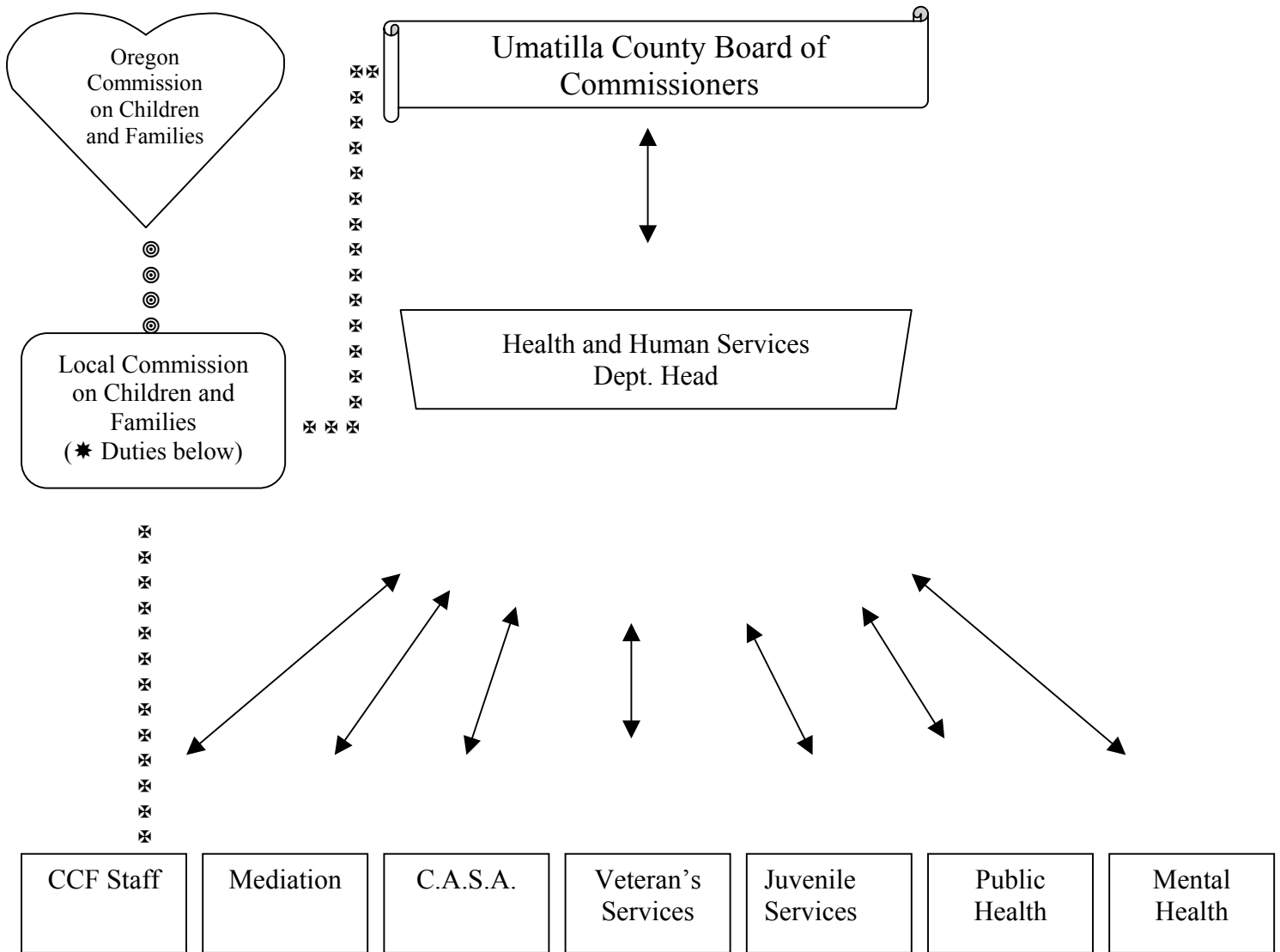


**LEGEND**

⌘⌘⌘ *Direction from BOC*

⊙⊙⊙ *Guidelines from OCCF*

↔ *Administration & Management*



⇒⇒⇒⇒ **COMMUNITY MOBILIZATION AND COORDINATION WITH OTHER ENTITIES**  
 (i.e.; County Departments, Law Enforcement, Local Govt., Schools, Non-Profit Agencies, Faith Communities, Private Sector Business, Youth Development Organizations, etc.)

**Duties of LCCF:**

- \*1. Follow direction given by Board of Commissioners and guidelines established by state OCCF
- \*2. Promote wellness of children and families
- \*3. Mobilize communities
- \*4. Develop policy
- \*5. Oversee implementation of local coordinated comprehensive plan
- \*6. Other, per ORS 417.775 & 417.777