

At Request of Warren W. Roeder - C.A. Andrews & Alta Rodgers.

NW 1/4 Sec. 35 - Tp 6 N R 35 E. W.M.

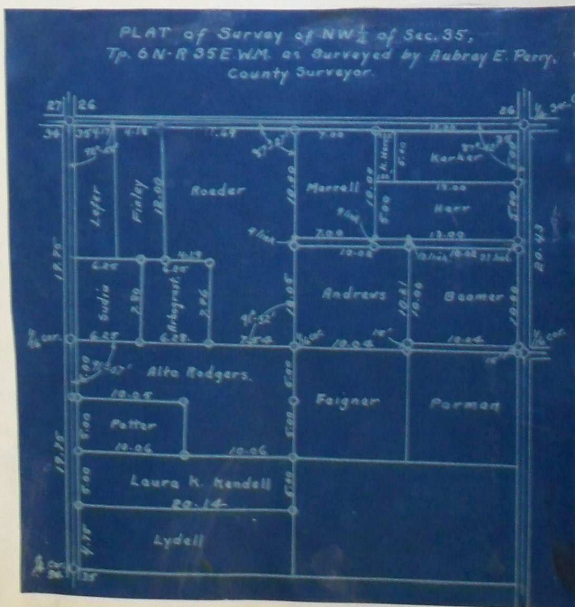
After Chas. Lance - Chainman being duly sworn, I begin at the W 1/2 cor. bet. Sec. 34-35 which I establish on line with Henry Groth's fence and 20' E. of corner post. The old rock was removed by Jim Thompson when the road was cleaned. Rock marked 1/4 - size 8"x8"x8" buried in ground about 2' North of culvert. This rock was established on the sworn statement of Henry Groth and Geo. Lydell.

Proceeding then to the Sec. Cor. bet. Sec. 34-35-26-27, I measured over 20' W. from Fence cor. NW of Center of Road and dug and found iron bar, then I dug 20' S. of this point and found old rock but it had been broken in two, so I reset a new rock, marked X on top - 11 on E - 111 on W - 1 on S - 6"x6"x12" set deep in ground. A 14" Locust bears NW - 33

19 75 Then I run south on line bet. this sec. cor. and the 1/4 cor. and dig and found rock buried near west side of road marked X for 1/6 cor. from which a locust - 14" dia. - NW 32'-8" and a 12" locust - NW-53'-5"

Then I go to the cor (1/4) in road by Sunnyside Church. bet. Sec 26-35 which I find knocked over in the ground. a rock marked X on top. I bury the rock, and an. A locust 20" - NW-45 1/2 ft - A locust 15" SW-47 1/2 ft. A locust 5" NE 37 ft.

20 43 Thence I run south along the center of the road and dig and find old corner rock 1/6 cor. marked X and with brick around it. A fence corner is due West - 145' and Rock marked X. Land divided as shown below.



Corners of land joining on roads are set 20' back so as to be on the property lines. Roads 40' wide.

Ties to Corners set given on next page.

Roeder - Andrews - Rodgers.

NW  $\frac{1}{4}$  Sec. 35 Twp. 6 N R. 35 E.

## Ties to Corners.

Cor. bet. Herr &amp; Karker on East - Set a rock marked X - 20' W. of true corner.

A peach - 6" - NW - 22' 8" (S)

" " 6" NW - 45' 6" (N)

Cor. bet. Herr & Disputed strip<sup>(E)</sup> - Set a rock marked X in ground - 20' W. of true corner.

A cherry - 6" - SW - 6' 8" Brick in hole also.

" " 4" - NW - 27' 0"

Cor. bet. <sup>Strip</sup> Herr & Beamer on East. Set a rock marked X with brick in bottom 20' W. of true corner - 1' S. of end of white fence.

A cherry - 6" - NW - 11' 5"

A peach - 6" - SW - 18' 3"

S.E. Cor. of Beamers - Set a rock marked X - 20' W. of true cor. and 15' N. of  $\frac{1}{16}$  line.

An Apple - 8" - NW - 15' 6" (S)

" " 6" - NW - 26' 0" (N)

Parman - Andrew cor. on S. of Road strip. - Set a rock marked X 20' W. of  $\frac{1}{16}$  cor. by cor. post.

An apple - 8" - NW - 25' 8"

" " 10" - SW - 16' 5"

N  $\frac{1}{16}$  cor. on N-S line to center of Sec. - Rock marked X with brick buried in road.

An Apple - 8" - NW - 39' 8"

An Apple - 10" - SW - 35' 5"

Cor. bet. Parman - Andrews &amp; Feigner - Set a rock marked X

A prune tree 4" dia. - NW - 21' 6"

An Apple " 4" " - NW - 35' 4"

S.W. Cor. of Beamers - 15' N. of Cor. Parman - Feigner - Andrews - cor. Set a rock marked X

A prune tree 4" - NW - 28' 2"

An Apple " 4" - NW - 34' 6"

Cor. bet. Beamer &amp; Andrews on North. Set a rock marked X on W. of fence

A cherry tree - 5" - North - 8'

" " " 6" - NW - 12' 8"

Line Rock on North of Strip - 13' S. N. of Beamer - Andrew - cor. - Set a rock marked X

A cherry tree - 5" - South - 2' 4"

" " " 5" - NE - 15' 2"

Cor. bet. Morrel &amp; Herr on South - N. side of strip - Set a rock marked X - 9' N. of Rock marked

for line rock on S of strip from which it

A peach tree - 4" - NE - 48' 0" (S)

" " " 4" - NE - 54' 2" (N)

Cor. bet. Roeder &amp; Andrew on North - Set a rock marked X - Morrell's tree Cor. 4' N. N. East marked 1

A prune - 8" - SE - 26' 7" (N)

" " - 5" - SE - 30' 10" (S)

Cor. bet. Rodgers - Roeder &amp; Andrews - Drove an Iron bar 30" long in ground in middle of road.

A prune - 4" - SE - 16' 11" (W)

" " 4" - SE - 30' 4" (E)

Cor. bet. Roeder &amp; Arbergast - on S. - Set a rock marked X

An Apple - 8" - NW - 15' 5"

NW cor. of associated strip - 11' 0"

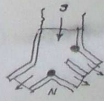
NE cor. of " " - 12' 0"

## RECORD OF SURVEY No. 427

Roden - Rodgers - Andrews.

NW 1/4 Sec 35 - T7p. 6N R 35E.

- Cor. in middle bet. Noeder + Arbogast - Set a rock marked X  
 An Apple - 3° SW 49' 4"  
 " " - 3° SE 69' 6"  
 (Note) Cor. agreed on bet. Noeder + Arbogast  
 13' 7" on line and 8' 3" on line,  
 from this cor.
- Cor. bet. Noeder, Finley, Arbogast - X cut in concrete divide floor - in div. going W. 6" from N side.
- Cor. bet. Arbogast + Sudu + Finley - Set a rock marked X in N. edge of ditch.  
 An apple - 6° SE 84' 0" (N)  
 " " - 6° SE 10' 7" (S)
- Cor. bet. Arbogast, Sudu + Rodgers - Set a rock marked X  
 An Apple - 11° NE - 24' 7" (S)  
 " " - 2° NE - 51' - 4" (W)
- 1/16 Cor. on W. of NW 1/4 found rock set marked X on W. of C. of road + N. of Mail box about 16'  
 A locust tree - N 2° NW 22' 8" (S)  
 A " - 12° NW - 58' 5" (N)
- Cor. bet. Rodgers + Potter on W. Set a rock marked X - 20' to E. of true cor. at cor. of fence.  
 An apple tree - 4° NE - 38' 7"  
 " " - 4° N - 68' 11"
- Cor. bet. Potter + Mrs. Kendall on W. Set a rock marked X - 20' E. of true cor. - 1' W. of cor. post of fence.  
 Electric pole - NW - 20' 9"  
 " " - SW - 85' 6"
- Cor. bet. Mrs. Kendall + Lydell on W. Set a rock marked X - 20' E. of true cor. made mound of stone  
 Electric pole - SW - 47' 4"  
 " " - NW - 119' 5"
- Cor. bet. Rodgers - Kendall + Potter. Set a rock marked X  
 A prune - 1° SE - 72' 2"  
 " " - 1° SW - 10' 0"
- Cor. bet. Rodgers 2 pieces and Potter - NE. cor. Potters. Set a rock marked X  
 An Apple - 3° NE - 74' 1 1/2"  
 " " - 3° NW - 23' 0"
- Cor. bet. Rodgers - 2 places + Feigner - Set a rock marked X by S. of stump.  
 Cor. of Bldg. - NW - 42' 1/2"  
 Prune tree - 6° NE - 10' 3"  
 " " - 6° SE - 16' 3"
- Cor. bet. Kendall - Rodgers - Feigner - Set a rock marked X  
 NW cor. of rock crib - 35' 4' 0"  
 A prune - 6° NE - 22' 0"
- Cor. bet. Kendall + Lydell on SE. Set a rock marked X  
 SW cor. of Wall curb - NW - 26' 6"  
 SE " " - " " - NW - 24' 3"
- Cor. bet. Marrell + Katie Herr on N. - Set a rock marked X  
 20' S. of true Cor. An apple tree - 18° SW - 71' 9" (N)  
 " " - " " - 18° SW - 27' 6" (S)
- N. Cor. bet. Marrell + Noeder. Set a rock marked X. 20' S. of true cor.  
 North A point of concrete divide  
 W - 8' 7"  
 E cor. of W. side - W - 12' 7"
- N. cor. bet. Noeder + Finley. Set a rock marked X 20' S. of true Cor.  
 A prune tree - 1" nearly S. - 5' 9"  
 Telegraph pole - West - 8' 1"



Surveyed April 7-8-9-10-1919

Gus Lance, Helper.

Rubey E. Perry.

County Surveyor.