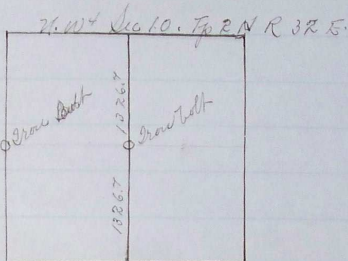


Wm. Rogers & J. Crawford

March 12 1901

Survey to Establish center of NW 1/4 of
Sec 10. T₂S. N. R. 32. E.

Sworn Chas. L. Egger
J. Price



Beginning at the S W Cor of ^{the NW 1/4} Section 10
which is a stone of size and shape
as may be. I laid off base line to the west
and made measurement by triangulation
of the west line of said NW 1/4 Sec 10
to establish 1/16 corner on the west line
of said NW 1/4. I also found bearing lines
run by Arnold in previous survey and
reestablished corner from his measurements
which checked with triangulation.

Cor established by me being an Iron
Bolt 3' long driven 2' 6" in the ground.
I then proceeded to the 1/16 cor on the
south line of the NW 1/4 Sec 10 and
setting a flag on the 1/16 cor on the N line of
the NW 1/4 of Sec 10. I run north on a
true line through said 1/4

1337.3 I set. Iron pin which I laid off line to
the east for base line to be used

PLAT AND RECORD OF SURVEY No. 11119

Course.	Degrees.	Minutes.	Chains.	Links.
---------	----------	----------	---------	--------

making triangulation of remainder of
distance across N. 70. 1/4 of Sec 10.

Side line 250.3 Link = $10^{\circ} 46' = 5.11681$ A

$90^{\circ} =$ 51. 13

$79^{\circ} 14' =$ 5.95240 C

Sum as Side A; Side C. = $250.3 \times L. = 1316.07 = 1327.3$

Making total distance

2658.07 and at 1/2 this distance I drove an
iron rod 3' long 2" in the ground for
a center to the N.W. 1/4 Sec 10.

C. E. Macomber
County Surveyor