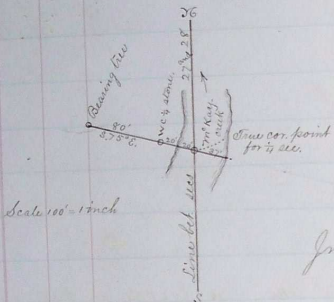


PLAT AND RECORD OF SURVEY No. 162

Request of Perry Houser March 7<sup>th</sup> 1894

Course. Degree. Minutes. Chains. Links. So locate  $\frac{1}{4}$  sec. cor. bet. secs. 27<sup>th</sup> & 28<sup>th</sup> S. 27<sup>th</sup> R. 32. E. 10<sup>th</sup> T. 2<sup>nd</sup> N.

I find bearing tree to  $\frac{1}{4}$  sec. cor. bet. secs. 27<sup>th</sup> & 28<sup>th</sup>, which is a scrubby cottonwood  
 bearing to S. 14 ins dia. mkd. in upper blaze S. 28<sup>th</sup> N. and in lower blaze B. 5, on S. E.  
 of tree. From this tree, I measure S 75° E 80 ft. and set stone 10 x 8 x 3 ins. 8 ins in ground  
 for witness cor. mkd. w c  $\frac{1}{4}$  on top and made stone mound over cor.



Jno. C. Arnold, County Surveyor