

PLAT AND RECORD OF SURVEY No. 7619

Request of W. S. Wright et al, Sept 5, 1893

To subdivide Sec. 25 T. 67 N. R. 35 E. 10. 7 M.

Smith Armstrong and Francis M. Dyer, sworn chemists; W. S. Wright and H. S. Halded sworn flagmen. Instrument a theodolite.

Commence at cor. to Secs. 23, 24, 25th & 26, as described in a survey for O. R. Baxton et al, and run on random line bet. Secs. 25th & 26. Ta. 22:36.6

South

- 50 Enter willow brush.
- 100 Spring branch 6 ft wide, course N. E.
- 200 Leaf brush
- 250 Spring brs. W. of line about 150'
- 1320 Set temp. to sec. cor.
- 1980 " " 6 1/4 " "
- 2640 " " 7/4 " " No traces of original cor.
- 2726 Stone cor, purporting to be 7/4 sec. cor, on line.
- 5367⁷ Int. C. 2nd W. line 39' East of cor. to Secs. 25, 26, 35th & 36, which is the charred end of the original post, 12 ins. in ground in center of E. 2nd W. line.

Set, over the charred end of original post, an oval shaped porous river boulder 18 ins long and 10 ins dia. mkd. 1 notch on S. and 1 notch on E.

Stake up the stone at 2726 ft. and find it to be a river boulder 14 ins long and 8 ins dia, under which I find the charred end of the original cottonwood post, over which I set a river boulder 20 ins long, 15 x 6 ins 10 ins in ground for 7/4 sec. cor. mkd. 7/4 on W. and + on top. ∴ I move temp. to sec. cor. on N. 2nd of line bet. Secs. 25th & 26 South 43 S. on true line, and set a stone 13 x 7 x 6 ins. mkd. 7/4 on W. and + on top.

East

On a random line bet. Secs. 25th & 36 Ta. 21' E.

- 1440 Branch 3' wide runs N. W.
- 1450 Center of wagon road from millen to W. W.
- 2621⁷ Int. N. 2nd E. line 83 ft. south of 7/4 sec. cor, which is the original post in stone mound. At true cor. point I set a river boulder 18 x 9 x 6 ins mkd. 7/4 on N. and + on top, and raised a mound of stone 3' base and 2' high over it.
- From this 7/4 sec. cor. I run on random line bet. Secs. 25th & 36. Ta. 22:15' E.
- 16 Leaning fence brs. N. 2nd E.
- 148 Branch 8 ft. W. runs N.
- 570 " " " " N. W.

Course	Degrees	Minutes	Chains	Links
--------	---------	---------	--------	-------

1321 Wire fence N. & S.

2632 "

2634 The SE cor. of sec. 25, which is the charred end of original post under a stone. Scolded portions of the charred end of original post, and put into the lower part of a broken 4oz. bottle, and over this, I set a smooth boulder 13x6x6 in. I marked 5 notches on N. and 1 notch on south, witness crew. J. W. Williams, Orlando's son and Erastus McQueen sworn flagman, vice W. S. Wright.

From this cor. Run on random Range line, $\text{ra } 22^{\circ} 30' \text{ E}$.

North

1325 Cor fence S. E. & W.

2640 Set temp. in sec. cor. No traces of original cor.

2647 Stone cor., claimed to have been set by J. W. Kimbrell.

3635 Enter bush.

3670 Spring branch 5 ft. wide, course N. W.

3970 Wire fence E. & W. Leave bush.

5280 Set temp. sec. cor. No traces of original cor.

5292 Stone cor., claimed to have been set by J. W. Kimbrell.

7920 Set temp. $\frac{1}{4}$ sec. cor. No traces of original cor.

9015 Creek 20' wide runs W.

9530 Foot of hill bis. N. W. & S. E. Ascend

40'

9654 Summit

40'

10280 Descend

10585 Int. E. & W. line 84 $\frac{1}{2}$ ft. W. of cor. to secs 13, 18, 19 & 24 (see P. 268)

Measuring the necessary E. & W. lines, and proportioning points for cor. to secs 19, 24, 25 & 30, and, also, $\frac{1}{4}$ sec. cor. on E. body of sec. 25. I mark these true points and erect sight poles at said points.

West

On random line bet secs. 24 & 25

 $\text{ra } 22^{\circ} 30' \text{ E}$

1190 E. bank of Sumalun river, nearly dry, course N.

1264 W.

2224 Center of old road bis about 72.5° E & 85° W .

2230 The celebrated pear tree bis R. of line or N. about 35 ft. dist.

2640 Center of rail fence on E. side of lane, course N. & S.

2672 Int. N. & S. line 47 ft. S. of $\frac{1}{4}$ sec. cor., which is a stone

PLAT AND RECORD OF SURVEY No. 1619

Deeds
Degrees Minutes
Chains
Links

15. 18.6 line mkd $\frac{1}{2}$ on N. and + on top. From this $\frac{1}{2}$ sec. cor. I measure west 2629 ft. to cor. to secs 23, 24, 25 $\frac{1}{4}$ 26 and set flag midway between said corners, to mark point for 25 sec. cor. I run straight lines connecting opposite $\frac{1}{2}$ sec. corners, about the said sec. 25 and at their intersection, I set an irregular shaped boulder, mkd $\frac{1}{2}$ on N. and + on top. This stone cor. is 11 $\frac{1}{2}$ ft. west of a cor. made by driving the rod part of a brand iron π just above the gravel surface.

Making the proper bisections, proportions and measurements, I set other stone corners, as shown by the plat of said sec. 25, given below.

Survey commenced Sep. 5 and ended Sep. 11. A. D. 1893.

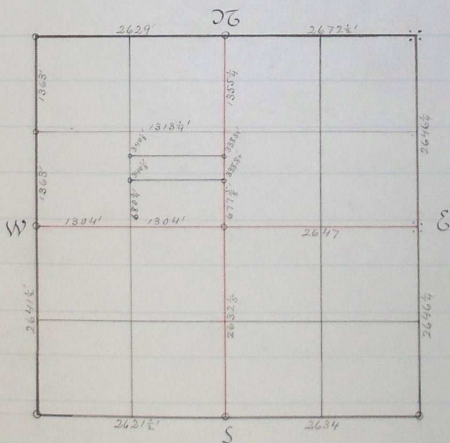
Jno. C. Arnold, County Surveyor.

Plat of sec. 25 T. 6 N. R. 35 E.

Explanations

o: stone cor.

Scale 1/320 = 1 inch



Jno. C. Arnold, County Surveyor.