

## PLAT AND RECORD OF SURVEY No. 1591

Request of Orlando Stetson, et al. May 10 1893.

To subdivide sec. 13 S. 6 T. R. 35 E.

David Hatch and Edgar R. Thomson sworn chainmen, Orlando Stetson, sworn flagman. Instrument a theodolite.

Commence at 29<sup>th</sup> mile post on line bet Oregon and Washington, which is the lower end of the original post, very rotten, in the center of an old earth mound 8 ft. dia, over which a fence runs, E<sup>3/4</sup> N.

Set, over the decayed lower end of original post, a blue ta-salt stone 22x18x14 ins. 18 ins in ground for 29<sup>th</sup> mile post, on state line, 29m on west face and + on top

500 From thence, on random state line, ra. 31° 30'

800 Descend, in W<sup>m</sup>. Haseburg's wheat field.

1070<sup>0</sup> Set temp. closing cor. to sec. 13<sup>4</sup> 18 on line bet ranges 35<sup>4</sup> 236

in traces of original closing cor.

1100 Foot of hill

1780 Center of Birch Creek, 3 ft wide, runs about N. 80° W.

2566 Cor. fences, N<sup>3/4</sup> E.

2640 Set temp  $\frac{1}{2}$  m. p. - no traces of original  $\frac{1}{2}$  m. p.

2646 Cor. fences N<sup>3/4</sup> E.

2672 A Cotton wood, 20 ins dia. old mks. - R 1 m on South side.

2736 Set flag on line, on E. bank of Sun a lum river, 3 ft E. of water edge, course about N; second flag to point on line on W. side of river, taking a base of 100 ft. on turn of 90° S. the angle is 66° 33'. the distance bet flags = 230.5 ft.; the one west is 128.5 ft. west of the W. edge of water in the river, which is therefore 102 ft. wide

2966 Flag on W. side of river.

3100 House bet. N. of line about 125 ft. dist.

3500 Ascend from bench in E. hill side.

3600 Summit.

3714<sup>0</sup> Set temp.  $\frac{1}{4}$  sec. cor. on N. bndy. sec. 13. - no traces of old cor.

5265 Int. N<sup>3/4</sup> S. line 249' N. of 28<sup>th</sup> m. p.

5900 Descend gently

6404<sup>0</sup> Int. N<sup>3/4</sup> S. line 28 ft. N. of closing cor. to sec. 13<sup>4</sup> 24

8<sup>th</sup> 14<sup>th</sup> min. called says that the stone I find here was set by J. O. Wilson of few





## PLAT AND RECORD OF SURVEY No. 7599

Ascend said stone, cut 6 notches on East on W. sides of the same, and reset it 6 ins. N. of old  $E\frac{3}{4}W$  face and 4 ft. south of the center of an old ditch course  $E\frac{3}{4}W$ .

Insert temp.  $\frac{1}{2}$  sec. cor. bet. secs. 13<sup>3</sup>/<sub>4</sub> & 24, East 7 feet, then S  $1\frac{1}{4}$  ft. and set a stone 18x6x5 ins. 16 ins. in ground for  $\frac{1}{2}$  sec. cor. mkd.  $\frac{1}{2}$  on N. face and + on top. Deposit piece broken white mug 18 ins. in ground, 5 ft. west of stone, in lane, course  $N\frac{1}{4}S$ . Insert temp.  $\frac{1}{2}$  sec. cor. on  $E\frac{3}{4}$  of line bet. secs. 13<sup>3</sup>/<sub>4</sub> & 24, East 10 $\frac{1}{2}$  ft., then S  $1\frac{3}{4}$  ft., and set a flat trowel 30x14x7 ins. 20 ins. in ground for  $\frac{1}{2}$  sec. cor. mkd.  $\frac{1}{2}$  on N. face, and + on top. Deposit piece broken white plate 18 ins. in ground 5 ft. W. of stone.

On a random line bet. fractl. secs. 13<sup>3</sup>/<sub>4</sub> & 18. Ra.  $21^{\circ}30' E$ .

1317 Fence hrs.  $E\frac{3}{4}W$ .

1320 Set temp.  $\frac{1}{2}$  sec. cor.

2620 Center of water channel 10 ft. wide, course  $N.W.$

2639 A point verified by Jas. C. Storzens, James Kuims, Philip Hoorn and others, definitely fixed and remembered by the said parties, present with J. B. Landis, M<sup>r</sup>. Newberg, Mrs. Mary A. Hardesty and W<sup>m</sup>. Hardesty, who claim also that this is the true cor. The point was fixed and remembered by the water channel above which was, originally, a ditch, and by flume lines, fences &c.

I, therefore, set at this point a basalt stone 21x10x6 ins. 15 ins. in ground for  $\frac{1}{2}$  sec. cor. mkd.  $\frac{1}{2}$  on W. face, and + on top. Deposit flat pint bottle 20 ins. in ground 5 $\frac{1}{2}$  ft. South of stone, and continue rand. line

2643 Fence hrs.  $E\frac{3}{4}W$ .

2900 Center of creek 4 ft. wide runs  $N.W.$

3050 " Birch creek 3' wide "  $N.W.$

3290 Ascend hill.

3415 Summit

3435 Int. random State line, corrected to true line at temp. closing cor. to sec. 13<sup>3</sup>/<sub>4</sub> & 18, to wit: 6404.5':28'::1070.52':4.68'. This corrected point falls at a place where it is claimed, the original cor. stood.

I, therefore, move temp. closing cor. S. 4.68 ft. and set a basalt stone 22x12x12 ins. 16 ins. in ground, for closing cor. to fractl. sec. 13<sup>3</sup>/<sub>4</sub> & 18, on line bet. ranges 35<sup>3</sup>/<sub>4</sub> & 36  $E$ . mkd.  $CC$  on S. face, 6 notches on  $E\frac{3}{4}W$

PLAT AND RECORD OF SURVEY No. 59

Course.	Degrees.	Minutes.	Chains.	Links.
---------	----------	----------	---------	--------

and 1 notch on top, on summit of ridge falling west, Dig pit E.W.  $\frac{1}{4}$  sec.  
Deposit pieces broken white plat in pit 5 ft. S. of stone, 24 ins. in ground.

Move temp. to sec. cor. on S $\frac{1}{2}$  of line bet. sec. 13<sup>3/4</sup> & 18, S. 6 ins. and  
a stone 24x12x6 ins. 18 ins. in ground for 16 sec. bet. Hardisty and Landis, mkd.  $\frac{1}{4}$   
on W. face. Deposit bits of broken white plate 18 ins. in ground 29 ft. S. of stone.

To set  $\frac{1}{4}$  sec. cor. on N. bndy. sec. 13.

$6404.5' - 1070.5' = 5334' =$  N. bndy. sec. 13.  $5334' \div 2 = 2667'$ ;  $1070.5' + 2667' = 3737.5' =$

Dist. W. of 29 m. p.;  $3737.5' - 3714.5' = 23'$  the correction west.

$6404.5' : 28' :: 3737.5' : 16.34' =$  the correction south.  $\therefore$  Move temp.  $\frac{1}{4}$  sec. cor.

west 23 ft., then S. 16.34 ft., and set a smooth basalt stone 18x8x7 ins.

ins. in ground for  $\frac{1}{4}$  sec. cor. on N. bndy. of fractl. sec. 13. mkd.  $\frac{1}{4}$  on top

and + on top. Dep. pieces of broken white plate in ground 18 ins. deep

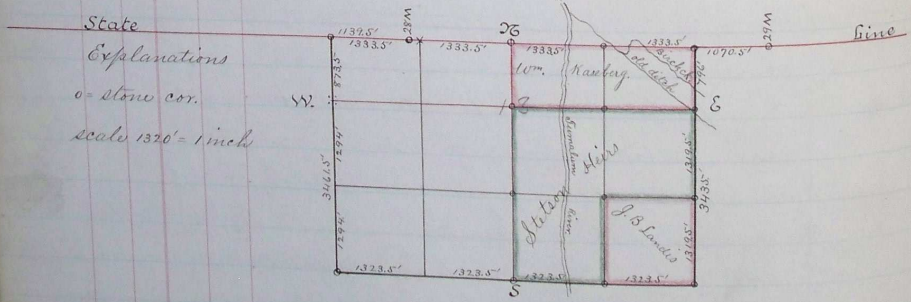
5 ft. west of stone. - At proper points I set other stone corners, as per the

accompanying plat of said sec. 13.

Survey commenced May 10. and ended May 13. A. D. 1894

Jno. C. Arnold, County Surveyor.

Plat of Sec. 13. T 6 N. R. 35 E. W. 20.



State  
Explanation  
o = stone cor.  
scale 1320' = 1 inch

Jno. C. Arnold, County Surveyor.