

Wm John Pinkerton

Sec. 27 T4N R35E

May 31<sup>st</sup> 1882

Having qualified E. Thomas Goff as chainman I assisted by H. C. Wood I proceeded in the following manner to survey at request of Mrs Jno Pinkerton, in accordance with a deed made by J W Miller & wife to John Pinkerton To Establish the NW cor of the S W 1/4 of the S E 1/4 of Sec 27 I set instrument on the S W cor of S E 1/4 of the section ground being level I obtained a through sight to the 1/4 post on the North line of the Sec and placed temp Center post at 40 chains from my initial on said through line - We then went to the 1/4 post on East line of the Sec + Run Var 21°E

West . . . . 40 17

To N + S Center line - From thence continued our course west to West line of Section failing to find 1/4 post set temp cor + proceeded to reestablish said 1/4 post To do this went to S W cor of Sec 27 + Run North at L Var 19°45'E

North . . . . 40 00

South . . . . 80 25

Set temp 1/4 post + continued on course at intersect E + W line at Goff corner. My correction for 1/4 post is North 14 links returned and made this correction Setting permanent 1/4 post at a point 85 links South of my temp cor set on E + W trap line my correction is 17 1/2 links to South for a permanent Center corner hence I returned to center of Sec + established same by setting basalt Rock 4 x 12 x 8 marked x raised mound aug trench rd. from which I obtained

## Mrs John Pinkerton Court

Course	Degrees	Minutes	Chains	Links	
North	84	xx	xx	xx	
South	01	..	20	00	Set temp 1/2 post on W line of S.E. 1/4 of Sec
South	01	..	39	72	to 1/4 post on South line of Sec 27 - this line falling short my correction for 1/2 post is 14 links to the north I returned and made this correction setting the corner 8 Rods + 14 links south of said corrected corner by agreement of J W Miller + Mrs Pinkerton the only parties interested. From which I run East
East	750				At Right Angles with N+S line + Set Post in mound from which I run <u>Var 21° E</u>
South	1261				Set post in mound from which I run along the North line of Mrs Grunlaw
West	750				To West line of S.E. 1/4 of the Section Set Post said post being the N.W. Cor of Mrs Grunlaw from which I run North along the <sup>sub</sup> line of the S.E. 1/4 of said Section 27 -
North	1261				To place of beginning said tract of land containing 9 + 9/16 Acres as per plat recorded on Page 59 -

I hereby certify that the  
above notes and plat named are correct  
as by me determined on the 31<sup>st</sup> day of May 1881

J H Raley Co Surveyor

Recorded June 4<sup>th</sup> 1881

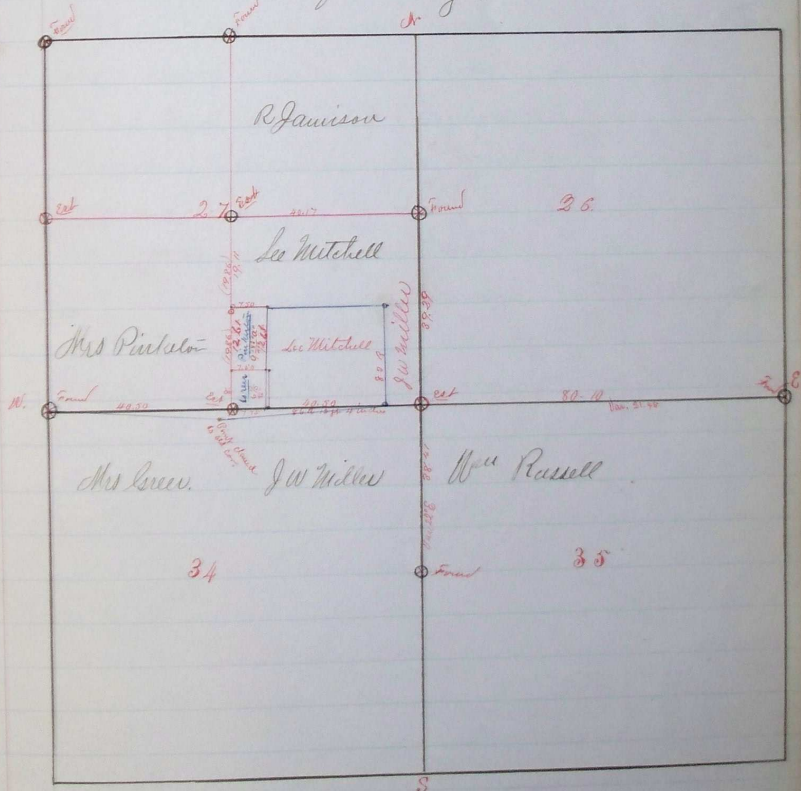
J. H. Raley Co Surveyor



PLAT AND RECORD OF SURVEY No. 1117

Course Degree: Minutes. Chains. Links.

John W Miller lease  
 at a point 30 Rods East of SW Cor of the  
 SE 1/4 of Sec from which we run East  
 a distance of 86 Rods 12 feet + 4 inches and  
 set post raised mound + dug trench from  
 which we run due north a distance of 83 Rods  
 and set stakes by request said point being  
 agreed upon as a corner between Mitchell + Miller  
 the only parties interested. Witnesses John M. Gough  
 lin. Enoch Russell + J. C. Arnold. Corners were  
 found lines run + corners established as per  
 above notes + the following plat,



Recorded June 8<sup>th</sup> 1881  
 J. W. Raley Co. Surveyors

We hereby certify that the above notes + Plat are correct  
 as by us determined May 26<sup>th</sup> + 27<sup>th</sup> 1881  
 J. W. Raley Co. Surveyors  
 J. C. Arnold, Register Oregon