

PLAT AND RECORD OF SURVEY No. 7819

Request of Tho. Ingers, Geo. Raymond, et al. Nov. 24th 1885.

Course Degree Minutes Chain Links

Subdivision of Sec. 23, 25, N. R. 34 E. for Geo. Raymond, et al.
 Assisted by Warren Raymond and Ebon B. Waterman, sworn chainmen,
 I commence at corner for Secs. 14, 15, 22 & 23 T. 5 N. R. 34 E., find original
 charred stake, and a stone by its side, in center of road in lane E & W.
 I set a basalt stone 17x4x3 1/2 ins. marked with 2 notches on E. and 3 notches
 on S corners, over charred end of original post 20 ins under surface.

Run thence South on random line bet. Secs. 22 & 23 Var. 22° E.

South 40 00 Set temp 1/4 S. cor. (Cor. Ward N & S)
 40 12 A point 6 links west of hor. charred 48 post, in crossing of road
 77 60 Int. E & W. line 188 links west of cor. for Secs 22, 23, 26 & 27

I find remnants of decayed stakes and some indications of charcoal. I find, also,
 some pieces of cast iron; B. F. Waterman, present, says he put the pieces of
 iron in the ground, about 2 years ago, when there was a plain mound and 3 pla.
 there are present B. F. Waterman, J. J. Johnson, Tho. Ingers and Geo. Raymond, all
 say this has been taken for cor. to Secs 22, 23, 26 & 27 without question; Mr.
 Waterman says he had known this corner for the last 6 years.

I set at this point, over deposits as found, a basalt stone 15x12x8 ins.
 marked 2 notches on E., and 2 notches on S corners.

Run, thence on random line bet. Secs. 23 & 26. (Raining 7/2 about 21° E.)

East 40 00 Set temp 1/4 S. cor. on W. side of ravine, course N. near its head
 81 32 Int. N & S. line 27 links S. of cor. for Secs 23, 24, 25 & 26
 Mr. H. C. Derrick verifies this cor., has known it for 20 or
 25 years; has seen the hor. post in mound with pits here; this
 cor. is well known by all early settlers. I therefore set
 a basalt stone 12x12x6 ins., marked 2 notches on S. cor. and
 1 notch on E. corner, in center of road in lane N & S.

Tuesday Nov. 24th 1885.

From cor. last described, Run on random line bet. Secs 23
 24 along center of lane N & S Var. 21° 30' E

North 40 00 Set temp 1/4 S. cor.
 79 63 Int. E & W. line 68 links East of Sec cor. I find original
 charred stake in mound on steep bluff on South side of ravine
 I set, over charred stake, a basalt stone, 19x10x10 ins., marked
 3 notches on S. cor. and 1 notch on E. cor.

Corrections & Corners

Course Degrees Minutes Chains Links

From corner last described, I run on random line bet sees 14 + 23; var. 21°30'
 West 40 00 Set temp $\frac{1}{4}$ S. cor. in center of intersection of lane course S.
 80 24 Int. N. & S. line 40 links N. of cor. for sees. 14, 15, 22 + 23.

I set over old charred stake lev. $\frac{1}{4}$ S. bet. sees 22 + 23 a basalt stone 12 x 10 x 5 ins., marked $\frac{1}{4}$ on E. face, set 20 ins under surface
 To set $\frac{1}{4}$ S. cor. on S. body, see. 23.

$81.32 \div 2 = 40.66$; $22 \div 2 = 11$; I therefore move temp $\frac{1}{4}$ S. on South body see 23, East 66 links, thence North 11 links, and set a basalt stone 11 x 8 x 3 ins., marked $\frac{1}{4}$ on N. face, in head of ravine, course North.

To set $\frac{1}{4}$ S. cor. on E. body, see. 23.

$79.63 \div 2 = 39.81$; $40 - 39.81 = .18$; $.68 \div 2 = .34$; I therefore, move temp. $\frac{1}{4}$ S. on East body, see 23, South 18 links, thence West 34 links, and set a basalt stone 13 x 10 x 6 ins., marked $\frac{1}{4}$ on E. face, and 24 ins. under surface of ground, west of ravine in angle of fencing, on west side of N. end of lane N. & S.

To set $\frac{1}{4}$ S. cor. on N. body, see. 23.

$80.24 \div 2 = 40.12$; $40 \div 2 = 20$; I therefore, move temp $\frac{1}{4}$ S. on N. body see. 23 West 12 links, thence South 20 links, and set a basalt stone 15 x 7 x 6 ins. marked $\frac{1}{4}$ on one face, in center of lane N. & S.; lane runs, thence, S.; stone 18 ins. deep.

From cor. last described, I run on random line through center see 23

South 40 00 Set temp center see. 23.
 78 66 Int. E & W. line 7 links west of true $\frac{1}{4}$ S. cor.

$78.66 : .07 :: 40. : x$ or .0357 I therefore, move temp center $3\frac{1}{2}$ lbs East to point on true line; Running from the $\frac{1}{4}$ S. cor. on West to $\frac{1}{4}$ S. cor. on East body see. 23 I find, the distance to be 81.86 chs. and the true cross lines to intersect at distances to wit: - From $\frac{1}{4}$ S. cor. on West body. 41.31 chs East
 " " " North . 39.86 " South

I set at true center point a basalt stone 11 x 8 x 6 ins. marked CS on top, and 23 on N. face, 24 ins under ground, on E. hill side, west of road in lane N. & S. A road in lane East from this corner. Thursd Nov. 26 1885.

PLAT AND RECORD OF SURVEY No. 789

Course. Degree. Minutes. Chains. Links.

Survey for Geo. Raymond, Thos. Myers, et al. concludes.

Commence at cor. for Secs. 23, 24, 25 & 26, T. 5 N. R. 34 E. and run, wa. 21.300

East

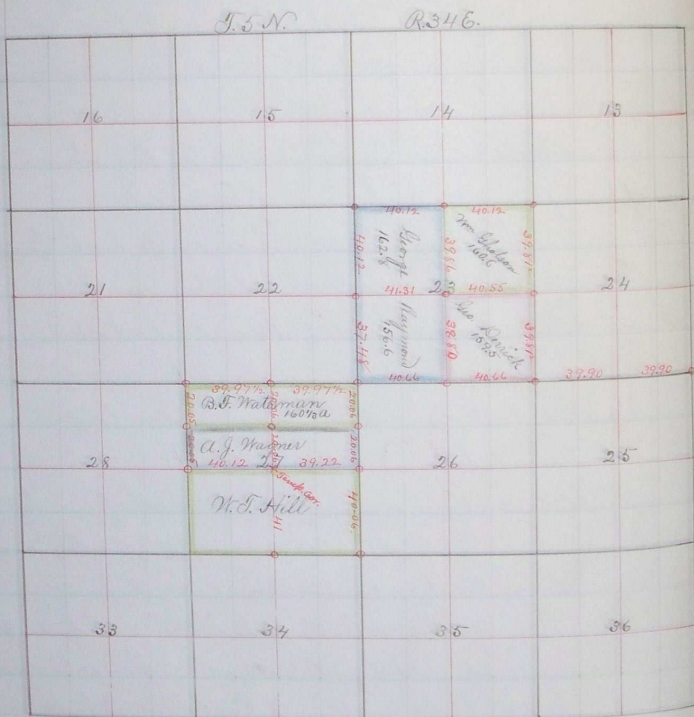
40 00 Set temp. in S. on random line bet. Secs 24 & 25.

79 80 Int. Sp. line 178 links South of cor. for Secs. 24 & 25 on Sp. line.

I find original charred stake in mound at N. end of old ditch in lane N. & S. I set over charred stake, at true point, a brass stone 12 x 8 x 8 ins. marked 2 notches on South corner.

Present, Thos. Myers, J. J. Johnson, Geo. Raymond and H. C. Derrick.

I more temp. in S. 10 links west, thence, 89 links North and left a temp. mark
Wednesday Nov. 25. 1885



Stone corners marked.

W. T. Chalk Co. Surveyor.

Per Geo. C. Arnold, Dpty.