

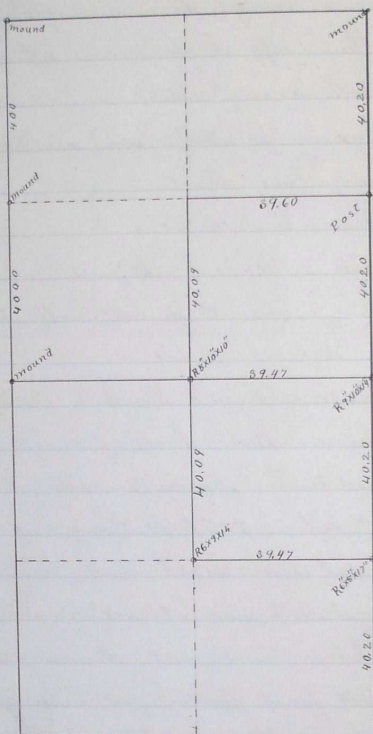
PLAT AND RECORD OF SURVEY No. PLAT

Survey for R. J. Yerhsa Mar. 12<sup>th</sup> 1885

Course. Degrees Minutes. Chains. Links.

Survey to mark off the S.E. 1/4 of sec. 21 and the N.E. 1/4 of sec. 22

To 2. N. 29 legally reestablishing corners on the East side of said sections but not strictly in a legal way reestablishing other made in the survey. Chairman G. C. Green & Smithson



Learning the old Government corners were lost on the E. side of sec. 21 I went to the quarter sec cor between sec 35 & 34 which I found well preserved and run

North

- 40 00 find no signs of sec corner
- 80 00 quarter sec post lying down but no signs of where it stood
- 120 00 sec post but no signs of corner
- 160 00 Quarter sec post but no signs of where it stood
- 201 00 N.E. corner of sec 21 well preserved. Rebuilt mound and run on true line var. 21'
- 40 20 set fence post for quarter sec. corner

South

PLAT AND RECORD OF SURVEY No. 7141

Dir.	Dege.	Min.	Chain.	Links.	
South	50	40			set rock 8x10x14" over a bottle filled with sand for south West cor of sec 21
	120	60			set rock 6x8x15" over a bottle with cross + mark on the bottom for the 1/4 S between sees 28 & 27
	160	80			set pole where SE cor of sec 28 would be
	201	00			1/4 S between sees 33 and 34 From the established cor at the N.E. cor of sec 28 I run West
East	39	47			come upon 1/4 sec stake lying down set rock here 8x10x10" over bottle with a fig 4 on the bottom of it
	78	94			Built mound & made pits. The old see post lay near Thence on a var 21 <sup>5</sup>
North	40	00			Built mound and made pits for 1/4 S
	80	00			" " " " " " " " see cor - N.W. cor of sec 21 From the quarter see cor just established bet sees 21 & 20 I run on true line
East	40	00			set temp stake
	79	20			Intersect 1/4 S bet sees 21 & 22 Thence
West	39	60			set fence post for cor at center of sec 21 From the North 1/4 part of sec 28 I run
South	40	00			set temp post - Thence on direct line to 1/4 S
East	39	32			1/4 S between sees 21 & 22 - Thence
West	39	47			set Rock 6x9x15" over a bottle at the center of sec 28

I certify the foregoing field notes and the plat are true and show the surveying done in sees 21 and 28

P. Zahner Sept 20 1892