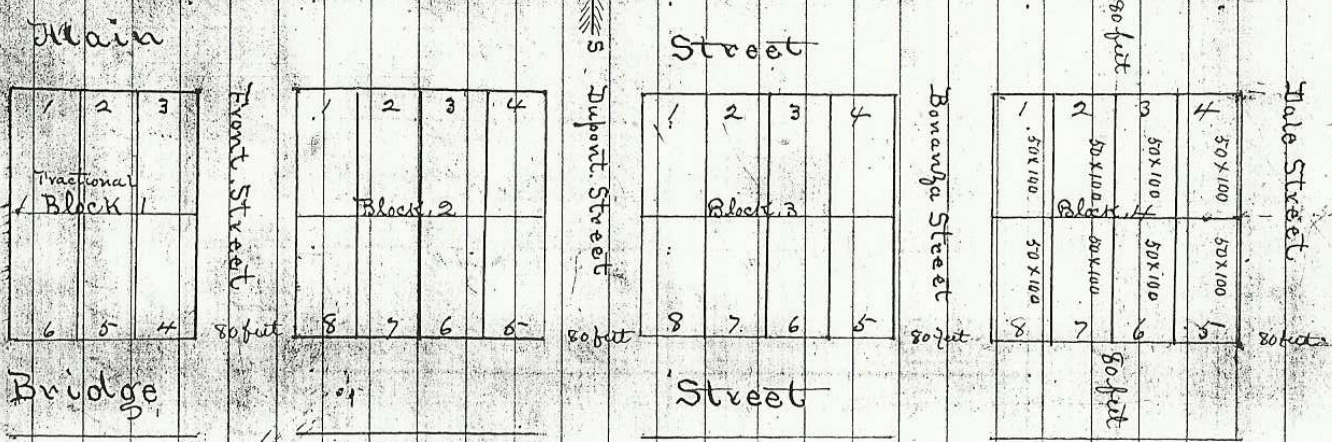


Koontz Store



ECHO CITY

Situated in the S.E. (1/4) of the N.W. (1/4) Sec. 16 town 3 N.R. 29 E. initial point at the S.E. corner of J.N. Koontz's Store Blocks 200ft square lots 50x100 ft course of Streets North and South and East and West all 80 ft surveyed Wednesday July 28th 1880
 for W.D. Brassfield + J.N. Koontz
 O.L. Moorehouse
 Surveyor

Filed and Recorded July 30th 1880
 J.A. Kinney
 County Clerk